

Lot	Description	Start Bid	Lot	Description	Start Bid
-----	-------------	-----------	-----	-------------	-----------

Friday, January 11, 2019

6:30 p.m., Lots 1-286

Coin Collections

United States

- | | | |
|----|--|-------------------------|
| 1 | Silver Accumulation
From dimes to dollars, incl. Morgan and Peace, six Whitman books containing earlier dimes to half dollars, plus 12 Walking Liberty 1 oz., fine or better Est. \$1,200/1,500 | \$1,000 |
| 2 | One Man's Collection
A variety of 20th Century coins in eight brown Dansco albums, incl. Lincoln cents, Jefferson nickels, Washington State quarters, JFK half dollars, peace dollars, Ike dollars, SBA dollars, each album in various states of completion, condition varies Est. \$500/600 | \$350 |
| 3 | 1955 to 2012 Proof Sets
Double sets from 2000 onward, mint state Est. \$500/750 | \$350 |
| 4 | Sterling Silver Medals
34 Franklin Mint Olympic medals in 2 cases, 12 grams each, also 1926-P Oregon Trail Commemorative (VF) packaged in 1993 Oregon Trail FDC, very fine Est. \$200/250 | \$120 |
| 5 | Modern Pennies Through Dollars
Mostly modern with complete set Presidential and First Lady Dollars, Kennedy half dollars along with Whitman books of quarters, dimes, earlier nickels and pennies, many rolls of modern pennies as well, a few tokens and medals in the mix, no silver but plenty of face value, fine or better Est. \$200/300 | \$100 |
| 6 | 1925 \$2½ Eagle With Watch
Attached to fob of a Dufonte pocket watch in very good condition, nice fine Est. \$150/200 | \$100 |
| 7 | Great American Landmarks Proof Set
20 gold pl. on sterling silver (.925) housed in wooden presentation box, mint state Est. \$150/200 | \$100 |
| 8 | Canada Proof Dollar Lot
44 various proof dollars in cases, all issued by Royal Canadian Mint, ranging from 1979 to 2002, slight dupl., approx. two for each year., gem proof Est. \$250/350 | \$150 |
| 9 | Canada and Foreign Accumulation
Mostly Canada incl. early pennies and modern quarters and dimes (plus around \$8 in silver), G.B., Hong Kong and other countries, plus a selection of 13 Ancient coins with a few tokens and medals added, fine or better Est. \$100/150 | \$60 |
| 10 | Currency: Ryukyus; U.S. Military Notes, Pick-72, 74, 76B etc.
11 notes, v.g. Est. \$250/350 | <i>Web</i> \$150 |

Foreign Individual Lots



- | | | |
|----|---|--------------|
| 11 | →★★ Aegean Islands: 1933, Graf Zeppelin Over Rhodes Complete, Sassone #22-27
N.h., 20L short light gum crease, fine to very fine. Scott #C20-C25 \$1,440. Sassone €2,500 Est. \$350/450 | \$200 |
| 12 | ★★ Argentina: Airpost; 1922 1p Inverted Overprint, #C22a
N.h., one short perf, well centered, fine, signed Rossi. Scott #650 (hinged), <i>scarce</i> Est. \$200/250 | \$150 |
| 13 | ★★□ Austria: 1946 Renner Sheets Complete, Michel #772B-775B <i>Web</i>
N.h., very fine. Scott #B185-B188 \$2,000. Michel €2,600 Est. \$700/800 | \$600 |



- | | | |
|----|--|--------------|
| 14 | ★★ Austria: 1946, Unissued Hitler Death Mask, Michel #VI-VII
N.h., fine to very fine. Scott #B178 vars \$2,060. Michel €1,200 Est. \$500/750 | \$300 |
|----|--|--------------|

China

- | | | |
|----|--|--------------|
| 15 | ★★□ 1897, Large Figures Wide Surcharge, 2nd Printing, 4c on 4ca, Block of 4, #50 <i>Web</i>
L.h. to o.g., good colors for this, fine to very fine. Scott #160+ Est. \$120/140 | \$100 |
| 16 | ★★★□ 1897, Large Figures Narrow Surcharge, 2nd Printing, 1c on 1ca, #66 <i>Web</i>
N.h. (2), o.g. (2), block of 4, few tone spots on reverse, fine. Scott #160+ Est. \$120/140 | \$100 |

"Web" indicates that image(s) will be found on our website, www.harmershau.com.

Lot Description Start Bid Lot Description Start Bid



17 ★★★□ 1897, Large Figures Surcharge, 1/2c on 3ca, Block of 4, #73 \$750
 N.h. (2), l.h. (2), very well centered, excellent color, immaculate and very fine. Scott \$1,100+, *scarce* Est. \$800/1,000



21 ★□ 1897, Imperial Chinese Post, \$5, Block of 4, #97 \$1,200
 Small part o.g., slight aging, centered, fine or better. Scott \$7,200+ Est. \$1,500/2,000



18 ★★★□ 1897, Large Figures Surcharge on Small Dragon, 5c on 5ca, Block of 4, #77 \$600
 Marginal, n.h. (2), l.h. (2), incl. pos. IMF 23 (rounded upper right corner), excellent centering, good color for the issue, choice very fine. China Stamp Society #73, 73c \$1,300+. Scott \$1,400 + (hinged) Est. \$700/900



22 ★ 1912, Statistical Dept. "Republic" Overprints, Complete, #146-160 \$1,100
 L.h. to o.g. (h.r.), 2c tone spot, excellent colors, a fine to very fine set. Scott \$1,643 Est. \$1,200/1,400



23 ★ 1913, Junk Issue, London Printing, Complete, #202-220 \$1,700
 O.g. (h.r.), 50c with small corner tone spot, excellent colors, a fine to very fine set. Scott \$2,831 Est. \$1,800/2,000



19 ★ 1897, Large 4c on 3c Red Revenue, #82 \$450
 Large part o.g. (h.r.), rich color, fine to very fine. Scott \$1,650 Est. \$600/800

20 ★ 1897, Large \$1 on 3c Red Revenue, #84 \$1,200
 O.g. (h.r.), small central thin, excellent color, fine or better. Scott \$9,000 Est. \$2,000/2,500



24 ★ 1923, Hall of Classics, Second Peking Printing, \$20, #269 \$1,000
 L.h., well centered, immaculate and very fine. Scott \$1,450 Est. \$1,000/1,200

Lot Description Start Bid Lot Description Start Bid



25 S **1941, Thrift Movement Sheet Overprinted Specimen, Chan #MS1 var. \$800**
 Without gum as issued, overprinted in Cyrillic, Chinese and French for the Russian Philatelic Society Exhibition in Shanghai on 28 February 1943, with "Specimen" overprint in English and Cyrillic in blue, a few light peripheral tone spots, fine to very fine. Scott #471 var. Est. \$1,200/1,400



26 P **1945, \$2 Lin Sen Die Proof, #600P \$300**
 American Bank Note sunk on card, clean, overall Very Fine. Chan #955P Est. \$400/500



27 (★) **1949, Gold Yuan, Dr. Sun Yat-Sen, Shanghai Dah Tung Engraved Printing, \$10, #887 var. \$50**
 Ungummed, printed on reverse, unusual and unlisted, very fine Est. \$100/150

28 ★ **Offices in Tibet: 1911, Surcharges on Coiling Dragon, #8, 9 (2), 10 Web \$250**
 #8 o.g. (h.r.), 9 o.g. (one edge toning, other small thin), 10 o.g. (h.r., short perfs), generally fine to very fine appearance. Scott \$2,675 Est. \$400/500



29 ★ **Offices in Tibet: 1911, Surcharge on Coiling Dragon, 1r on \$1, #10 \$170**
 Full o.g., thin, very well centered, attractive very fine appearance. China Stamp Society #TB10 \$750. Scott \$900 Est. \$200/250

Taiwan



30 (★) **1952, Silver Yuan Surcharges on Flying Geese, Complete, #1042-1045 \$600**
 Ungummed, a very fine set. Scott \$2,885 . Est. \$1,000/1,200



31 (★) **1952, Surcharges on Flying Geese, Complete, #1061-1063 \$1,000**
 Ungummed, \$10 light corner crease, well centered, very fine. Scott \$3,150 Est. \$1,200/1,500



32 (★) **1953, Chiang Kai-Shek 67th Birthday Set, #1077-1091 \$150**
 Ungummed, fine to very fine. Scott \$509 Est. \$180/220

Lot Description Start Bid Lot Description Start Bid

- 33 (★) **1953, Chiang Kai-Shek 67th Birthday Folder, #1091a** Web \$100
 Ungummed, very fine. Scott \$600 Est. \$150/200



- 34 (★) **1954, Silo Bridge Souvenir Folder, #1095a** \$300
 Ungummed, light overall toning, otherwise very fine. Scott \$2,100 Est. \$500/600

- 35 (★) **1955, Armed Forces Day Sheet, #1117a** Web \$120
 Ungummed, with tab, very fine. Scott \$700 ... Est. \$200/300

China (People's Republic)



- 36 ○ **Liberated Areas: North-West; Xinjiang; 1944, 5(f?) and 10(f?)** \$100
 Used, 5f with pale blue cds and 10f with red "X" cancel with black cds on reverse, Mizuhara #SX129-130, very fine, *unusual and scarce* Est. \$150/200

- 37 (★) **1950, Inauguration of the People's Republic Set, #31-34** Web \$110
 Ungummed, very fine. Scott \$370 Est. \$120/160

- 38 ★★ **1978 Highway Bridges, 1979 Camellias Sheets, #1452, 1540** Web \$100
 N.h., very fine to extremely fine. Scott \$540 Est. \$150/200

- 39 ★★ **1979, Great Wall and Riccione Sheets, #1483, 1492** Web \$150
 N.h., very fine to extremely fine. Scott \$740 Est. \$250/300



- 40 ★★ **1979, "Study Science From Childhood" Sheet, #1518** \$450
 N.h., fresh, very fine to extremely fine. Scott \$1,600 Est. \$600/800



- 41 ★★ **1980, Year of the Monkey, #1586** \$800
 N.h., not with the usual offset, very fine, verified. Yang #T234. Scott \$1,800 Est. \$1,000/1,200

- 42 ★★ **1980, Year of the Monkey, #1586** \$700
 N.h., very slight offset on reverse, very fine. Yang #T234. Scott \$1,800 Est. \$1,000/1,200



- 43 ☒ **Colombia: Antioquia; 5c Liberty on Laid Paper on Cover, #26a, 27a** \$2,500
 Pen cancel, 4 large margins, with 10c Berrío, to Medellín circa 1870's, backflap missing and lightly folded near bottom, still very fine, 2010 Du Vachat cert. Maury #23a, 25a *very rare* Est. \$2,750/3,000

Lot	Description	Start Bid	Lot	Description	Start Bid
44	→(★) Colombia: Airpost; 1920 "Compañía Colombia" 10c Tete-Beche Strip of 3, Sanabria #16a <i>Web</i> \$180 Ungummed, very fine, 1992 P.F. cert for strip of 4. Sanabria \$1,500 Est. \$300/400		51	★*□ Dominican Republic: 1957 Olympic Sets, #474-488, C97-105 \$50 N.h., over 500 sets in sheets incl. Airs, clean, generally fine to very fine. Scott \$7,000+ Est. \$100/150	
45	☒ Curaçao: 1843 Folded Cover to Amsterdam <i>Web</i> \$120 With large red stamp 'Postery Curaçao' with coat of arms, sent to Amsterdam "11-10-1843", ZEE-BRIFF and Amsterdam receiver, fine to very fine, <i>Ex Vadheim collection rare</i> Est. \$200/250				
46	☒ Curaçao: 1922 Incoming Mail Cover <i>Web</i> \$60 From British Virgin Islands, with 6d (#63) registered Tortola-Virgin Islands 11-11-1922 to St. Eustatius-D.W.I. "28-11 50", part back flap missing, fine to very fine, <i>Ex Vadheim collection</i> .SG #98 Est. \$100/150		52	→☒ Estonia: 1933 3rd South America Flight Cover, Michel #305 \$240 To Recife with 2 adhesives on postcard, a very fine cover. Sieger #294 Est. \$300/400	
47	(★)□ Czechoslovakia: 1934 Music Sheets, Michel #330x-331x <i>Web</i> \$350 Ungummed, with folder (slight soiling), very fine. Scott #200a-201a \$1,200+. Michel €950+ Est. \$400/400				
48	(★)□ Czechoslovakia: 1934 Music Sheet, 2k, Michel #331X <i>Web</i> \$200 Ungummed, 2 with folder, one lightly toned, small stain on folder, signed, otherwise fine to very fine. Scott #201a \$1,200. Michel €1,500 Est. \$220/250		53	★ Fernando Poo: 1894 10c Alfonso XIII, Edifil #16 \$180 Full o.g. (h.r.), very well centered, excellent color, very fine. Scott #17 \$450. Edifil €415 Est. \$200/250	
				France	
49	☒ Czechoslovakia: Legion Post in Siberia; 1918 Cover \$200 Franked with Russia 1r imperf with irregular margins all round tied by military handstamp to Chicago with violet 2nd wireless station ms. and seal on reverse, tear on front only, scarce, fine to very fine Est. \$250/350				
			54	★□ 1849, Ceres, 20c Black on Dark Buff, Left Margin Block of 4, Maury #3c \$1,250 O.g., margins good to large, fine to very fine, signed Roumet. Scott #3b var. Yvert #3b. Maury €9,500 Est. \$1,300/1,500	
50	☒ Denmark: 1851, 2rs Blue, 1st (Ferslew) Printing on Small Folded Letter, Facit #1 I \$1,600 4 large margins, tied by black target and blue 23/8/54 oval, domestic usage, internal reinforcement, very fine, 2018 Roumet cert. Scott #1 \$2,200. Facit SKr 18,000 Est. \$1,750/1,900				

The live auction will be conducted through "Redpoint".
Contact us for details.

Lot Description Start Bid Lot Description Start Bid



- 55 **1849, Ceres, 20c Gray on Folded Letter, Maury #3i** \$500
 Margins large to just touching, from Lyon to St Etienne, tied by diamond grid cancel, accompanied by 1849 cds, a fine cover, 2016 Roumet cert. Scott #3 var. Yvert #3 var. Maury €3,750 Est. \$550/650



- 59 **1867, Napoleon III Laureate, 10c Bister, Bisect on Folded Letter, Maury #28 var.** \$1,200
 Tied by numerical lozenge cancel, with 1870 20c, 17 Oct. 1871 cds, horizontal fold far from adhesives, otherwise clean, very fine, 2017 Roumet cert. Scott #32c \$3,750. Yvert #28 var. Maury €6,000 Est. \$1,250/1,350



- 56 **1853, Napoleon III Imperforate, 25c Blue on Bluish, Block of 4, Maury #15** \$700
 Left margin block, grid cancel, large to just clear margins, crease upper left corner, lower right copy tiny thin, otherwise fine to very fine, signed Baudot. Scott #17 \$2,150. Yvert #15. Maury €3,400 Est. \$750/850



- 60 **1869, Napoleon III Laureate, 5fr Gray Lilac on Cover, Maury #33** \$750
 Tied by star cancel, upper left corner added, with 1870 40c, 1871 30c and 1871 80c (3), one 80c value damaged, 25 Feb. 1873 Paris postmark, 26 Feb. 1873 Ganat backstamp, dealer handstamp, fine. Scott #37 \$1,450. Yvert #33. Maury €1,000 (off cover) Est. \$800/1,000



- 57 **1853, Napoleon III Imperforate, 1fr Lake on Yellowish, Maury #18** \$350
 Lozenge cancel, nice margins all round, dealer handstamp on back, 2 small thins, very fine appearance, signed Roumet. Scott #21 \$2,475. Yvert #18. Maury €4,000 Est. \$400/450

- 61 **1870, Bordeaux, 1c to 80c Collection, Maury #39/49** *Web* \$2,500
 About 80 on homemade pages in French, vast majority used with 4 margins, identified by report number, missing better 20c type I, generally fine to very fine. Scott #38/48. Yvert #39 Est. \$2,700/3,000

- 58 **1853, Napoleon III Imperforate, 1fr Lake, Tête-Bêche Pair, Maury #18F** \$450
 Nice margins all round, square grid cancel, nice example of his work, pressed light horizontal crease, attractive very fine appearance. Scott #21. Yvert #18 Est. \$550/600

We are now accepting consignments for the August 2019 APS auction.

Lot Description Start Bid Lot Description Start Bid



62 (★) **1870, Bordeaux, 5c Yellow Green on Greenish, Maury #42 I** \$700
 Unused, report 1, 4 ample to large margins, very fine, signed Calves, 2010 Gautre and 1976 R.P.S.L. certs. Scott #41 var. Yvert #42. Maury €1,875 Est. \$750/850



66 →★★□ **1936, 10fr Airmail South Atlantic Crossing, Maury #321** \$1,000
 N.h., dated block of 4, folded along left column of vertical perfs, very fine, 2018 Roumet cert. Scott #C17 \$2,800+. Yvert #321. Maury €3,800 Est. \$1,100/1,200



63 ★ **1917, 5fr+5fr Semi-Postal, War Orphans, Maury #155** \$250
 L.h., well centered and very fine. Scott #B10 \$1,600. Yvert #155. Maury €2,000 Est. \$400/600



67 →★★□ **Airmail, 1930, 1.50fr Bright Ultramarine, Maury #6ba** \$1,000
 N.h., dated block of 4, very fine, 2018 Roumet cert. Scott #C6a var. Yvert #6a. Maury €3,900 Est. \$1,100/1,200



64 ★★□ **1931, 20fr Pont Du Gard, Perf 13, Maury #262 IIB** \$900
 N.h., dated block of 4, horizontal perfs separated in lower left selvage, otherwise very fine, 2018 Roumet cert. Scott #254A \$1,800+. Yvert #262. Maury €3,150 Est. \$950/1,000



68 →★★ **Airmail, 1930, 1.50fr Deep Carmine, "E.I.P.A." Perfins, Maury #6d** \$425
 N.h., very fine, 2016 P.F. cert. Scott #C5a \$3,600. Maury €5,000 Est. \$700/900



65 ★□ **1931, 20fr Pont Du Gard, Perf 13, Maury #262 IIB** \$650
 O.g., corner block of 4, folded along vertical perfs between left and right pairs, fine to very fine, 2018 Roumet cert. Scott #254A \$1,800. Yvert #262. Maury €2,400 .. Est. \$700/750



69 →★★ **Airmail, 1936, 50fr "Banknote", Maury #15** \$600
 N.h., very l.h. in selvage only, fine to very fine, signed Calves, 2018 Roumet cert. Scott #C15 \$1,700+. Yvert #15. Maury €1,700+ Est. \$650/700

Lot Description Start Bid Lot Description Start Bid



70 **✈★** **Airmail, 1936, 50fr "Banknote", Maury #15 \$2,400**
 N.h., dated block of 4, very fine. Scott #C15 \$6,800+. Yvert #15. Maury €8,700 as 4 n.h. singles
 Est. \$2,500/2,800

71 **★** **Offices in Alexandria: 1899-1900, Surcharge Set, Maury #1-18 Web \$220**
 O.g. to large part o.g., incl. type varieties of 5c, 10c and 50c, Maury #5, 17 no gum, all fresh, fine to very fine. Scott #1-15, 5a, 6a, 12a \$730. Yvert #1-18. Maury €860
 Est. \$250/300



72 **★** **Offices in Mongtseu: 1906 Surcharges Complete, Maury #17-33 \$180**
 L.h. to o.g., excellent colors, fine to very fine. Scott #16-32 \$606. Yvert #17-33. Maury €715 Est. \$200/250

73 **★** **Offices in Mongtseu: 1908 Surcharges Complete, Maury #34-50 Web \$100**
 Mostly l.h. to o.g. (few part o.g.), fresh set, fine to very fine. Scott #33-50 \$335. Yvert #34A-50. Maury €400
 Est. \$120/140



74 **★** **Offices in Port Said: Postage Due 1921, 30m on 50c Red Violet, Maury #8 \$1,000**
 Full o.g., fresh, fine to very fine and rare, signed Brun, 2018 P.F. cert. Scott #J4 \$3,000. Yvert #4. Maury €3,850
 Est. \$1,200/1,400

75 **★** **Offices in Vathy: 1893-1900 Surcharges, Maury #1/11 Web \$140**
 Incl. 5c yellow green, type II, 10c type II, l.h. to part o.g., fine to very fine. Scott #1-9, 2a, 3a \$452. Yvert #1/11. Maury €520 Est. \$160/180



76 **✈★** **French Equatorial Africa: 1940 Airpost 2.50fr, Inverted Overprint, Maury #10c \$150**
 N.h., very fine, similar copy from block realized \$253 in January 2018 auction, signed Brun. Scott #C10b \$400. Maury €475
 Est. \$200/250



77 **★** **French Morocco: 1891-1900 Surcharged Complete, Maury #1, 2a, 3-6, 9-13 \$350**
 L.h. to o.g., incl. 5c on 5c type II, 10c on 10c type II with dramatic shift, 50c type I, fine to very fine, scarcer 50c signed Calves, 2fr signed. Scott #1-8, 2a, 3a, 6a \$1,071+. Yvert #1-8, etc. Maury €1,200 Est. \$400/500

Germany



78 **○** **1933 Nothilfe Souvenir Sheet, Michel #Block 2 \$800**
 "5.2.35" Berlin cancels, "edge light blotchy" (small spot below stamps), 200x140mm (slightly reduced), otherwise very fine, 2017 Schlegel cert. Scott #B58 \$10,500. Michel €12,000 Est. \$1,200/1,500

79 **✉** **1933, 2m Chicago Zeppelin Cover, Michel #497 Web \$60**
 Along with two definitives on cachet South America, tied by Oct. 14, Friedrichshafen cancel to N.J., a very fine cover. Scott #C44 \$275. Michel €350 Est. \$100/150

Lot Description Start Bid Lot Description Start Bid



80 ★ **Offices in China: 1900, Foochow Provisional Surcharge on 56° Overprint, 5pf on 10pf, Michel #7 II** \$120
L.h., fine, 2000 Ellis cert and two signatures. Scott #16 \$800. Michel €1,000 Est. \$200/300

81 ○ **Offices in China: 1900, Tientsin Provisional Overprint, 3pf, Michel #8** \$150
"Tientsin 31/1 01" cds, well centered, very fine, signed Richter, 2018 Jäschke-Lantelme cert. Scott #17 \$800. Michel €1,000 Est. \$250/300

82 ○ **Offices in China: 1900, Tientsin Provisional Overprint, 10pf, Michel #10** \$150
"Tientsin 1 1 01" cds, fine to very fine, signed Freyse and Thier, 1980 Raband and 2018 Jäschke-Lantelme certs. Scott #19 \$875. Michel €1,100 Est. \$250/300



83 ○ **Offices in China: 1900, Tientsin Provisional Overprint, 20pf, Michel #11** \$150
K.D. FELDPOSTEXPED.) / DES / OSTASIA-TISCHE(N) / EXPEDITIONSCORPS (a)/11/2 cds, fine to very fine, signed Freyse, 2018 Jäschke-Lantelme cert. Scott #20 \$950+. Michel €1,200+ Est. \$250/350

84 ★ **Offices in Morocco: 1900, 6p25c on 5m, Type II, Michel #19 II** \$200
L.h., almost very fine, signed Pfenninger, 2000 Ellis cert. Scott #19A \$1,500. Michel €2,000 Est. \$300/400



85 ★ **Kiauchau: 1905, \$1 Blue, Michel #25B** \$120
O.g., marginal copy, excellent centering, extremely fine. Scott #30a \$375+. Michel €450+ Est. \$140/160



86 ★ **Kiauchau: 1905, \$1½ Black Violet, Michel #26** \$150
L.h., deep color and impression, very fine, 2000 Ellis cert. Scott #31 \$1,200. Michel €1,400 Est. \$250/350

87 ★ **Kiauchau: 1905, \$2½ Slate & Carmine, Michel #27A** \$180
L.h., good color, very fine, signed Buhler, 2000 Ellis cert. Scott #32 \$1,500. Michel €1,800 Est. \$300/500



88 ★ **Danzig: 1920, 60pf Magenta With Overprint, Michel #47** \$150
L.h., fresh, very fine and choice, signed Dr. Dub, 2006 Ellis cert. Scott #44 \$1,200. Michel €1,400 Est. \$250/350

89 ★ **Danzig: 1920, 1m With Overprint, Michel #48** \$150
O.g., marginal example, lovely fine appearance, signed Engel etc., 2005 Ellis cert. Scott #47 \$1,200. Michel €1,400 Est. \$250/350



90 ★ **Danzig: 1920, 2m With Overprint, Michel #49** \$250
Very l.h. marginal copy, fresh, fine to very fine, signed Buhler, Dub, Holtz. Scott #48 \$1,200+. Michel €1,400+ Est. \$300/400

91 ★ **Danzig: 1920, 2m With Overprint, Michel #49** \$150
L.h., fine and fresh, signed Engel etc., 2005 Ellis cert. Scott #48 \$1,200. Michel €1,400 Est. \$250/350

Lot Description Start Bid Lot Description Start Bid

92 ★□ **WWII Occupation: Belgium; 1943 Flemish Legion Sheets, Michel #V-VIII** *Web* \$120
 O.g., miniature sheets of 4, one with offset on reverse, fine to very fine. Michel €1,200 Est. \$200/250



98 ○ **Saar: 1948, Flood Sheet, Michel #Block 1** \$600
 Used with n.h. gum, fault free example, extremely fine, 2018 Geigle cert. Scott #B64a \$2,750+. Michel €3,400 Est. \$800/1,000

93 →★ **WWII Occupation: Montenegro; 1943, 10L Overprint Airmail, Michel #19** \$300
 L.h., very fine and choice, 2005 Ellis cert. Scott #3NC5 \$1,575. Michel €4,200 *rare* Est. \$500/750

94 ★ **WWII Occupation: Pleskau (Pskow); 1941-1942 Issues, Michel #1-12** \$180
 O.g., #2-9 signed CJK (#1) Dr. Dub, fine to very fine, 2005 Ellis cert (#3 and 4). Michel €1,570 Est. \$300/350

99 ○ **Greenland: Parcel Post; 1905-1937 1ö-20ö Values** *Web* \$170
 Perf 11½, oval cancels, overall very fine. Scott #Q1-3, 4b, 5-6 \$577 Est. \$200/240

95 ★★ **WWII Propaganda: India; 1943 Azad Hind, Michel #1A-XA** *Web* \$120
 O.g. to n.h., complete with some light dupl., of note #VIIBa (n.h. top margin single), fine to very fine. Michel €1,190 Est. \$200/250



100 ☒ **Haiti: 1784 Incoming Ship Letter** \$150
 Folded letter from "St. Nicolow Imale", docketed sept. 20, 1784, from Capt. "Joseph West / Capt. Hall" to Thomas Wifwell (?), mentioning "I left Boston the 1 Aug and arrived at the Cape the third of Sept...", usual aging, scarce, *São Nicolau is one of the Barlavento islands of Cape Verde, Ex. Friedman "Cover Corner" Stock transcribed in full* Est. \$250/350

96 ○ **Berlin: 1949 Currency Victims Sheet, Michel #Block 1** \$250
 18.12.49 Berlin Expo cancel, fine to very fine. Scott #9NB3a \$1,500. Michel €2,200 Est. \$400/500

101 E **Iceland: 1930 Parliament 45aur Ludwig Essay** *Web* \$60
 On card in brown & gray-black, very fine and attractive Est. \$100/150



97 ★★ **Saar: 1947 Printing 1 Overprint Set, Michel #226ZI-238ZI** \$350
 N.h., minor gum disturbance on 20f, fine to very fine, signed Dub. Scott #175a-187a \$2,800. Michel €3,500 Est. \$600/700

102 →★★ **Iceland: 1930, Parliament Millennium Complete, Facit #189-193** \$60
 N.h., small tone spot (C7), otherwise choice very fine. Scott #C4-C8 \$510. Facit SKr 3,900 Est. \$100/150

<i>Lot</i>	<i>Description</i>	<i>Start Bid</i>	<i>Lot</i>	<i>Description</i>	<i>Start Bid</i>
------------	--------------------	------------------	------------	--------------------	------------------

- 103 →★□ **Iceland: 1930, Parliament Millennium Complete, Facit #189-193** *Web* **\$240**
 N.h., blocks of 4, very fine. Scott #C4-C8 \$2,040. Facit SKr 15,600 Est. \$400/600



Italy & States



- 104 ○ **Napoli: 1860 1/2t Blue, Sassone #16** **\$1,500**
 4 large to very large margins, boxed cancel, extremely fine, signed Roumet, 2018 Roumet cert. Scott #9 \$3,250. Sassone €6,000 Est. \$1,600/1,800
- 105 ★○ **Two Sicilies: 1859 Ferdinand II Accumulation, Sassone #1/12** *Web* **\$1,000**
 O.g. or used, 25 items incl. 3 pairs, from 1/2g to 10g value, few shades present, margins vary from touching to full, mostly fine to very fine. Scott #10/16 Est. \$1,100/1,200
- 106 ○ **Tuscany: 1851-1852 Used Group, Sassone #1, 4, 5, 6, 8** *Web* **\$250**
 11 items (one unused), some dupl., interesting group, fine or better. Scott #1, 4, 5, 6, 8 Est. \$400/600
- 107 ☒ **1951, 5L-15L Gymnastics Issue FD Cover, Sassone #661-663** *Web* **\$150**
 Along with #544, all tied to cachet cover, very slight toning, otherwise fine to very fine. Scott #574-576 \$1,500 for singles. Sassone €2,750 Est. \$250/300



- 108 ★ **1961 205L Rose Lilac, Sassone #S201a** **\$200**
 L.h., very fine. Scott #834a \$1,500 (n.h.). Sassone €850 Est. \$250/300
- 109 ★★□ **2004, 45c Venus of Urbina, Missing Value (Black), Sassone #2370Aa** *Web* **\$650**
 Complete pane of 100, n.h., folded in half, very fine, an astonishing variety without denomination., very fine, photocopy of 2016 Dr. Avi cert. Scott #2447 var. Sassone €45,000 Est. \$650/850
- 110 ★★ **Parcel Post: 1953 40L-110L Complete, Sassone #1-4** *Web* **\$60**
 N.h., fine to very fine. Scott #QY1-QY4 \$400. Sassone €525 Est. \$100/150

- 111 ★★ **Parcel Post: 1946-54, 25c-1000L Complete, Sassone #66-81** **\$450**
 N.h., 50L light vertical crease, otherwise fine to very fine. Scott #Q61-Q76 \$5,000. Sassone €6,675 .. Est. \$750/1,000



- 112 ★★ **Japan: 1949, Occupational Series, 100y Blast Furnace, #435** **\$120**
 N.h., tiny inclusion, otherwise fine to very fine. Scott \$600 Est. \$200/250
- 113 ★ **Korea: 1900, Imperial Symbols Issue Complete, Perf 11, #18-33** **\$400**
 O.g. (few h.r.), 20ch light crease, few usual ragged perfs or small tone spots below 50ch values, otherwise almost very fine. Scott \$3,230 Est. \$600/800



- 114 ★★□ **Korea: 1957, 29h Blue Watermark, Block of 4, #211** **\$1,600**
 N.h., corner block, usual gum bends, excellent color, very fine. Scott \$5,400+ Est. \$2,000/2,500
- 115 →○ **Lebanon: 1928, Airmail 2p, 3p, 5p and 10p Overprints, Sanabria #41-44** *Web* **\$90**
 Beyrouth cds, overprinted bi-lingually in green "AVION" and red airplane with "République Libanaise" and bars over "Grand Liban", fine to very fine, 2009 Sismondo cert. Sanabria \$850 Est. \$150/200

Lot Description Start Bid Lot Description Start Bid



116 ○ **Liechtenstein: 1935, 5fr Coat of Arms, Michel #142** \$150
 Partial cds, very fine. Scott #131 \$1,050. Zumstein #121. Michel €1,300 Est. \$250/300



120 ○ **Mexico: 1872, Hidalgo Imperf, 50c Yellow, #84** \$250
 Partial cds, 3 ample margins with one close, fine to very fine. Scott #850 Est. \$300/350



121 ○ **Mexico: 1872, Hidalgo Imperf, 100c Gray Lilac, #86** \$200
 Partial cds, 4 ample margins, fine to very fine. Scott #650 Est. \$230/260



117 ✉ **Lithuania: 1932 4th South America Zeppelin Flight, Sieger #241** \$250
 To Recife with 4 adhesives, very clean, a very fine cover Est. \$300/400



122 ✉ **Portugal: 1866, King Luiz, 120r Blue on Folded Letter, Afinsa #26** \$500
 Tied by barred ovals and 21 June 1871 cds, with 1871 10r and 1870 20r, to Italy, some perf tip toning on low values, some separations along folds and part of letter missing, fine. Scott #24 Est. \$550/600

118 ✉ **Manchuria: 1932 Japan and Manchuria Flight Service Postcard** Web \$100
 First flight franked with Japan 1/2s and 6s tied by Tokyo 3.11.32 cds along with red cachet flight cancel which reads "Commemorating Airmail Service Connecting Japan and Manchukuo", sent to Long Beach, CA, small tape adherence on address side, very fine, *picture postcard depicts the airplane used* Est. \$150/200

119 ✉ **Manchuria: 1937 Dairen Cover to U.S.** Web \$70
 Official registered diplomatic cover American Consular Service registered to American Secretary of State in Washington, franked with Japanese adhesives during Occupation of (Chinese) Manchuria in 1937, backstamped Washington, November 14, slight toned areas on cover and seal removed from back, otherwise, fine to very fine, *from personal collection of Franklin Roosevelt and sold at auction in 1946* Est. \$100/150



123 ★ **Russia: 1922 1k Semi-Postal Overprint, Michel #185B** \$60
 O.g., 4 full margins, very fine, signed twice on reverse. Scott #B29 \$425. Michel €1,000 n.h. Est. \$100/150

Lot Description Start Bid Lot Description Start Bid



- 124 **Russia: 1931 Leningrad Zeppelin Flight, Michel #402-405A** **\$500**
Complete set perf'd, tied by Leningrad cds with special handstamp and registered, a very fine cover, 1993 Sieger cert. Scott #C30-33. Sieger #204Ac Est. \$750/900
- 125 **Russia: 1949 Lenin Souvenir Sheets, Michel #11A-B** *Web* **\$250**
O.g., perf and imperf, both slightly reduced, fresh colors, fine. Scott #1327a \$1,575 (n.h.). Michel €2,750 (n.h.) Est. \$350/450
- 126 **Spain: 1929 4p Deep Rose Accumulation, Edifil #445** **\$600**
N.h., over 500 examples in singles and blocks, generally off center, otherwise mostly fine. Scott #356 \$26,000+. Edifil €38,480 Est. \$1,000/1,500



- 127 **Spain: 1938 Airmail, 5p on 1p U.S. Constitution, Edifil #765** **\$160**
N.h., well centered, very fine. Scott #C97 \$500. Edifil €790 Est. \$200/250



- 128 **Switzerland: Geneva; 1851, "Neuchâtel", 5c Black & Red, Michel #3** **\$1,500**
4 medium to full margins, on piece, grill cancel, 22 Nov. 1851 cds, fine to very fine, 2013 S.B.P.V. and 1948 Fulpus certs. Scott #2L7 \$4,150. Zumstein #11. Michel €3,800 Est. \$1,600/1,800

- 129 **Switzerland: 1914, Rütli, 5fr Deep Ultramarine, Block of 4, Michel #122** *Web* **\$110**
Perfectly centered, extremely fine, 2018 Rellstab cert (no photo image). Scott #183 \$210 + (hinged). Zumstein #130. Michel €640+ Est. \$140/180



- 130 **Switzerland: Officials; War Board of Trade, 1918, Set Complete, Michel #11-81** **\$200**
N.h., fine to very fine. Scott #101-108 \$822 as o.g. Zumstein #1-8. Michel €1,700 Est. \$300/400
- 131 **Tannu Tuva: 1938 Pictorial Changed Colors, Michel #123-127** *Web* **\$200**
N.h., excellent colors, very fine to extremely fine, 2001 Sismondo cert. Scott #99-103 \$500 Est. \$230/260

- 132 **Tibet: 1914 Pharijong Registered Cover** *Web* **\$150**
Franked by India 3ps (2) and 2a6ps tied by Pharijong F.P.O. No. 81 dated 12 MY 14 cds, along with registration label, sent to Birmingham, England, neat, clean cover, fine to very fine, a very scarce usage Est. \$250/300

- 133 **Tunisia: 1916-1918, 10c on 15c-15c on 5fr Complete, Cérés #49-67** *Web* **\$60**
O.g., fine to very fine. Scott #B3-B19 \$626. Cérés €810 Est. \$100/150

- 134 **Uruguay: Airpost, 1939-44 Set, #C93/105** **\$300**
Used in quantities (mostly blocks) to 10p (166 copies at cat. \$65 each = cat. \$10,800), higher quantities in lower "P" values, mostly Fine to Very Fine Est. \$500/750

Vatican

- 135 **1933 Palace 25c, Sassone #23c-e** *Web* **\$130**
N.h., l.h. (#23d), and used, very fine, 2 signed. Scott #23 var. Sassone €1,320 Est. \$200/250



- 136 **1934, Provisional Surcharges Complete, Sassone #35-40** **\$200**
Used, fine to very fine, 2003 A.P.S. certs for top 2 values. Scott #35-40 \$1,478. Sassone €2,000 Est. \$300/400

Lot	Description	Start Bid	Lot	Description	Start Bid
					
137 ★★	1935, Juridical Congress Complete, Sassone #41-46 \$160 N.h., 3 with selvedge, fresh, fine to very fine, signed Vespermann. Scott #41-46 \$1,045. Sassone €1,200 Est. \$200/250		143 ★	1862, QV, 3d, Emblems Watermark, SG #77 \$300 O.g. (h.r.), fine. Scott #37 \$2,500. SG £2,700 Est. \$500/600	
138 ★★★	1945 Medaglioncini Issue Varieties, Sassone #91h, 92f, 92g, 93f, 94d, 97d, 98d Web \$300 7 diff., consisting of imperf between variety pairs (2 l.h.), others n.h., generally fine to very fine. Sassone €3,000 Est. \$400/500		144 ★★	1874, QV, 6d, Spray of Rose Watermark, SG #147 \$120 N.h. (l.h. in selvage), plate 17, top pl. #3546, nice appearance, vertical crease at top, otherwise fine. Scott #62 \$1,000 for hinged. SG £950 for hinged Est. \$200/250	
139 ★★	Postage Due: 1945 Five Values With Varieties, Sassone #7f, 10f, 11d, Etc. Web \$150 N.h., incl. 5c, 1L imperf at left and right, 1L horiz. strip of 3 imperf vertical at right and two right copies, 2L imperf at bottom, very fine Est. \$250/350				

Commonwealth Individual Lots

Great Britain

140 ★	Essays: 1839 Hermes Head Essays Web \$100 Example of bottom two consisting of concentric circles "engine turning" from sheet #1 submitted, excellent examples, very fine, <i>Treasury competition for suitable labels and wrappers</i> Est. \$150/200
141 ☒	Mulreadys: 1840, Letter Sheet, 1d, SG #ME1 Web \$100 Red Maltese Cross with July 8 backstamp, sent out by "the envelope select advertiser" with 29 classified ad size advertisements, incl. ads for insurance, tea, patent, medicines, etc., some reinforcing of the folds on the inside front, a little grubby, vertical fold and edge tears, just fine. Scott #U3 \$500+. SG £825 Est. \$140/180



142 ☒	1840, 2d, Strip of 3 on Cover, SG #5 \$600 Clear to large margins to touching at right copy, fine to very fine, tied to folded letter (folded in half - mostly separated), to Warwick with black Maltese cancels and 21 AU 1843 arrivals and transit on reverse, 1987 P.F. cert. Scott #2 \$3,250 + (off cover). SG £3,100 + (pair, single) Est. \$750/1,000
-------	---

145 ○	1884, QV, £1, Imperial Crowns Watermark, SG #185 \$180 Partial multiple cds, faint diagonal crease, fine. Scott #110 \$3,000. SG £2,800 Est. \$300/400
146 ○	1888, QV, £1, Orbs Watermark, SG #186 \$240 Indistinct cancel, a sound example, fine. Scott #123 \$4,400. SG £4,250 Est. \$400/600



147 ○	1913, GV "Seahorse", Waterlow Printing, £1 Green, SG #403 \$160 Partial cds, fine. Scott #176 \$1,400. SG £1,400 . Est. \$250/300
-------	--



Lot Description Start Bid Lot Description Start Bid



148 ★★ 1918-19, GV "Seahorses", Bradbury, Wilkinson Printing Set, SG #413a/17 \$100
 N.h., marginal examples, very fine. Scott #179-181 \$725+. SG £990+ Est. \$150/200



149 ★★ 1929, £1 P.U.C., SG #438 \$200
 N.h., fine to very fine. Scott #209 \$1,100. SG £750 for hinged Est. \$350/450



150 ★★□ Postage Dues: 1936-37, 1/2d to 2/6 Complete, SG #D19/26 \$180
 N.h., in blocks of 4 with few marginal, almost very fine. Scott #J18-J25 \$1,719. SG £1,800 Est. \$300/350



151 ★★□ Postage Dues: 1937, 2/6, SG #D26 \$300
 L.h. (2), n.h. (5), bottom margin arrow block of 8, very fine. Scott #J25 \$2,600. SG £2,800 Est. \$500/600

Australia & States



152 ★ Tasmania: Postal-Fiscal, 1900, QV, £1, "Revenue" Overprint, SG #F39 \$100
 L.h., nice color, very fine. Scott #AR35 \$375. SG £275 Est. \$100/130



153 ★ 1913, Kangaroo & Map, 1/-, Watermark Inverted, SG #11w \$450
 O.g. (h.r.), excellent color, fine to very fine. Scott #10c \$1,150. SG £1,500 Est. \$450/550



154 ○ 1931-36 Kangaroos, 5/- To £2, SG #135/38 \$150
 Used, 5/- and £1 short creases, fine to very fine. Scott #126-129 \$1,295. SG £1,045 Est. \$250/300



155 P 1932 1/- Lyrebird Brown Red Printer's Sample, ACSC #145PP(1)A \$100
 N.h., fresh, very fine to extremely fine. ACSC \$600 Est. \$150/200



156 ★★ 1932, 5/- Sydney Bridge, SG #143 \$200
 N.h., very fine. Scott #132 \$1,600. SG £425 for hinged Est. \$325/375

157 ★★ 1932, 5/- Sydney Bridge, SG #143 \$180
 N.h., vertical gum crease and small tone spot on reverse, otherwise fine to very fine. Scott #132 \$1,600. SG £425 for hinged Est. \$300/350

- 158 ○ **1932, 5/- Sydney Bridge, SG #143** *Web* \$60
 Used, fine to very fine. Scott #132 \$350. SG £200
 Est. \$100/150
- 159 ☒ **1940, 1941 Censor Covers to Shanghai** *Web* \$60
 Two covers from Melbourne, Y.M.C.A. cancelled 21 SEP 1940; other Ship Mail Room Melbourne, 11 SE 41, both with "Opened by Censor" tape and Shanghai receivers, fine to very fine Est. \$100/150



- 160 ★ **New Guinea: 1915, Kangaroo & Map, £1, SG #85** \$100
 O.g. (h.r.), very fine. Scott #10 \$600. SG £550
 Est. \$180/230
- 161 ★ **Bechuanaland: 1888, QV, £1 Lilac & Black, SG #20** \$150
 L.h., lovely example, very fine, signed Brun. Scott #21 \$1,100. SG £900 Est. \$250/300



- 162 ★★ **Bermuda: 1973 15c, Brown Omitted, SG #294a** \$900
 N.h., normal for comparison, very fine, 2011 A.P.S. cert. Scott #299a \$2,250 *scarce* Est. \$1,000/1,400
- 163 ☒ **Biafra: 1967 (Aug. 21) 4d Postage Paid Cover** *Web* \$100
 Franked with violet boxed 'BIAFRA / 4d / POSTAGE PAID' handstamp, with Owerri cds to Barclays Bank in Port Harcourt, a scarce commercial usage, fine to very fine, *both located in Eastern Nigeria which was part of the breakaway province of Biafra* Est. \$150/200

- 164 ★★☐ **British Honduras: 1938, GVI, Set Complete, Block of 4, SG #150/61** *Web* \$120
 N.h., one \$1 light gum crease, fine to very fine. Scott #115-126 \$700. SG £760 Est. \$180/220



- 165 ★ **Burma: 1937 25r Overprint, SG #18** \$270
 O.g., pencil notations on reverse, centered, fresh, very fine. Scott #18 \$750. SG £600 Est. \$400/500

Canadian Provinces



- 166 ○ **New Brunswick: 1851, 6d Olive Yellow, #2** \$450
 Light green oval cancel, nice to large margins all round, fabulous color, almost extremely fine, 1976 Royal cert. SG #4. Scott \$1,200 Est. \$500/600

Newfoundland



- 167 ★★ **1857, 8d Scarlet Vermilion, #8** \$300
 N.h., 4 nice to large margins, very fine to extremely fine, 2017 Greene cert. Scott \$400 as o.g. Est. \$500/600
- 168 ★ **1876, 5c Blue, Rouletted, #40** \$110
 O.g. (h.r.), nicely centered, very fine and choice, signed Brun. Scott \$275 Est. \$130/160

"Web" indicates that image(s) will be found on our website, www.harmershau.com.

Lot Description Start Bid Lot Description Start Bid



169 P 1897 Discovery of Newfoundland Set, Proofs, #61-74P \$250 On card, excellent margins, extremely fine. Unitrade C\$775 Est. \$300/400



170 ** Airmail: 1933, \$4.50 on 75c Balbo Flight, #C18 \$130 N.h., extremely fine. Scott \$500 Est. \$200/250



171 ** Airmail: 1933, \$4.50 on 75c Balbo Flight, #C18 \$120 N.h., very fine. Scott \$500 Est. \$180/220

172 ** Airmail: 1933, \$4.50 on 75c Balbo Flight, #C18 \$100 N.h., fine to very fine. Scott \$500 Est. \$150/200

Canada



173 ★ 1893, 50c Deep Blue, #47 \$120 L.h., pencil note on gum, great color and centering, very fine to extremely fine. Scott \$425 Est. \$200/250

1897 Victoria Jubilee Issue



174 ** 10c Brown Violet, #57 \$120 N.h., Grade 85 very fine to extremely fine, 2018 P.S.E. cert. SMQ \$500 Est. \$200/250



175 ** 15c Steel Blue, #58 \$300 N.h., Grade 90 extremely fine, 2018 P.S.E. cert. SMQ \$1,150 Est. \$450/550



176 ★ 50c Ultramarine, #60 \$300 Slightly disturbed o.g., right selvage, Grade 95 extremely fine to superb, 2018 P.S.E. cert. SMQ \$1,200 Est. \$450/550

177 ** 50c Ultramarine, #60 \$120 N.h., bottom selvage, very fine, 2018 P.S.E. and 2016 Greene certs. Scott \$775+ Est. \$200/250



178 ★ \$1 Lake, #61 \$425 O.g., Grade 90 extremely fine, 2018 P.S.E. cert. SMQ \$1,750 Est. \$700/850

179 ○ \$1 Lake, #61 \$100 Clear Montreal cds, fine to very fine. Scott \$700 Est. \$150/200

The live auction will be conducted through "Redpoint". Contact us for details.

Lot Description Start Bid Lot Description Start Bid



180 ★ **\$2 Dark Purple, #62** **\$250**
 "Slightly disturbed o.g.", strong color, couple of short perfs, nicely centered, very fine, 2018 P.S.E. cert. Scott \$1,400 Est. \$400/500

181 ★ **\$2 Dark Purple, #62** **\$250**
 L.h., "nibbed perf at the top left", also missed perf at left, well centered, Grade 80 very fine, 2018 P.S.E. cert. Scott \$1,400 Est. \$400/500



182 ★★ **\$3 Yellow Bistre, #63** **\$600**
 N.h., left marginal, well centered, "short natural gum wrinkle at top left" (pretty tough in our opinion), extremely fine to superb appearance, 2018 P.S.E. and 2014 (sound) Greene certs. Scott \$4,000 Est. \$1,000/1,200



183 ★★ **\$3 Yellow Bistre, #63** **\$300**
 N.h., "short crease at top right and reperfed at right" according to PSE, extremely fine appearance, 2018 P.S.E. and 2010 Greene (sound!) certs. Scott \$4,000 Est. \$500/600

184 ★ **\$3 Yellow Bistre, #63** **\$150**
 O.g., "small hinge thin", otherwise fine to very fine, 2018 P.S.E. cert. Scott \$1,400 Est. \$250/300



185 ★★ **\$4 Purple, #64** **\$500**
 N.h., left margin large copy, "light vertical crease", otherwise fine to very fine, 2018 P.S.E. cert. Scott \$4,000 Est. \$800/1,000

186 ★ **\$5 Olive Green, #65** **\$180**
 O.g., "tiny perf tear at lower left", otherwise very fine, 2018 P.S.E. cert. Scott \$1,400 Est. \$300/350



187 ★★ **1897, 5c Dark Blue, #70** **\$120**
 N.h., Grade 85 very fine to extremely fine, 2018 P.S.E. cert. Unitrade C\$475 Est. \$200/250

188 ★★ **1897, 6c Brown, #71** **\$80**
 N.h., very fine, 2005 Gratton cert. Scott \$350 . Est. \$120/150



189 ★ **1897, 8c Orange, #72** **\$250**
 "Slightly disturbed o.g.", huge copy, Grade 95 extremely fine to superb, 2018 P.S.E. cert. SMQ \$1,100 Est. \$400/500

190 ★★ **1897, 8c Orange, Unitrade #72ii** **\$200**
 N.h., horizontal wove paper, few irregular perfs, excellent centering, Grade 80 very fine, 2018 P.S.E. and 2013 Greene certs. Scott #72 var. Unitrade C\$850 Est. \$325/400

191 ★★□ **1899, 2c on 3c, Top Plate Block of 8, #87** **\$100** *Web*
 L.h. in selvage, stamps n.h. (pair with minor vertical gum streak), pl. #6, nicely centered, very fine. Scott \$360 as singles Est. \$150/200

1911-1925 King George V "Admiral" Issue

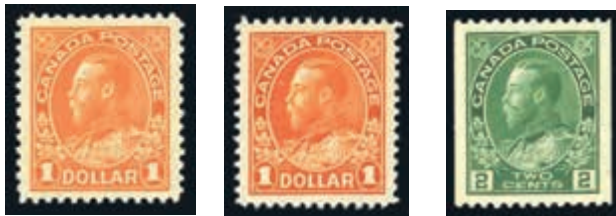
192 ★★□ **2c, Dry Printing, Block of 4, #107e** **\$100** *Web*
 N.h., very fine to extremely fine, 2015 Greene cert. Scott \$220+ Est. \$150/200

193 ★★□ **7c, Wet Printing, Block of 4, #114b** **\$100** *Web*
 N.h., strong color, very fine, 2015 Greene cert. Scott \$320+ Est. \$150/200

Lot Description Start Bid Lot Description Start Bid



- 194 ★★ **10¢, Dry Printing, #117a** \$100
N.h., Grade 95 extremely fine to superb, 2018 P.S.E. cert. SMQ \$375 Est. \$150/180
- 195 ★★ **10¢, Dry Printing, #117a** \$90
N.h., excellent copy, Grade 95 extremely fine to superb, 2018 P.S.E. cert. SMQ \$375 (for #117) Est. \$130/160
- 196 ★★ **50¢ Black Brown, #120** \$80
N.h., Grade 90 extremely fine, 2018 P.S.E. cert. SMQ \$350 Est. \$140/180



- 197 ★★ **\$1 Orange, #122** \$100
N.h., Grade 90 extremely fine, 2017 P.S.E. cert. SMQ \$425 Est. \$150/200
- 198 ★ **\$1 Orange, #122** \$70
O.g., Grade 95 extremely fine to superb, 2018 P.S.E. cert. SMQ \$300 Est. \$120/150
- 199 ★★ **1924, 2¢ Coil, #133** \$300
N.h., Grade 100 a superb gem, 2018 P.S.E. cert. SMQ \$575 for 95 Est. \$500/750
- 200 ☒ **1924 Imperf 1¢ and 3¢ Covers, #136, 138** Web \$60
Two franked with 3¢ rate, 1¢ (3) and 3¢, all jumbos showing portions of adjacent adhesives all around, extremely fine covers Est. \$100/150



- 201 ★★ **1929, \$1 Parliament, #159** \$200
N.h., Grade 85 very fine to extremely fine, 2018 P.S.E. cert. SMQ \$750 Est. \$300/375
- 202 ★★ **1930, 50¢ Grand Pré, #176** \$80
N.h., very fine, 2018 P.S.E. cert. Scott \$350 ... Est. \$140/170



- 203 ★★☐ **1930, \$1 Mt. Cavell, #177** \$400
N.h., pl. #1 block of 4, gum bends, fine to very fine. Scott \$3,000 Est. \$600/800
- 204 P **1935, Silver Jubilee Complete, Proofs, #211-216P** Web \$120
On card, excellent margins, extremely fine. Scott \$575, 400 possible sets Est. \$150/200



- 205 P **1935, GV Pictorials Set, Proofs, #217-227P** \$450
Plate proofs on card, excellent margins, extremely fine. Unitrade C\$1,800, 400 possible sets Est. \$500/700
- 206 ★★ **1935, 3¢, Printed on the Gum Side, #219c** \$100
N.h., selvage copy, light crease tone spot in top perf, well centered, attractive very fine appearance. Scott \$600+ Est. \$150/200



- 207 ↗★★ **Airmail: 1932, 6¢ on 5¢, Without Surcharge, #C3d** \$250
O.g., in pair with normal, very fine, 1977 A.P.S. cert. Scott \$950 Est. \$375/450

Lot Description Start Bid Lot Description Start Bid



- 208 ★ **Cayman Islands: 1932 Assembly Centenary Set, SG #84/95** \$100
O.g. (h.r.), fine to very fine. Scott #69-80 \$564. SG £500 Est. \$150/200
- 209 ★ **Cayman Islands: 1932 Assembly Centenary Set, SG #84/95** \$100
O.g. (some h.r.), fine to very fine. Scott #69-80 \$564. SG £500 Est. \$150/200

Ceylon



- 210 (★) **1857, QV, 1d Deep Turquoise Blue, Imperf, SG #2** \$100
Unused, 3 margins to just touching, deep color, light horizontal crease, fine. Scott #3 \$1,150. SG £1,100 Est. \$150/200
- 211 (★) **1857, QV, 2d Yellowish Green, Imperf, SG #3a** \$60
Unused, 4 nice margins, "toned", attractive very fine appearance, 1992 B.P.A. cert (incorrect S.G. number). Scott #4a \$575. SG £500 Est. \$100/150
- 212 (★) **1857, QV, 5d Chestnut, Imperf, SG #5** \$250
Unused, 4 close margins, fine. Scott #6 \$1,750. SG £1,600 Est. \$400/450



- 213 ○ **1859, QV, 6d Brown, Imperf, SG #6a** \$60
Faint bar cancel, 3½ margin example, fine. Scott #7 \$575. SG £550 Est. \$100/150
- 214 (★) **1857, QV, 1/9 Green, Imperf, SG #11** \$120
Unused, close to ample margins, deep color, fine to very fine, signed A. Diena. Scott #12 \$950. SG £800 Est. \$200/250



- 215 ★ **1861, QV, 1/9 Light Green, Rough Perf 14 to 15½, Prepared For Use But Not Issued, SG #36** \$60
O.g. (h.r.), small horizontal tear at left, otherwise fine to very fine appearance. Scott #35 \$825. SG £750 Est. \$100/150
- 216 ★ **1861, QV, 2/- Deep Dull Blue, Rough Perf 14 to 15½, SG #37a** \$130
O.g. (h.r.), rich color, perfs cut at bottom, just fine. Scott #36a \$1,100. SG £1,100 Est. \$200/250
- 217 (★) **1862, QV, 9d Brown, Perf 13, SG #42** \$170
Unused, good color, usual centering fine, 1950 and 2007 R.P.S.L. certs. Scott #42 \$1,400. SG £1,300 Est. \$250/350



- 218 ★ **1885, QV, 10c on 64c Red Brown, SG #164** \$60
Small part o.g. dist., fine, 1999 B.P.A. cert. Scott #104 \$475. SG £450 Est. \$100/150
- 219 (★) **1885, QV, 5c on 32c Slate, Perf 14 x 12½, SG #172** \$100
Unused, very fine. Scott #112 \$900. SG £850 Est. \$150/200
- 220 ★ **1885, QV, 5c on 64c Red Brown, Perf 14 x 12½, SG #173** \$120
Part o.g. (large h.r.), fine. Scott #113 \$975. SG £950 Est. \$200/250



- 221 ★ **1924, GV, 50r Dull Purple, SG #358** \$200
L.h., very fine. Scott #245 \$825. SG £800 Est. \$250/300

Lot Description Start Bid Lot Description Start Bid



222 ★★ Cook Islands: 1920 1d, Inverted Center, SG #71 var. \$1,600
Marginal, n.h. (top), o.g. (bottom), bottom hinged with pencil notation on reverse stating pos. on sheet, fine. Scott #62a \$3,500 (hinged). SG £3,400 + (hinged) Est. \$1,800/2,000

223 ★□ Cook Islands: Aitutaki; 1920 3d, Imperf at Bottom, Block of 4, SG #27 var. Web \$80
N.h., bottom block, fine to very fine. Scott #31 var. *unusual* Est. \$100/150



224 ★ Cyprus: 1881, QV, 6pi, CC Watermark, SG #15 \$350
O.g., well centered, pencil notations on back, otherwise fine to very fine. Scott #15 \$1,900. SG £1,800 Est. \$550/650

225 ★ Cyprus: 1882, QV, 1/2 on 1/2pi, CC Watermark, SG #23 \$130
O.g. (h.r.), small pencil notation on back, fine to very fine. Scott #16 \$750. SG £700 Est. \$220/270



226 ★ Cyprus: 1902-04, Edward VII Set, CA Watermark, SG #50/9 \$140
L.h. to o.g. (h.r.), black line on 1pi, generally fine to very fine, signed Senf. Scott #38-47 \$791. SG £600 Est. \$230/280

227 ★ Cyprus: 1923, GV, £1, SG #101 \$250
O.g. (h.r.), very fine and attractive. Scott #88 \$1,400. SG £1,400 Est. \$400/500



228 ★★ Falkland Islands: 1928, South Georgia Provisional, 2 1/2d on 2d, SG #115 \$400
N.h., bottom margin, fine+, signed three times. Scott #52 \$1,300 for hinged. SG £1,300 for hinged Est. \$450/550

229 ☒ Falkland Islands: 1952 Flown Cover to England, SG #172-185 Web \$70
With 'FIRST OVERSEAS AIRMAIL' cancels on complete GVI pictorial set dated 29 April 1952, registered from Port Stanley, no arrival cancel, horizontal file fold which does not affect adhesives, fine to very fine. Scott #107-120 Est. \$100/150



230 ★ Gold Coast: 1921, GV, £2, SG #102 \$100
L.h., fine to very fine. Scott #95 \$550. SG £550 . Est. \$150/200

231 ★ Hong Kong: 1946, 30c, \$1 Victory, Extra Stroke, SG #169-170a Web \$60
L.h., very fine. Scott #174-175 var. SG £250 . Est. \$100/130

232 ★☒ India: Bamra; Postal Stationery; 1889 1/2a Postal Card, 1891 1/2a Envelope, Higgins and Gage #2, B3 \$150
1/2a on greenish blue, packs of 100 in original bundles, clean, Ex. Friedman "Cover Corner" Stock Est. \$200/250

233 ★☒ India: Indore; Postal Cards; 1894 1/4a, Higgins and Gage #1 \$50
On yellow brown, pack of 100 in original bundle, clean, Ex. Friedman "Cover Corner" Stock Est. \$100/150



234 ○ Jamaica: 1900, Llandoverly Falls, 1d Watermark Sideways Inverted and Reversed, SG #32y \$60
Used, very fine. Scott #32 var. Est. \$100/150

Lot Description Start Bid Lot Description Start Bid



235 ★★ Kenya: Revenue; 1950, 1/- Purple & Vermillion, Perf 13, Barefoot #2a \$200
N.h., Kodi Poll Tax, fresh, very fine. Barefoot £150 for used
..... Est. \$250/300



240 ★ Straits Settlements: Postal-Fiscal, 1938, \$25 Purple & Blue, SG #F1 \$150
O.g. (h.r.), natural debris flaw below right \$25, good color
fine to very fine. Scott #AR1 \$1,450. SG £1,400
..... Est. \$200/250



241 ★✉ Perak: Postal Cards; 1887 1c, 1893 1c, Higgins and Gage #1-2 \$60
Mint in two packs of 50 each, clean, Ex. Friedman "Cover
Corner" Stock Est. \$100/150



236 ○ Leeward Islands: 1942, GVI, 6d, Ordinary Paper, Broken "E", SG #109ab \$70
Used, pl 4, pos 1, well centered, very fine. Scott #110 var.
SG £400 Est. \$100/140



237 ★★ Leeward Islands: 1942, GVI, 1/-, "D I" Flaw, SG #110a \$60
N.h. (1st issue normal toned gum), corner pl. # row 1 copy,
less pronounced "D" flaw "chamfered", fine to very fine.
Scott #111 var. SG £650 Est. \$100/150

242 S Selangor: 1935-1937 Set Perforated Specimen, SG #68S/85S Web \$100
O.g. (some h.r.), generally fine to very fine. Scott #45-59
var. SG £500 Est. \$150/200

243 ★ Trengganu: 1938 \$5, SG #44 \$200
Full o.g., rich color, fine to very fine. Scott #38 \$500. SG
£500 Est. \$230/270

New Zealand



244 ○ 1855, QV "Chalon Head", 2d Dull Blue on Blued Paper, SG #2 \$150
Used, 4 clear to large margins, extremely fine, 1987
Holcombe cert. Scott #2 \$750. SG £650 Est. \$250/300



245 ○ 1855, QV "Chalon Head", 1d Red on Blue Paper, SG #4 \$240
Face free bar cancel, 4 margins, "small central thin spot",
otherwise attractive very fine appearance, 2018 Odenweller
cert. Scott #4 \$2,200. Campbell Paterson #A1c(2). SG
£2,000 Est. \$400/500



246 (★) 1858, QV "Chalon Head", 1d Dull Orange, Imperf, SG #8 \$400
Unused, 3½ margins with 1 margin showing adjacent
adhesive, fine, 2018 Odenweller cert. Scott #7 \$4,000.
Campbell Paterson #A1d(1). SG £3,500 Est. \$700/800







Malayan States



238 ★ Straits Settlements: 1923, GV, \$25 Purple & Blue, SG #240b \$400
L.h., fine to very fine, signed A. Diena. Scott #202 \$1,450.
SG £1,400 Est. \$500/700

239 ★★ Straits Settlements: 1937-41 Mint Accumulation, SG #278/282 Web \$200
N.h., two stockcards of many multiples from 1c to 6c, vast
majority are 2c (59), also 1c (5), 4c (3), 5c (21), 6c (8), fine to
very fine. Scott #238/242. SG £2,000 (Owner's)
..... Est. \$300/400

We are now accepting consignments for the August 2019 APS auction.

Lot	Description	Start Bid	Lot	Description	Start Bid
					
247 (★)	1857, QV "Chalon Head", 2d Blue, Imperf, SG #10 \$160 Unused, 2½ to cutting margins, fine, 2018 Odenweller cert. Scott #8 \$1,450. Campbell Paterson #A2c(8). SG £1,300 Est. \$250/300		253 (★)	1862, QV "Chalon Head", 6d Red Brown, Imperf, SG #43 \$180 Regummed, 3 margins to just in at bottom right, good color, fine, 2018 Odenweller cert. Scott #14 \$1,700. Campbell Paterson #A5b(4). SG £1,600 Est. \$300/350	
248 ○	1857, QV "Chalon Head", 6d Pale Brown, Imperf, SG #14 \$60 Oval barred cancel, 4 margin example, very fine, 1995 Holcombe cert. Scott #9h \$325. SG £300 Est. \$100/150		254 ○	1867, QV "Chalon Head", 3d Lilac, Imperf, SG #117a \$200 Light cancel, clear to huge margins, very fine to extremely fine. Scott #33b \$2,000 as pair. SG £2,000 as pair Est. \$300/400	
					
249 (★)	1862, QV "Chalon Head", 1d Vermilion, Imperf, SG #34 \$160 Unused, 4 margins, lovely color, choice very fine, 2018 Odenweller cert. Scott #11e \$800. Campbell Paterson #A1c(3). SG £750 Est. \$250/300		255 (★)	1864, QV "Chalon Head", 6d Brown, Provisional Imperf, Pair, SG #122b \$250 Regummed, 4 margins, fine to very fine, 2018 Odenweller cert. Scott #36b \$3,000 for pair. Campbell Paterson #A5h(V). SG £3,000 for pair Est. \$400/600	
250 (★)	1862, QV "Chalon Head", 1d Carmine Vermilion, Imperf, SG #35 \$60 Regummed, 2½ margins to close and just in, nice color, fine, 2018 Odenweller cert. Scott #11d \$475. Campbell Paterson #A1e(4). SG £450 Est. \$100/150		256 ○	1871, QV "Chalon Head", 6d Blue, Perf 10 x 12½, SG #131a \$60 Oval bar cancel, fine, 1969 R.P.S.L. cert. Scott #44 \$575. SG £550 Est. \$100/150	
					
251 (★)	1862, QV "Chalon Head", 3d Brown Lilac, Imperf, SG #40 \$100 Regummed, 4 margins, "facial blemish" and small corner crease (not mentioned), fine, signed two signatures, 2018 Odenweller cert. Scott #13 \$750. Campbell Paterson #A3d(2). SG £600 Est. \$150/200		257 ★	1898 Pictorials, ½d-5/- Complete, SG #246/59 \$150 O.g. (some h.r.), fine to very fine. Scott #70-83 \$1,266. SG £850 Est. \$250/300	
252 (★)	1862, QV "Chalon Head", 6d Black Brown, Imperf, SG #41 \$180 Unused, 3 margins to close at top, "some minor surface disturbances", fine, 2018 Odenweller cert. Scott #14d \$2,000. Campbell Paterson #A5b(1). SG £1,900 Est. \$300/400		258 ★★□	1907 1½d With Major Re-entry, SG #318a \$150 N.h., corner control block showing major re-entry Row #2, pos. 12 and lesser re-entry row 1, #11, minor perf seps., excellent color, very fine, 2009 Odenweller cert. Scott #109 var. Campbell Paterson #EV4f. SG £350 + (hinged) Est. \$200/250	

Lot Description Start Bid Lot Description Start Bid



259 ★□ **1902, Pembroke Peak, 2d Purple, Perf 14, Imperf Horizontally, SG #319ac** **\$150**
 O.g., block of 4, scissor cut at top, horizontal fold between pairs, fine. Scott #110c \$775. SG £800 Est. \$250/300

260 ★★ **1906 Christchurch Exhibition Complete, SG #370/3** *Web* **\$80**
 N.h., top two values marginal, fine to very fine set. Scott #122-125 \$335 for hinged. SG £275 for hinged Est. \$140/180

261 ○ **1906 Christchurch Exhibition Complete, SG #370/3** *Web* **\$60**
 Used, small thin on ½p, otherwise fine to very fine set. Scott #122-125 \$605. SG £375 Est. \$100/140



262 ★★ **1913 Auckland Exhibition Complete, SG #412/15** **\$100**
 N.h., a fine set. Scott #130e-137e \$610 for hinged. SG £300 for hinged Est. \$150/200

263 ○ **1913 Auckland Exhibition Complete, SG #412/15** **\$120**
 Used, shorter perfs on 6p, otherwise fine to very fine. Scott #130e-137e \$1,000. SG £600 Est. \$200/250



264 ★★ **1980 14c Strip of 3, Black Omitted, Campbell Paterson #SP260-SP262(Z)** **\$100**
 N.h., very fine to extremely fine. Scott #701-703 var. Campbell Paterson \$500 Est. \$150/200



265 ★★ **1996, 40c + 5c Error Self Adhesive, #B155** **\$300**
 N.h., very fine. Campbell Paterson #T69aZ. Scott \$1,750, rare, 500 examples sold in error Est. \$500/700



266 ★★★ **Postal Fiscal: 1903-15, 2/- to £2, SG #F90/F123** **\$800**
 O.g. (some h.r.) to n.h., good colors, 15/- pulled perf top right corner, generally fine to very fine. Scott #AR32-AR45 \$6,785 Est. \$1,300/1,500

267 ★★ **Postal-Fiscal: 1935, £3 10/- Rose, SG #F165** **\$280**
 N.h., fine. Scott #AR66 \$2,250 for hinged. SG £2,250 for hinged Est. \$600/800



268 ★★★□ **Postage Dues: 1899, ½d-2/- Complete, SG #D1/16** **\$400**
 O.g. (h.r.) to n.h., blocks of 4 (3 with gutter blocks), fine to very fine. Scott #J1-J11 \$3,452. SG £1,860 ... Est. \$650/750

Lot Description Start Bid Lot Description Start Bid



269 ★ **Officials: 1892, QV "Side Face", 1d Overprint O.P.S.O. in Violet, SG #O6 \$120**
 O.g. (h.r.), nice color, small crease, otherwise fine. Scott #O6 \$1,000 Est. \$200/250

270 ★ **Officials: 1911-14, 2/- to £1 Complete, SG #O82/84 \$200**
 O.g. (£1 h.r.), good colors, fine to very fine. Scott #O38-O40 \$1,200. SG £750 Est. \$350/400

271 ★ **Officials: 1913 £1 Rose Carmine, SG #O84 \$120**
 L.h., decent example, fresh, fine to very fine. Scott #O40 \$1,000. SG £650 Est. \$200/250



272 ○□ **Officials: 1913, £1 Rose Carmine, SG #O84 \$300**
 Wellington. N.Z. roller cancel, block of 4, fine to very fine. Scott #O40 \$2,500. SG £2,200 Est. \$500/600



273 ★★ **Locals: 1908, 1d, Royle Plate, Overprinted "King Edward VII Land", SG #A1 \$100**
 N.h., fresh, fine. Scott #121a \$475 for hinged. SG £475 for hinged Est. \$150/200

274 ★★□ **Locals: 1911, Victoria Land Overprint, 1d, Block of 4, SG #A3 Web \$120**
 N.h., broken left on upper right copy, fine to very fine. Scott #131d \$280 as o.g. SG £220 as o.g. Est. \$180/220

275 ★✉ **North Borneo: Postal Cards; 1889 Set, Higgins and Gage #3-4 \$60**
 Mint in two packs of 50 each, clean, Ex. Friedman "Cover Corner" Stock Est. \$100/150

276 ★★□ **North Borneo: 1918 Red Cross, 1c+2c - 24c+2c, Full Sheets, SG #224/226 Web \$2,000**
 N.h., panes of 100, few minor perf separations, otherwise fine to very fine. Scott #B14-B24 \$11,170 hinged. SG £11,070 hinged Est. \$2,000/2,200



277 ★ **Nyasaland: British Central Africa; 1891, "B.C.A." on Rhodesia £1, SG #14 \$250**
 O.g., fine. Scott #14 \$1,300. SG £1,300 Est. \$400/500

278 ✉ **Pitcairn Islands: 1924 Cachet IV Variety to U.K. Cover, SG #C4 var. Web \$100**
 To Francis Field, Sutton Coldfield England, no other markings, cachet in large black letters, sold "as is", very fine, Ex Vadheim collection Est. \$150/200



279 →★★ **Sierra Leone: Airmail, 1963, 11sh on £1, SG #269 \$100**
 N.h., very fine. Scott #C7 \$700. SG £750 Est. \$150/200

280 →★★ **Sierra Leone: Airmail, 1963, 11sh on £1, SG #269 \$100**
 N.h., fine to very fine. Scott #C7 \$700. SG £750 Est. \$150/200



281 →★★ **Sierra Leone: Airmail, 1963, 11sh on £1, SG #269 \$100**
 N.h., tiny tone spot on reverse, fine to very fine. Scott #C7 \$700. SG £750 Est. \$150/200

Lot Description Start Bid Lot Description Start Bid

282 ★ **Somaliland Protectorate: 1903, "British Somaliland" at Bottom on India Set, SG #18/24** *Web* **\$110**
 L.h., fresh, fine to very fine. Scott #14-20 \$438. SG £436
 Est. \$150/200



285 ★ **Zanzibar: 1909, Sultan Ali Bin Hamoud, 1c-30r, SG #225-241** **\$750**
 O.g. (10r, 20r slightly toned gum), otherwise fine to very fine. Scott #99-115 \$2,063. SG £1,950 Est. \$800/1,000

283 ★★ **Somaliland Protectorate: 1903, "British Somal.Land" at Bottom on India 1r, SG #21c** **\$200**
 N.h., in pair with normal, fine. Scott #16e \$500 (hinged). SG £500 (hinged) Est. \$250/300



286 ★ **Zanzibar: 1908, View of Port & Sultan's Palace, 30r, SG #241** **\$300**
 O.g., excellent color, very fine. Scott #115 \$775. SG £750
 Est. \$350/400

284 ★ **South Africa: Zululand; 1892, "Zululand" on G.B. 5/-, SG #11** **\$120**
 L.h., fine to very fine. Scott #11 \$700. SG £700
 Est. \$200/250

End of First Session

NEW! Remote Lot Viewing Via Easy Video Conference

 **FaceTime Lot Viewing**
 You can review requested lots via FaceTime on your iPhone, iPad or Mac computer.

Android Lot Viewing
 There are a couple of options when using an Android smart phone:

-  • Download the Google Duo App to be able to video conference for lot viewing, or
-  • The Hangouts App. This is also a Google product, and a download is also required.

Contact us for further details to connect and view most auction lots including collections.