

Lot Description Start Bid Lot Description Start Bid

Saturday, January 13th, 2018

5:00 p.m., Lots 373-1095

United States Singles



373 **Stampless: 1785 Cover to Haiti** \$200  
 Folded letter APR 19, pre-constitutional letter from a Ben Mason, "Philadelphia to Port-Au-Prince, ship "Taylor" via North Carolina, transcribed discussing ship matters incl. a sale of a ship for "7000 dollars", few wrinkles otherwise very fine ..... Est. \$300/400



374 **Stampless: 1784 Folded Letter Incoming From Haiti** \$200  
 Docketed OCT 26 from Port-Au-Prince to Baltimore, from Ben Mason introducing Thomas Wiswell, transcribed, calling him a "heart cock" and recommending introduction to the beautiful ladies, no markings, slight aging, fine to very fine cover ..... Est. \$300/400



375 E **Postmasters' Provisional: Albany, N.Y., 1847, 5c Essay, By Gavit & Co., in Black, #1Xa-E1c** \$60  
 Ungummed, nice margins all round, very fine. Brazer #1XaEc. Scott \$250 ..... Est. \$100/150



376 (★) **Postmasters' Provisional: Providence, R.I., 1846 5c and 10c, #10X1,10X2** \$150  
 Unused, both with full margins, fine to very fine. Scott \$950 ..... Est. \$200/300

1847 Issue

377 ○ **5c and 10c, #1, 2** Web \$300  
 #1 three margins with one cutting in, 2 almost four full margins, both with red cancels, fine to very fine. Scott \$1,200 ..... Est. \$400/500

378 ○ **5c and 10c, #1, 2** Web \$300  
 #1 with blue cancel and #2 with red grid, 3 margins on both, sound copies, fine to very fine. Scott \$1,245 .... Est. \$400/500

379 ○ **5c and 10c, #1, 2** Web \$200  
 Used, #2 small thin and tear, otherwise fine. Scott \$1,175 ..... Est. \$300/400

380 ○ **5c and 10c, #1, 2** Web \$200  
 Four #1's with faults or pen cancels, two #2 close cut no margins, v.g. Scott \$1,200 ..... Est. \$300/400



381 ★ **5c Red Brown, #1** \$600  
 O.g. (h.r.), tear at lower right and minor creases, fine to very fine appearance, photocopy of 1994 P.S.C. cert for strip. Scott \$6,500 ..... Est. \$700/1,000



382 ○ **5c Red Brown, #1** \$300  
 Ample to touching margins with Canadian 7-ring target and pen cancels, two small thins, otherwise fine, 2013 P.S.C. cert. Scott \$3,375 rare ..... Est. \$400/500

383 ○ **5c Red Brown, #1** \$150  
 Large to ample margins with black "5" cancel, minor corner crease, otherwise very fine, Ex. HR Harmer sale July 1957 . Scott \$525 ..... Est. \$200/300

Lot Description Start Bid Lot Description Start Bid



384 ○ **5c Red Brown, #1** **\$150**  
Four large margins with blackish-blue Paid and red cancel, very fine, *Ex. John Fox sale March 1957* . Scott \$450  
..... Est. \$200/300

385 ○ **5c Red Brown, #1** **\$150**  
Ample to large margins all around, blue cancel, very fine. Scott \$415 ..... Est. \$200/250

386 ○ **5c Red Brown, #1** **\$150**  
Four margin with red "5" cancel, Grade 85 very fine to extremely fine, 2007 P.S.C. cert. Scott \$525 ... Est. \$200/250



387 ○ **5c Red Brown, #1** **\$150**  
Four full margins with blue town cancel, very fine, 2008 P.S.C. cert. Scott \$500 ..... Est. \$200/300

388 ○ **5c Red Brown, #1** **\$100**  
Margin copy with full margins, red cancel, very fine, 2015 P.F. cert. Scott \$375 ..... Est. \$150/200

389 ○ **5c Red Brown, #1** **\$100**  
Four full margins with blue "PAID" cancel, very fine, 1997 P.F. cert. Scott \$425 ..... Est. \$150/200



390 ○ **5c Red Brown, #1** **\$100**  
Full margins with red grid cancel, Grade 85 very fine to extremely fine, 1982 P.F. cert. and 2008 P.S.C. cert. Scott Stamp Values \$450 ..... Est. \$150/200

391 ○ **5c Red Brown, #1** **\$100**  
Four full margins, blue cancel, very fine, 2003 P.F. cert. Scott \$415 ..... Est. \$150/200

392 ○ **5c Red Brown, #1** **\$100**  
Four balanced margins, red grid with manuscript offset on back, very fine, 2004 P.S.C. cert. Scott \$375 .. Est. \$150/200



393 ○ **5c Red Brown, #1** **\$90**  
Full to just touching at right, red grid cancel, fine to very fine. Scott \$375 ..... Est. \$130/150

394 ☒ **5c on 1849 Folded Letter to Canada, #1** **Web \$110**  
Clear to large margins all round, tied by clear blue Troy NY DEC 5 cds to Perth, 2 vert. folds, light red Prescott arrival, fine to very fine, 2017 P.S.A.G. cert. Scott \$450  
..... Est. \$150/200

395 ○ **5c Dark Brown, #1a** **\$200**  
Four full margins with red grid cancel, very fine, 2007 P.S.C. cert. Scott \$800 ..... Est. \$300/400



396 ○ **5c Dark Brown, "Dot in S" Variety, #1a** **\$110**  
Red cancel, clear to large margins all round, "tiny pinhole", handsome very fine appearance, 2017 P.F. cert. Scott \$800+ ..... Est. \$150/200

397 ○ **5c Orange Brown, #1b** **\$200**  
Four large margins with blue cancel, should grade well, extremely fine, 2006 P.F. cert. Scott \$790 ..... Est. \$300/400

**Scarce Mint Example**



398 (★) **10c Black, #2** **\$2,500**  
Unused, large margins all round, "uncancelled", small ink mark at left" (in margin), clean impression, very fine to extremely fine, 1989, 1977 P.F. certs. Scott \$15,000  
..... Est. \$3,000/4,000

Lot Description Start Bid Lot Description Start Bid



399 ○ **10c Black, #2** \$450  
Nice margins all round, red grid, very fine to extremely fine  
Grade 85, 2017 P.S.C. cert. Scott Stamp Values \$1,200  
..... Est. \$600/800



400 ○ **10c Black, #2** \$400  
Pos. 2L, four full margins with red cancel, Grade 85 very fine  
to extremely fine, 2007 P.F. cert. Scott Stamp Values \$1,200  
..... Est. \$500/600



401 ○ **10c Black, #2** \$350  
Four full margins with blue Paid cancel, very fine, *Ex H.R.  
Harmer sale Jan. 1958*. Scott \$950 ..... Est. \$500/600

402 ○ **10c Black, #2** \$350  
Four full margins with red grid cancel, very fine, 1999 P.F.  
cert. Scott \$825 ..... Est. \$500/600



403 ○ **10c Black, #2** \$300  
Four full margins with red grid cancel, very fine, 2008 P.S.C.  
cert. Scott \$825 ..... Est. \$400/500

404 ○ **10c Black, #2** \$300  
Four ample margins with blue numeral "10" cancel and  
stitch watermark, very fine Grade 80, 2017 P.S.C. cert. Scott  
\$1,050 ..... Est. \$400/500

405 ○ **10c Black, #2** \$300  
Three full margins to just touching at top, red grid cancel,  
fine to very fine, 1984 P.F. cert. Scott \$825 ..... Est. \$400/500



406 ○ **10c Black, #2** \$210  
Good to large margins all round, ms. cancel, very fine to  
extremely fine. Scott \$575 ..... Est. \$250/300

407 ○ **10c Black, #2** \$200  
Ample to just cutting in at bottom, red cancel, fine to very  
fine. Scott \$825 ..... Est. \$300/400

408 ○ **10c Black, #2** \$150  
Four full margins, red town cancel, creased, very fine  
appearance, *Ex H.R. Harmer auction Jan. 1957*. Scott \$825  
..... Est. \$200/300

1875 Reproductions of the 1847 Issue



409 (★) **5c Red Brown, #3** \$450  
Ungummed, beautiful copy, Grade 90 extremely fine, 2006  
P.S.C. cert. Scott Stamp Values \$1,100 ..... Est. \$600/800

410 (★) **5c Red Brown, #3** \$400  
Ungummed, big to full margins all around, nice example,  
very fine, 2001 P.F. cert. Scott \$850 ..... Est. \$500/600



411 (★) **5c Red Brown, #3** \$400  
Ungummed, nice margins all around, very fine, 2001 P.S.C.  
cert. Scott \$850 ..... Est. \$500/600

412 (★) **5c Red Brown, #3** \$400  
Ungummed, four clear margins, very fine, 2000 A.P.E.X.  
cert. Scott \$850 ..... Est. \$500/600

413 (★) **5c Red Brown, #3** \$400  
Ungummed, nice to large margins all round, very fine, 2006  
P.F. cert. Scott \$850 ..... Est. \$500/600

"Web" indicates that image(s) will be found on our website,  
www.harmerhau.com.



Lot Description Start Bid Lot Description Start Bid



414 (★) **5c Red Brown, #3** **\$400**  
 Ungummed, nice margins all round, very fine, 1991 P.F. cert. Scott \$850 ..... Est. \$500/600

415 (★) **5c Red Brown, #3** **\$350**  
 Ungummed, full balanced margins, pencil on back, very fine, 2005 P.F. cert. Scott \$850 ..... Est. \$500/600



416 (★) **5c Red Brown, #3** **\$250**  
 Ungummed, four margin with small thin upper left corner, otherwise fine to very fine. Scott \$850 ..... Est. \$350/400

417 (★) **10c Black, #4** **\$200**  
 Ungummed, margins to touching. Scott \$1,050 ..... Est. \$300/400

*1851-57 Imperforate Issue*



418 ○ **1c Blue, Type Ia, #6** **\$1,000**  
 Pos. 92R4 showing full design at bottom, marginal copy with huge margins three sides, touching at top, "two corner creases at bottom left", fine to very fine, *The extremely rare Type Ia was furnished only by 18 of the 200 subjects on Plate 4 (the remaining two bottom-row positions were sub-type Ic)* 2017 P.S.C. cert. Scott \$10,000 ..... Est. \$1,500/2,000



419 ○ **1c Blue, Type II, #7** **\$200**  
 Huge margins, black cds, extremely fine to superb Grade 95, 2012 P.S.C. cert. Scott Stamp Values \$750 .... Est. \$300/400



420 ▲ **1c, Types II & IIIa, Strip of 3, #7, 8A** **\$500**  
 Pos. 71-73, full margins to just touching, tied with black grid cancel on piece, fine to very fine, 2017 P.S.C. cert. Scott \$2,425 ..... Est. \$700/900



421 ○ **1c Blue, Type III, #8** **\$1,500**  
 Pos 99R2, used with three full to just touching at bottom, fine to very fine and scarce, 1988 P.S.C. cert. Scott \$9,000 ..... Est. \$2,000/3,000



422 ○ **1c Blue, Type III, #8** **\$150**  
 Four margin with black grid cancel, creased, small scrape at bottom, fine to very fine appearance, 1968 P.F. cert. Scott \$1,800 ..... Est. \$200/300

423 ○ **1c Blue, Type IIIa, #8A** **\$200**  
 Pos. 60R4, face free cancel, fine, 2013 P.F. cert. Scott \$800 ..... Est. \$300/400

424 ○ **1c Blue, Type IV, #9** **\$350**  
 "PAID" precancel, small tear at top right and horizontal crease at bottom right, fine to very fine and scarce, 2014 P.F. cert. Scott \$2,580 ..... Est. \$500/600

425 ○✉ **3c Type I, II Group, #10-11** **Web \$200**  
 Group of 3 #10s on pieces (each with blue cds incl. Lynchburg, Va), one marginal, all with close to large margins, also #11 on cover (Pos. #71L2L), #11 unusual shade on cover with Woodstock, VT docketed June 1, 1857, #26 unusual shade on cover Mittindague, Mass to Richmond, Ind., very fresh and overall very fine for these ..... Est. \$300/400

Lot Description Start Bid Lot Description Start Bid



426 ○ **5c Red Brown, #12** **\$150**  
Three full to just in at bottom, blue c.d.s. cancel, fine to very fine. Scott \$800 ..... Est. \$200/300

427 ○ **5c Red Brown, #12** **\$100**  
Four well balanced margin, very light cancel, appears unused, creased, extremely fine appearance, *Ex Harmers Rooke May 1957*. Scott \$675 ..... Est. \$150/200



433 ☒ **12c, Strip of 4 on Cover, #17** **\$250**  
Ample margins to just touching upper right corner, tied by red grid cancels to England, "cover cleaned to remove staining", otherwise fine to very fine, 2016 P.F. cert. Scott \$1,150 + (used pairs) ..... Est. \$400/500

1857-61 Perforate 15½ Issue



428 ★ **10c Green, Type II, #14** **\$750**  
O.g., full to just touching on sides, fine to very fine, 2005 P.F. cert. Scott \$5,000 ..... Est. \$1,000/1,500



434 ★ **1c Blue, Type I, #18** **\$450**  
Full o.g., fresh, fine or better, 2017 P.S.C. cert. Scott \$2,100 ..... Est. \$600/800



429 ○ **10c Green, Type II, #14** **\$150**  
Black cds, beautiful, Grade 95 extremely fine to superb Grade 95, 2017 P.F. cert. Scott Stamp Values \$550 ..... Est. \$250/300



435 (★) **1c Blue, Type Ia, #19** **\$1,400**  
Unused, "heavy horizontal crease at upper right and tear at right edge", fine, 2004 P.S.C. cert. Scott \$20,000..... Est. \$2,000/3,000

430 ○ **10c Green, Type IV, #16** **\$500**  
Pos. 65L1, nice margins all around, black cds, very fine, 2006 P.S.C. cert. Scott \$1,600 ..... Est. \$700/800



436 ○ **1c Blue, Type Ic, #19b** **\$250**  
Black grid cancel, "tiny toned spots upper right and perf. faults", otherwise fine to very fine, 2017 P.S.C. cert. Scott \$2,750 ..... Est. \$350/450



431 ○ **10c Green, Type IV, #16** **\$250**  
Black grid cancel, Pos. 65L1, nice margins to close at bottom, sound, fine, 2017 P.S.C. cert. Scott \$1,600 ..... Est. \$350/450

437 ○ **1c Blue, Type Ic, #19b** **\$1,000**  
Pos. 91R4, "E" relief, cds, "short perfs" (two), rich color, fine, 1977, 1984 P.F. (sound), 2017 P.S.C. certs. Scott \$7,500, *excellent example of the relief* ..... Est. \$1,400/1,800

432 ○ **12c Gray Black, #17** **\$100**  
Full margin with red grid cancel, nice copy, very fine to extremely fine. Scott \$280 ..... Est. \$150/200

Lot Description Start Bid Lot Description Start Bid



438 ★ **1c Blue, Type IV, #23** \$450  
O.g. (h.r.), "faults", v.g., 2017 P.S.C. cert. Scott \$10,000  
..... Est. \$600/700

439 (★) **1c Blue, Type IV, #23** \$500  
Unused, fine to very fine. Scott \$4,250 ..... Est. \$800/1,000

440 ☒ **1c Type IV on Cover, #23** *Web* \$110  
Small defect in top margin, tied to folded Dec 19, 1857 NY  
circular, fresh, a fine cover. Scott \$1,100 ..... Est. \$150/200



441 ★ **3c Rose, Type I, #25** \$600  
O.g., nicely centered, overall very fine, 1997 P.S.C. cert.  
Scott \$2,750 ..... Est. \$800/1,000

442 ★ **3c Rose, Type I, #25** \$200  
O.g., tiny hinge thin at top left and small pinhole at upper  
right, fine to very fine appearance, 2017 P.S.C. cert. Scott  
\$2,750 ..... Est. \$300/350



443 ○ **5c Red Brown, Type I, #28** \$230  
Cds's, "perf repair at left", nicely centered, very fine  
appearing, 2017 P.S.C. cert. Scott \$1,450 ..... Est. \$300/400

444 ○ **5c Red Brown, Type I, #28** \$300  
Used, well centered, very fine, 1981 P.F. cert. Scott \$1,050  
..... Est. \$400/500

445 ○ **5c Red Brown, Type I, #28** \$150  
Used with light corner crease lower left, otherwise fine to  
very fine. Scott \$1,050 ..... Est. \$200/300



446 ○ **5c Red Brown, Type I, #28** \$150  
Cds, fine, 2012 Weiss cert. Scott \$1,050 ..... Est. \$200/300

447 ○ **5c Indian Red, Type I, #28A** \$300  
Light cancel, reperfed at left, fine, 2008 A.P.E.X. cert. Scott  
\$3,500 ..... Est. \$400/500

448 ○ **5c Indian Red, Type I, #28A** \$200  
Dated cds, "left margin added...reperfed at top", very fine  
appearance, 2017 P.S.C. cert. Scott \$3,500 .... Est. \$300/400



449 ★ **5c Orange Brown, Type II, #30** \$400  
O.g., fine to very fine, 1976 P.F. cert. for block. Scott \$1,200  
..... Est. \$500/600



450 ★ **5c Orange Brown, Type II, #30** \$170  
L.h., "reperfed at top", rich color, very fine or better  
appearance, 2017 P.S.C. cert. Scott \$1,200 ..... Est. \$250/300

451 (★) **5c Orange Brown, Type II, #30** \$100  
Unused, fine. Scott \$500 ..... Est. \$150/200



452 ★ **5c Brown, Type II, #30A** \$200  
Disturbed o.g., partially reperfed at right, fine to very fine  
appearance, 2017 Crowe cert. Scott \$2,200 .... Est. \$300/400

453 (★) **5c Brown, Type II, #30A** \$100  
Unused, fine to very fine. Scott \$825 ..... Est. \$150/200



Lot Description Start Bid Lot Description Start Bid



454 (★) **10c Green, Type I, #31** **\$1,000**  
 Unused, "light diagonal crease at upper left and couple of soiled perf tips at right", fine, 2017 Crowe cert. Scott \$11,500 ..... Est. \$1,500/2,000



459 ★ **12c Black, Plate III, #36B** **\$150**  
 O.g., fine to very fine, 2016 P.S.C. cert. Scott \$700 ..... Est. \$200/300



460 (★) **30c Orange, #38** **\$120**  
 Unused, reperfed at bottom, fresh, well centered, very fine appearance. Scott \$700 ..... Est. \$200/250



455 ★ **10c Type II and III, Pair, #32, 33** **\$750**  
 O.g., tiny short perf at bottom, fine and scarce, 2017 P.S.A.G. cert. Scott \$12,000 ..... Est. \$1,000/1,500



461 (★) **90c Blue, #39** **\$200**  
 Unused, unpunched perf. at bottom, otherwise fine to very fine. Scott \$1,200 ..... Est. \$300/400



462 (★) **90c Blue, #39** **\$150**  
 Unused, small repair at right, fine to very fine appearance. Scott \$1,200 ..... Est. \$200/250



456 ○ **10c Green, Type IV, #34** **\$200**  
 Cds with two horizontal creases, otherwise fine, 1994 P.S.C. cert. Scott \$2,100 ..... Est. \$300/400



457 ○ **10c Green, Type IV, #34** **\$200**  
 Pos. 86L1, cds, "diagonal light crease", centered top right, fresh, 2017 P.S.C. cert. Scott \$2,100 ..... Est. \$250/300



463 ○ **90c Blue, #39** **\$750**  
 "Used with two small tear and a corner crease at the top left", fine to very fine appearance, *most used have fault issues* 2017 P.S.C. cert. Scott \$10,200, *very rare genuine* ..... Est. \$1,000/1,500



458 ☒ **12c, Plate I on Cover, #36; 22, 32, 33** **\$300**  
 "Tied on cover with #22, 32, and 33 to Australia via England and forwarded to Cyprus, the #36 missing two small pieces, #22 with clipped perfs at bottom and cover with edge faults and soiling", 2017 P.S.C. cert. .... Est. \$400/500



464 ○ **90c Blue, #39** **\$650**  
 Red grid, "small filled thin and light overall toning", *most used have fault issues* 2017 P.S.C. cert. Scott \$10,000, *very rare genuine* ..... Est. \$1,000/1,500

Lot Description Start Bid Lot Description Start Bid

1875 Reprints of the 1857 Issue



465 (★) **3c Scarlet, #41** **\$650**  
 Ungummed, sound, very fine for the issue, 2017 P.S.C. cert. Scott \$2,750 (fine), 479 issued ..... Est. \$1,000/1,400

466 (★) **10c Blue Green, #43** **\$500**  
 Ungummed, fresh and sound, fine to very fine, 1981 P.F. cert. Scott \$2,500, 516 sold ..... Est. \$700/900



467 (★) **12c Greenish Black, #44** **\$500**  
 Ungummed, "pulled perf top left", well centered for this, fine to very fine overall, 1981 P.F., 2017 P.S.C. certs. Scott \$2,750 (fine), 489 sold ..... Est. \$700/900

468 (★) **24c Blackish Violet, #45** **\$650**  
 Ungummed, usual centering, clean perfs, rich color, fine to very fine for the issue, 2017 P.S.C. cert. Scott \$3,000 (fine) 479 sold ..... Est. \$1,000/1,400



469 (★) **30c Yellow Orange, #46** **\$350**  
 Ungummed, "reperfed top and right", excellent color, centered, 2017 P.S.C. cert. Scott \$3,000, 480 sold ..... Est. \$450/600

470 (★) **90c Deep Blue, #47** **\$675**  
 Ungummed, centered, rich color, 2017 P.S.C. cert. Scott \$3,500 Only 454 were sold; the remaining 9,546 were destroyed on July 23, 1884, by order of the Postmaster General. .... Est. \$1,000/1,200



471 ○ **1861, 10c Dark Green, First Design, #62B** **\$300**  
 Very light cancel, fine, 2017 P.S.C. cert. Scott \$1,600 ..... Est. \$400/500

1861-1866 Issue



472 E **3c N.B.N.C. "Premiere Gravure" Essay, in Brown Rose, #65-E15h** **\$350**  
 N.h., hinged in selvage, nice impression, very fine, 2017 P.S.A.G. cert. Scott \$550 as hinged ..... Est. \$400/450



473 ☒ **3c on Advertising Cover, #65** **\$200**  
 Fine, tied by APR 20 MEMPHIS TENN cancel on Patriotic "John G. Wallace, Dealer in Sutlers' Supplies" overall backside advertising, toning and few minor creases on envelope, fine and rare, one of only two known ... Est. \$300/350

474 ☒ **3c on Patriotic Cover to Iowa, #65** *Web* **\$150**  
 Tied by California Mo 1862 pmk and ms. cancel, cover State seal and flag of Iowa with purple overall design reduced at left, with original patriotic letter sheet mentioning "Soldier boys are in good demand and all the girls are going to wait until the war is over before they choose a husband", fine to very fine ..... Est. \$200/300

475 ☒ **3c on Patriotic Cover to Connecticut, #65** *Web* **\$100**  
 Fine to very fine tied by New Orleans Dec 27 1862 cds on Hooker and Corcoran cover with content on patriotic letter sheet, small amount of staining on envelope, otherwise fine ..... Est. \$150/200

The live auction will be conducted through "Redpoint".  
 Contact us for details.



Lot *Description* *Start Bid*

476 ☒ **3c on Patriotic Cover, #65** *Web* **\$100**  
 Fine and reduced at right tied by Dec 19 1861 Washington D.C. cancel on General Scott color cachet with letter on McClellan lettersheet, fine ..... Est. \$150/200



477 P **3c Lake, Trial Color Proof on Stamp Paper, Perfed, #66TC6** **\$300**  
 O.g., fine, 1966 P.F. cert. Scott \$2,000 ..... Est. \$400/500

478 P **3c Lake, Trial Color Proof on Stamp Paper, Perfed, #66TC6** **\$280**  
 Full o.g., perfs touch at top, excellent color, 2017 P.S.C. cert. Scott \$2,000 ..... Est. \$400/500



479 ☐ **30c, Overprinted With Specimen Control Numbers, Block of 4, #71SJ** **\$270**  
 L.h. top left, others n.h., fresh, fine to very fine, 1976 APS, 2017 P.S.C. certs. Scott \$1,750 (hinged) ..... Est. \$400/500



480 ○ **90c Blue, #72** **\$100**  
 Black cork cancel, very fine, 2008 P.S.C. cert. Scott \$575 ..... Est. \$150/200

481 ○ **1863, 2c, 3 Better Cancels, #73** *Web* **\$60**  
 "Washington Territorial", "green target", and "blue Wells Fargo Express", all with either small condition issues or Wells Fargo with lightened pen cancel, scarce group, P.F. certs for all ..... Est. \$100/150



482 ○ **1862, 5c Red Brown, #75** **\$150**  
 Black grid with red boxed "PD" cancel, extremely fine, *ex Koopersmith and Newbury* 1986 and 1991 P.F. certs. Scott \$485 ..... Est. \$200/300

483 (★) **1863, 5c Brown, #76** **\$100**  
 Unused, excellent color, fine. Scott \$525 ..... Est. \$120/140

484 ○ **1866, 15c Black, #77** **\$150**  
 Black wedge cork cancel, jumbo copy, Grade 90J extremely fine, 1984, 1991 P.F., 2008 P.S.C. certs. Scott Stamp Values \$525, *only 10 graded higher* ..... Est. \$250/350

*1867 Grilled Issues*

485 E **3c Typographed Washington Essays, #79-E23i** *Web* **\$500**  
 "Gibson" essays, pl. on white wove, imperf and gummed, 6 diff. colors in blocks of 4, 11 singles, and one pair, all margins all round and very fresh, overall Very Fine, overall very fine. Scott \$1,850+ ..... Est. \$600/750



486 ○ **3c Rose, C. Grill, #83** **\$280**  
 Light Dec 6, 1867 cancel, sound, very fine for the issue, 2017 P.S.C. cert. Scott \$1,100 ..... Est. \$400/500

487 ○ **3c Rose, C. Grill, #83** **\$200**  
 Cork cancel, "short perf at top...few toned perf tips", very nice centering, fine for this, 2017 P.S.C. cert. Scott \$1,100 ..... Est. \$250/300



488 ○ **3c Rose, C. Grill, #83** **\$100**  
 Used with vertical crease at right, otherwise fine to very fine, 1996 P.F. cert. Scott \$1,100 ..... Est. \$150/200

489 P **3c, C. Grill, Imperf Proof on Stamp Paper, #83P5** **\$150**  
 Large part o.g., nice balanced margins all round, 1989 P.F. cert (for pair). Scott \$1,750 (pair) ..... Est. \$250/300

Lot Description Start Bid Lot Description Start Bid



490 ★ **2c Black, D. Grill, #84** **\$1,000**  
 "Dist. o.g., small corner crease and album black (adherence) on gum", fresh and rare copy, v.g.-fine and rare, Crowe 2017 cert. Scott \$16,000 ..... Est. \$1,500/2,000



496 ○ **12c Intense Black, Z. Grill, #85E** **\$1,500**  
 Black and red cancels, beautiful centering, extremely fine Grade 90, 2017 P.S.C. cert. Scott Stamp Values \$5,500 *only three graded higher* ..... Est. \$2,000/2,700



491 ○ **2c Black, D. Grill, #84** **\$325**  
 Target cancel, "minor perf faults", fresh, 2017 P.S.C. cert. Scott \$4,250 ..... Est. \$400/500



497 ○ **12c Intense Black, Z. Grill, #85E** **\$350**  
 Used, "reperfed at left", fresh, fine to very fine appearance, 2017 P.S.C. cert. Scott \$2,400 ..... Est. \$500/700

492 ○ **2c Black, D. Grill, #84** **\$300**  
 Used, couple of pulled perfs at top, fine, 1996 P.F. cert. Scott \$4,250 ..... Est. \$400/500

498 (★) **10c Green, E. Grill, #89** **\$200**  
 Unused, fine to very fine. Scott \$2,000 ..... Est. \$300/400



493 ☒ **2c Black, D. Grill on Cover, #84** **\$700**  
 Tied by black cancel and APR 30 Rochester N.Y. cancel, back flap ripped, fine, 1996 A.P.E.X. cert. Scott \$4,750 ..... Est. \$1,000/1,500



499 ○ **12c Black, E. Grill, Pair, #90** **\$150**  
 Used, well centered, very fine, 1988 P.F. cert. Scott \$800 ..... Est. \$200/300

500 ☒ **12c Black on Redirected Cover, #90** *Web* **\$100**  
 Tear at top and tied with cds with multiple redirecting (too many to count) incl. redirect with G.B. #33 and a label tied by due marking and states "this letter has been misplaced, it belongs probably to someone at the hotel", envelope is torn and some missing pieces but otherwise mostly intact, interesting item, v.g. .... Est. \$150/200



494 ○ **3c Rose, D. Grill, #85** **\$200**  
 Used, nice copy, fine to very fine, 1996 P.F. cert. Scott \$1,000 ..... Est. \$300/400



501 ★ **15c Black, E. Grill, #91** **\$1,500**  
 O.g., fine, 1987 P.F. cert. Scott \$12,500 .. Est. \$2,000/3,000

495 ○ **3c Rose, Z. Grill, #85C** **\$500**  
 Blue cancel, pencil signed on back, Grade 80 very fine, 2017 P.S.A.G. cert. Scott \$3,350 ..... Est. \$700/1,000

<i>Lot</i>	<i>Description</i>	<i>Start Bid</i>	<i>Lot</i>	<i>Description</i>	<i>Start Bid</i>
502 ○	<b>F. Grills Complete, #92-101</b> Mixed condition with some reperfs and couple with ms. cancels, otherwise fine. Scott \$6,740 .....	<i>Web</i> <b>\$350</b> Est. \$500/700			



509 (★) **10c Green, #106** **\$350**  
Unused, overall very fine, 1975 P.F. cert. Scott \$1,500, 451 sold ..... Est. \$500/700

503 (★) **24c Gray Lilac, F. Grill, #99** **\$200**  
Unused, "tiny thin above grill at lower left", otherwise fine, 2017 P.F. cert. Scott \$3,250 ..... Est. \$300/400

510 ★ **12c Black, #107** **\$450**  
O.g., black adherence on reverse, 1994 P.F., 2017 P.S.E. certs. Scott \$3,500, 389 sold ..... Est. \$700/900

*1875 Re-issue of the 1861-1866 Issue*



504 ★ **1c Blue, #102** **\$200**  
O.g., fine to very fine, 1997 P.F. cert. Scott \$750, 3,195 sold ..... Est. \$300/400

511 ★ **24c Dark Violet, #109** **\$1,000**  
Full o.g., excellent color, fine to very fine, 1975 P.F., 2017 P.S.E. certs. Scott \$5,500, 346 sold ..... Est. \$1,400/1,700

505 (★) **2c Black, #103** **\$325**  
Unused, fresh, fine to very fine, 1985 P.F. cert. Scott \$1,650 979 sold ..... Est. \$450/600

512 (★) **24c Dark Violet, #109** **\$600**  
Unused, Grade 75 fine to very fine, 1963 P.F., 2007 P.S.E. certs. Scott \$2,600, only 346 sold, only one graded higher .. Est. \$800/1,000



506 (★) **3c Brown Red, #104** **\$600**  
Unused, Grade 80 very fine, 1991, 2009 P.F. and 2009 P.S.E. certs. Scott \$1,700, only 465 sold, only 3 graded higher ..... Est. \$800/1,000

513 ★ **90c Blue, #111** **\$650**  
"Part o.g., couple small thins and pulled paper", excellent color, 10,000 stamps were printed (50 impressions), only 317 of the 90c were sold; the remaining 9,683 were destroyed on July 16, 1884 1988 P.S.E. cert. Scott \$6,750 ..... Est. \$1,000/1,300

507 ★ **3c Brown Red, #104** **\$550**  
"Part o.g.", deep rich color, fine to very fine, 1977 P.F., 2017 P.S.E. certs. Scott \$3,750, 465 sold ..... Est. \$800/1,000

*1869 Pictorial Issue*

508 (★) **5c Brown, #105** **\$500**  
Unused, Graded 80 very fine, 2008 P.S.E. cert. Scott \$1,100 only 672 sold, only one graded higher ..... Est. \$600/800

514 ○ **Pictorials Complete, #112-122** *Web* **\$350**  
Used, mixed condition. Scott \$4,391 ..... Est. \$500/600



515 ★★ **2c Brown, #113** **\$900**  
N.h., nice color, Grade 85 very fine to extremely fine, 2017 P.S.A.G. cert. Scott Stamp Values \$750 as hinged ..... Est. \$1,000/1,200

We are now accepting consignments for the 2018 APS StampShow auction in Columbus, Ohio.



Lot Description Start Bid Lot Description Start Bid



516 ★ **6c Ultramarine, #115** **\$300**  
 Small part o.g., fine, 2013 P.F. cert. Scott \$2,500  
 ..... Est. \$400/500

517 ○ **6c Ultramarine, #115** **\$400**  
 Red cork cancel, Grade 90 extremely fine, 2017 P.S.A.G.  
 cert. Scott Stamp Values \$525+ ..... Est. \$450/500



518 E **10c Lincoln Essay, in Blue, #116-EG1g** **\$200**  
 Die on cloudy cream bond, very fine. Brazer #116E-De.  
 Scott \$1,100 ..... Est. \$300/400



519 ○ **10c Yellow, #116** **\$100**  
 Used, extremely fine Grade 90, 2017 P.S.E. cert. Scott  
 Stamp Values \$325 ..... Est. \$150/180

**Beautiful Copy**



520 ★ **15c Brown & Blue, Type I, #118** **\$3,500**  
 Full o.g., excellent centering for this large copy, deep rich  
 colors and proof-like impressions on crisp paper, very fine or  
 better, sound 1995, 2017 P.F. certs, also 2017 P.S.E. cert  
 stating reperfed at top. Scott \$9,500, *one of the nicest copies we  
 have seen* ..... Est. \$4,500/5,500



521 (★) **15c Brown & Blue, Type I, #118** **\$150**  
 Unused, top right has small piece at corner added, otherwise  
 fine to very fine appearance. Scott \$3,250 ..... Est. \$200/300

522 ○ **15c Brown & Blue, Type I, #118** **\$150**  
 Target cancel, Grade 80 very fine, 2013 P.F. cert. Scott \$800  
 ..... Est. \$200/250

523 ○ **15c Brown & Blue, Type I, #118** **\$200**  
 Black cancel, nice centering, very fine, 2017 P.S.E. cert. and  
 1988 P.F. cert. Scott \$800 ..... Est. \$300/400

524 ○ **15c, 24c and 90c, #118, 120, 122** *Web* **\$300**  
 Used, fine. Scott \$3,100 ..... Est. \$400/500



525 ★ **15c Brown & Blue, Type II, #119** **\$650**  
 O.g. (h.r.), deep rich color, fine to very fine, 2017 P.S.E.  
 cert. Scott \$3,000 ..... Est. \$1,000/1,300

526 ★ **15c Brown & Blue, Type II, #119** **\$300**  
 Slightly dist. o.g. (h.r.), small thin at right, rich color, fine.  
 Scott \$3,000 ..... Est. \$500/700

527 (★) **15c Brown & Blue, Type II, #119** **\$150**  
 Regummed, otherwise fine to very fine, 2013 P.F. cert. Scott  
 \$1,050 ..... Est. \$250/300



528 ○ **15c Brown & Blue, Type II, Center Inverted, #119b** **\$2,500**  
 Circle of wedges cancel, "small repaired tear at upper right",  
 old P.F. cert states "repaired tears", *census #119b-CAN-52*  
 1990 P.F., 2017 P.S.E. certs. Scott \$22,500, *rare, three  
 unused and 100 used copies of #119b in Siegel census*  
 ..... Est. \$3,500/4,500

Lot Description Start Bid Lot Description Start Bid

**One of 83 Known Used**



529 ○ **24c Green & Violet, Center Inverted, #120b \$1,400**  
 Cork cancel, "left and bottom margins added and reperfed at top", fresh, fine to very fine appearance, *census #120b-CAN-62* 1980 P.F., 2017 P.S.E. certs. Scott \$37,500, *four unused, 83 used singles, one used pair, one on cover and the unique block of four, for a total of 94 copies of the perforated 24c invert in Siegel census* ..... Est. \$2,000/2,500



530 ★ **30c Ultramarine & Carmine, #121 \$400**  
 Part o.g., fine to very fine, 1987 P.F. cert. Scott \$4,000 ..... Est. \$600/800

531 (★) **30c Ultramarine & Carmine, #121 \$150**  
 Unused, centered right, sound, fine, Crowe 2017 cert. Scott \$1,650 ..... Est. \$200/250

532 ○ **30c Ultramarine & Carmine, #121 \$100**  
 Used, very fine. Scott \$400 ..... Est. \$150/200



533 ★ **30c Ultramarine & Carmine, Without Grill, #121a \$1,000**  
 Full o.g., centered top, rich color, *This is the true Scott 121a, which is often confused with the Double Paper, Without Grill variety. The shade and impression are noticeably different between the two* 1985 P.F., 2017 P.S.E. certs. Scott \$10,000 ..... Est. \$1,500/2,000

534 ○ **90c Carmine & Black, #122 \$250**  
 Neatly canc'd., better than normal centering, sound, very fine for this, 2017 P.S.E. cert. Scott \$1,700 .... Est. \$400/600

**1875 Re-issue of the 1869 Pictorial Issue**



535 ○ **2c Brown, #124 \$450**  
 Used, Grade 80 very fine, 2017 P.S.A.G. cert. Scott \$750 ..... Est. \$450/500



536 ○ **6c Blue, #126 \$300**  
 Used, scarce with cert stating "reperfed at right short perf at bottom, corner crease and added perf at top-second from left", otherwise very fine appearance, 2014 P.S.A.G. cert. Scott \$3,000, *2,226 sold* ..... Est. \$400/500

537 ○ **10c Yellow, #127 \$300**  
 Scarce oval "Cleveland, Ohio" cancel, small faults incl. a vertical crease, extremely fine appearance, 2014 P.S.E. cert. Scott \$1,800, *1,947 sold* ..... Est. \$400/500



538 ★ **15c Brown & Blue, Type III, #129 \$280**  
 Full o.g., fresh, fine or better, 1981 P.F. cert. Scott \$1,300 *1,981 sold* ..... Est. \$400/500

539 ★ **15c Brown & Blue, Type III, #129 \$150**  
 O.g., tiny hinge thin, otherwise very fine, 2017 P.S.E. cert. Scott \$1,300, *1,981 sold* ..... Est. \$200/300



540 ○ **15c Brown & Blue, Type III, #129 \$700**  
 Used, great centering, beautiful, Grade 90 extremely fine, 2017 P.S.E. cert. Scott Stamp Values \$2,250, *one graded higher* ..... Est. \$1,000/1,200

Lot Description Start Bid Lot Description Start Bid



541 ○ **15c Brown & Blue, Type III, #129** **\$350**  
Used with registry cancel, very fine, 1997 P.F. cert. and 1977 P.F. certs. Scott \$1,000, 1,981 sold ..... Est. \$500/600

542 ○ **15c Brown & Blue, Type III, #129** **\$170**  
Manuscript cancel, otherwise very fine, 2008 P.F. cert. and 1983 P.F. cert. Scott \$1,000, 1,981 sold ..... Est. \$250/350



543 ★ **24c Green & Violet, #130** **\$350**  
O.g., fresh, fine to very fine for this, 2017 P.S.E. cert. Scott \$2,000, 2,091 sold ..... Est. \$500/700

544 (★) **24c Green & Violet, #130** **\$200**  
Unused, fine to very fine, 1981 P.F. cert. Scott \$900, 2,091 sold ..... Est. \$300/400



545 ○ **24c Green & Violet, #130** **\$500**  
Used beautiful intense colors and impressions, fine to very fine, 2003 P.F. cert. Scott \$1,600, 2,091 sold .. Est. \$700/800

546 ○ **24c Green & Violet, #130** **\$500**  
Nice margins and centering, registry oval cancel, very fine, 1981 P.F., 2009 P.S.E. certs. Scott \$1,600, 2,091 sold ..... Est. \$700/800



547 ★ **30c Ultramarine & Carmine, #131** **\$400**  
O.g. (h.r.), small black marks on reverse, rich color, fine to very fine, 2017 P.S.E. cert. Scott \$2,250, 1,535 sold ..... Est. \$550/750



548 ○ **30c Ultramarine & Carmine, #131** **\$1,500**  
Used well centered copy jumbo margins, light corner crease, extremely fine appearance Grade 90, 2017 P.S.A.G. cert. Scott Stamp Values \$4,500, 1,535 sold ..... Est. \$2,000/2,500



549 ★ **90c Carmine & Black, #132** **\$700**  
“Dist. o.g.”, rich color, fine to very fine, 2017 P.S.E. cert. Scott \$3,750, 1,356 sold ..... Est. \$1,000/1,400

*1870-1871 National Bank Note With Grill*



550 ★ **1c, H. Grill, Strip of 3, #134** **\$400**  
Full o.g., probably n.h. but described as o.g. due to slight gum disturbances, “minor perf faults”, fresh, 2017 P.S.A.G. cert. Scott \$6,250+ ..... Est. \$600/800



551 ★ **6c Carmine, H. Grill, #137** **\$900**  
“Dist. o.g.”, excellent color, fine and attractive, 2017 P.S.E. cert. Scott \$5,000 ..... Est. \$1,300/1,600

"Web" indicates that image(s) will be found on our website, [www.harmershau.com](http://www.harmershau.com).



Lot Description Start Bid Lot Description Start Bid



552 ○ **10c Brown, H. Grill, #139** \$200  
Light cancel and well centered, fine to very fine, 1997 P.F. cert. Scott \$800 ..... Est. \$300/400

553 ○ **12c Dull Violet, H. Grill, #140** \$200  
Used, faulty perf at left, fine, 1976 P.F. cert. Scott \$3,600 ..... Est. \$300/400



554 ○ **24c Purple, H. Grill, #142** \$750  
Used, light pastel shade, sound, fine, 1979 P.F. cert. Scott \$6,500 ..... Est. \$1,000/1,500



555 ○ **30c Black, H. Grill, #143** \$750  
Used, intense shade and impression, fine to very fine, 1983 P.F. cert. Scott \$3,750 ..... Est. \$1,000/1,500



556 ○ **30c Black, H. Grill, #143** \$450  
Used, "reperfed at right", well centered for this, *difficult issue to obtain in sound condition with decent centering* 2017 P.S.E. cert. Scott \$3,750 ..... Est. \$600/800

557 ○ **30c Black, H. Grill, #143** \$400  
Used with small faults, fine to very fine appearance, 2015 P.S.E. cert. Scott \$3,750 ..... Est. \$600/700

558 ○ **30c Black, H. Grill, #143** \$400  
Used, "tiny faults", decent centering and color, fine appearing, 2017 P.S.E. cert. Scott \$3,750 ..... Est. \$500/700



559 ○ **30c Black, H. Grill, #143** \$300  
Used, light crease, closed tear, fine to very fine appearance, 1973 P.F. cert. Scott \$3,750 ..... Est. \$400/500

560 ○ **30c Black, H. Grill, #143** \$200  
Black cork cancel with tear at middle left, very fine appearance. Scott \$3,750 ..... Est. \$300/400

561 ○ **90c Carmine, H. Grill, #144** \$350  
Used, fine to very fine, 1995 P.F. cert. Scott \$2,250 ..... Est. \$500/700



562 ○ **7c Vermilion, I. Grill, #138A** \$200  
Cogwheel cancel, sound, fine to very fine for this, 2017 P.S.E. cert. Scott \$850 ..... Est. \$300/400

563 ○ **15c Orange, I. Grill, #141A** \$500  
Used, pressed crease at top, straight edge at right, otherwise fine, 2014 Weiss cert. Scott \$7,500 ..... Est. \$750/1,000

1870-1871 National Bank Note Without Grill



564 ○ **6c Carmine, #148** \$100  
NYFM cancel, nice centering, very fine. Weiss #GE-S1 ..... Est. \$150/200

565 ★ **7c Vermilion, #149** \$200  
Full o.g., fresh, fine, 2017 P.S.E. cert. Scott \$1,000 ..... Est. \$250/300

566 (★) **12c Dull Violet, #151** \$200  
Unused, nice color and well centered, very fine. Scott \$1,050 ..... Est. \$300/400

Lot Description Start Bid Lot Description Start Bid



567 ★ **15c Bright Orange, #152** **\$300**  
O.g., great color, fine or better, 1990 P.S.E. cert. Scott \$3,500 ..... Est. \$400/500

568 ★ **15c Bright Orange, #152** **\$300**  
Disturbed o.g., sharp color, fine or better, 2014 P.S.E. cert. Scott \$3,500 ..... Est. \$400/500



573 (★) **1873, 30c Gray Black, #165** **\$100**  
Regummed, reperfed at right, fine appearance, 2008 P.F. cert., 2017 P.S.E. certs. Scott \$1,200 ..... Est. \$150/180

574 ★ **1873, 90c Rose Carmine, #166** **\$300**  
O.g. "small corner crease at top left", fresh, fine overall, 2017 P.S.E. cert. Scott \$2,100 ..... Est. \$450/600



569 ★ **30c Black, #154** **\$1,300**  
Full o.g., sound, *the 1870 30¢ National ungrilled issue is one of the most difficult of all Bank Note issues to find in sound, well centered, original gum condition* 2017 P.S.E. cert. Scott \$7,000 ..... Est. \$1,700/2,000



570 (★) **90c Carmine, #155** **\$1,000**  
Unused, beautiful centering, rich color, extremely fine Grade 90, 2017 P.S.E. cert. Scott Stamp Values \$2,750, *only two graded higher* ..... Est. \$1,400/1,800



571 ★ **1873, 12c Blackish Violet, #162** **\$350**  
O.g., nice color, great centering, very fine, 2017 P.S.E. cert. Scott \$2,200 ..... Est. \$500/600

572 ★ **1873, 12c Blackish Violet, #162** **\$200**  
Slightly disturbed o.g., reperfed at left, otherwise fine to very fine, 1994 A.P.S. cert. Scott \$2,200 ..... Est. \$300/400

**One of Few With Full Perforations**



575 (★) **1875 Special Printing 1c Ultramarine, #167** **\$3,000**  
Ungummed, inscription marginal single, centered right, excellent color and nice perfs, very fine for the issue, *45 certified examples, of these, fewer than ten have perforations all around incl. this one as most were cut apart by scissors* 1992 P.F., 2017 P.S.E. certs. Scott \$14,000+ ..... Est. \$5,000/7,000

**One of the Nicest Copies Known**



576 (★) **1875 Special Printing 3c Blue Green, #169** **\$5,500**  
Ungummed, "reperfed at left", nice centering, unusually nice perfs without the usual scissors separations, choice very fine, *ex Siegel 1993 Rarity sale* 1975 P.F. cert. Scott \$21,500 *Siegel recently updated records for #169 contain 35 examples that have been certified as genuine by The Philatelic Foundation (incl. one on cover). Of these, only three have perforations all around and are confirmed as sound, one of the nicest copies known* ..... Est. \$8,000/10,000

Lot Description Start Bid Lot Description Start Bid

**One of 35 Certified Examples**



577 (★) **1875 Special Printing  
6c Dull Rose, #170 \$3,500**  
Ungummed, "vertical preprint paper fold at bottom and slightly faded color, typical clipped perfs on two sides", *not seen on the market for decades* 1996 P.S.E. cert. Scott \$21,000, *census records for #170 contains 35 certified examples, of these, approximately half have full perforations on all sides, very rare* ..... Est. \$5,000/7,000



582 ★ **10c Brown, With Secret Mark, #188 \$500**  
O.g., rich color on fresh paper, nicely centered, Grade 80 very fine, 1991, 2004 and 2016 P.F. certs. Scott \$1,700 ..... Est. \$700/800

583 (★) **10c Brown, With Secret Mark, #188 \$150**  
Regummed, fine to very fine appearance, 2005 P.F. cert. Scott \$600 ..... Est. \$200/250

*1879 American Bank Note Issue*

578 ☒ **1c and 2c on 1872 Cover, #182, 183 Web \$70**  
Sent from San Francisco to the U.S. Coast Survey Schooner *Hassler* anchored off Bodega Bay, franked with one Scott #182 and two 183 tied with oval bar and San Francisco cds cancels, an interesting historical item, slightly reduced at right affecting one stamp, notations in pencil on back, fine to very fine, *The Hassler was the first iron-hulled steamship used in the U.S. Coast Survey* ..... Est. \$100/150



584 ★★ **30c Full Black, #190 \$400**  
N.h., "light toning at bottom", fine to very fine, 2012 P.F. cert. Scott \$2,800 ..... Est. \$600/700

585 ★ **30c Full Black, #190 \$200**  
O.g., nice impression and intense color, very fine, 1973 P.F. cert. Scott \$850 ..... Est. \$300/400

586 ★ **30c Full Black, #190 \$150**  
O.g., fine, 2009 P.S.E. cert. Scott \$850 ..... Est. \$200/300



579 ○ **5c Blue, #185 \$100**  
Light cancel, well centered, extremely fine to superb Grade 95. Scott Stamp Values \$300 ..... Est. \$150/180

580 ★ **6c Pink, #186 \$200**  
O.g., fine, 2012 P.F. cert. Scott \$900 ..... Est. \$300/400



581 ★ **10c Brown, Without Secret Mark, #187 \$400**  
Part o.g., reperfed at right, fine to very fine appearance, 2010 P.S.A.G. cert. Scott \$3,000 ..... Est. \$600/800



587 ○□ **90c Carmine, Block of 4, #191 \$200**  
Boston cancel, tiny thin in upper right and small wrinkle on lower left stamp in corner, still rare, otherwise fine. Scott \$2,000 ..... Est. \$300/400



Lot Description Start Bid Lot Description Start Bid



588 (★) **1880 Special Printing  
2c Black Brown, #193** **\$2,700**  
Ungummed, “two small hinge thins”, rich color, nice centering, *census of #193 contains 48 certified examples, of which almost half have faults* 1989 P.F., 2017 P.S.E. certs. Scott \$17,000 ..... Est. \$3,500/4,500



589 (★) **1880 Special Printing  
7c Scarlet Vermilion, #196** **\$650**  
Ungummed, “reperfed at right and thin at center”, nice color, fine overall, *not seen on the market for decades* 1996 P.S.E. cert. Scott \$6,750 *unpublished census of #196 contains fewer than 85 examples* ..... Est. \$1,000/1,400

**Census Identifying 41 Certified Copies**



590 (★) **1880 Special Printing 90c Dull Carmine, #202** **\$4,000**  
Ungummed, “reperfed at right”, fine to very fine, *Siegel census of #202 contains approximately 41 certified copies. The 90c 1880 Special Printing on soft paper is notorious for its condition. Thins or more serious faults affect about half of the known examples* 2017 P.S.E. cert. Scott \$29,000 ..... Est. \$6,000/8,000



591 ★ **1882, 6c Re-Engraved, #208a** **\$100**  
Very l.h., nice centering, very fine, 1988 P.F., 2017 P.S.E. certs. Scott \$550 ..... Est. \$150/200

**1881-1888 American Bank Note Co. Issues**

592 ○ **2c Cancel Study, #210** **\$130**  
Many hundreds, somewhat sorted by star, town, number, letter, etc., decent selection ..... Est. \$200/300



593 ★★ **4c Blue Green, #211** **\$200**  
N.h., fresh and well centered, fine to very fine. Scott \$800 ..... Est. \$300/350

594 ★★ **30c Orange Brown, #217** **\$200**  
N.h., sharp color, fine to very fine, 2017 P.S.E. cert. Scott \$900 ..... Est. \$300/400

595 ★ **90c Purple, #218** **\$500**  
Very l.h., extremely fine graded XF 90, 2017 P.S.E. cert. Scott Stamp Values \$1,650, *only 16 graded higher* ..... Est. \$700/800



596 ★ **90c Purple, #218** **\$200**  
Disturbed o.g., Grade 80 very fine, 2012 P.S.E. cert. Scott \$850 ..... Est. \$300/400

597 ★ **90c Purple, #218** **\$200**  
O.g., nice impression, fine to very fine. Scott \$850 ..... Est. \$300/350

598 ○ **90c Purple, #218** **\$150**  
Oval registry cancel, Grade 90 extremely fine, 1999 P.F., 2010, 2013 P.S.E. certs. Scott Stamp Values \$475, *only 19 grade higher* ..... Est. \$200/250

**1890 American Bank Note Issue**



599 ★ **Set Complete, #219-229** **\$200**  
O.g. to h.r., slightly mixed condition, #228 thinned, nicely centered set, fine to very fine appearance. Scott \$1,560 ..... Est. \$300/400

Lot Description Start Bid Lot Description Start Bid



600 ★ **2c Carmine, Cap on Both "2's"** **\$150**  
**Variety, #220c**  
 O.g., fresh. Scott \$650 ..... Est. \$200/250

601 ★ **10c Green, #226** **\$80**  
 O.g. (h.r. and small paper remnant), very well centered, fresh, overall very fine. Scott \$175 ..... Est. \$100/140

602 P **15c Indigo, Imperf Proof on Stamp Paper, #227P5** **Web \$150**  
 N.h., corner pair, slight gum dist., extremely fine. Scott \$625+ ..... Est. \$250/300

603 ○□ **90c, Block of 6, #229** **Web \$150**  
 Oval registration cancel, fine to very fine. Scott \$1,080 for block and 2 singles ..... Est. \$250/350

1893 Columbian Issue



604 P **Columbians Complete, Plate Proofs on Card, #230P4-245P4** **\$300**  
 Full margins on all, some slight fading and tone marks, otherwise fine to very fine. Scott \$2,100 ..... Est. \$400/500

605 ★\*□ **3c, Corner Block of 8, #232** **Web \$140**  
 N.h., couple minor perf. separations and natural margin wrinkle, very fine. Scott \$780+ ..... Est. \$200/250

606 ★□ **4c, Plate Block of 8, #233** **Web \$100**  
 Bottom #17, top left n.h., others l.h. to o.g. (h.r.), major separations and some reinforcing, top right copy n.h. (small defect), slight soiling. Scott \$1,290+ ..... Est. \$150/200



607 ★★ **10c Black Brown, #237** **\$70**  
 N.h., nice color, fine to very fine. Scott \$285 ... Est. \$100/130

608 ★★ **30c Orange Brown, #239** **\$150**  
 N.h., small corner crease at top left, fine to very fine appearance Grade 75, 2017 P.S.E. cert. Scott Stamp Values \$475 ..... Est. \$200/250



609 ★ **\$1 Salmon, #241** **\$900**  
 O.g., nice color, Grade 85 very fine to extremely fine, 2017 P.S.A.G. cert. Scott Stamp Values \$1,200 ... Est. \$950/1,000

610 ○ **\$1 to \$4 Values, #241-244** **Web \$450**  
 Used, all with small faults, fine to very fine appearance. Scott \$2,750 ..... Est. \$600/700



611 ★ **\$2 Brown Red, #242** **\$350**  
 O.g., well centered, very fine, 2009 P.S.E. cert. Scott \$1,050 ..... Est. \$500/600

612 ★ **\$2 Brown Red, #242** **\$230**  
 L.h., fresh, fine to very fine, 2017 P.S.E. cert. Scott \$1,050 ..... Est. \$300/400



613 (★) **\$2 Brown Red, #242** **\$150**  
 Unused, beautiful centering, very fine to extremely fine, 2017 P.S.A.G. cert. Scott \$500 ..... Est. \$200/300

614 ○ **\$2 Brown Red, #242** **\$100**  
 Used, small thin, very fine appearance. Scott \$500 ..... Est. \$150/200



615 ○ **\$2 Brown Red, #242** **\$100**  
 Used, very small thin, otherwise very fine. Scott \$500 ..... Est. \$150/200

616 ★ **\$2, \$3 and \$5 Values, #242, 243, 245** **\$500**  
 O.g., \$2 small tear upper left, \$3 paper adhesion, otherwise fine. Scott \$4,700 ..... Est. \$700/900



Lot Description Start Bid Lot Description Start Bid



617 ★ **\$3 Yellow Green, #243** **\$350**  
Slightly dist. o.g., beautiful copy, extremely fine, 2017 P.S.A.G. cert. Scott \$1,350 ..... Est. \$500/600

618 ★ **\$3 Olive Green, #243** **\$300**  
O.g., slightly disturbed, otherwise very fine. Scott \$1,350 ..... Est. \$400/500



619 (★) **\$3 Yellow Green, #243** **\$280**  
Regummed, Grade 90 extremely fine, 2017 P.F. cert. Scott Stamp Values \$1,000 ..... Est. \$400/500

620 (★) **\$3 Olive Green, #243** **\$200**  
Regummed, otherwise very fine. Scott \$675 ... Est. \$300/400



621 ○ **\$3 and \$4 Values, #243, 244** **\$300**  
Used, \$4 with blue crayon mark, fine. Scott \$1,700 ..... Est. \$350/450



622 ★ **\$4 Crimson Lake, #244** **\$2,000**  
L.h., strong color, Grade 85 very fine to extremely fine, 2017 P.F. cert. Scott Stamp Values \$2,500 ..... Est. \$2,000/2,100



623 ★ **\$4 Rose Carmine, #244a** **\$800**  
O.g., nice impression and great centering, very fine to extremely fine Grade 85, 2017 P.S.A.G. cert. Scott Stamp Values \$2,500 ..... Est. \$1,200/1,500



624 ★ **\$4 Rose Carmine, #244a** **\$350**  
O.g. (h.r.), "small hinge thin", nicely centered, excellent color, handsome very fine appearance, 2017 P.S.E. cert. Scott \$2,000 ..... Est. \$400/500



625 ★ **\$4 Crimson Lake, #244** **\$300**  
O.g., fine, 2012 P.S.E. cert. Scott \$2,000 ..... Est. \$400/500



626 ○ **\$4 Rose Carmine, #244a** **\$1,500**  
Jun 8th 1895 Washington DC cds, a real beauty, Grade 95 extremely fine to superb, 2017 P.S.E. cert. Scott Stamp Values #244a \$5,250, *only one graded higher* ..... Est. \$2,500/3,500



627 ○ **\$4 and \$5 Values, #244, 245** **\$200**  
Used, \$4 repaired at top and \$5 reperfed, otherwise fine. Scott \$2,100 ..... Est. \$300/400

The live auction will be conducted through "Redpoint".  
Contact us for details.



Lot Description Start Bid Lot Description Start Bid



628 ★ **\$5 Black, #245** **\$450**  
 Very l.h., fine to very fine, 1996 P.F. cert. Scott \$2,300  
 ..... Est. \$600/700



629 ○ **\$5 Black, #245** **\$700**  
 Cds, Grade 90 extremely fine, 1981 P.F., 2017 P.S.E. certs.  
 Scott Stamp Values #245 \$2,200, *only 13 graded higher*  
 ..... Est. \$1,000/1,500



630 ○ **\$5 Black, #245** **\$250**  
 Lightly canc'd., small thin and small spot on reverse, fresh,  
 fine to very fine usage, signed Diena, etc. Scott \$1,200  
 ..... Est. \$300/350

*1894 Bureau Issue*

631 P□ **2c Pink, Type I, Plate Proof on Card, Block of 8, #248P4** *Web* **\$200**  
 Very fine, 2016 P.S.E. cert. Scott \$950 ..... Est. \$300/400



632 ★ **\$1 Black, Type I, #261** **\$100**  
 O.g., light crease at top, fine to very fine appearance. Scott \$1,000  
 ..... Est. \$150/200

633 ★ **\$1 Black, Type II, #261A** **\$450**  
 Large part o.g., nice centering, excellent color, very fine.  
 Scott \$2,100 ..... Est. \$700/900

634 ★ **\$1 Black, Type II, #261A** **\$300**  
 O.g., fine to very fine, 2006 P.F. cert. Scott \$2,100  
 ..... Est. \$400/500



635 ★ **\$1 Black, Type II, #261A** **\$200**  
 O.g., fine. Scott \$2,100 ..... Est. \$300/400

636 (★) **\$1 Black, Type II, #261A** **\$150**  
 Regummed, rounded coner upper left, fine, 2017 P.S.A.G.  
 cert. Scott \$850 ..... Est. \$200/250

637 ★ **\$2 Bright Blue, #262** **\$400**  
 O.g., fine to very fine. Scott \$2,750 ..... Est. \$600/800



638 (★) **\$2 Bright Blue, #262** **\$100**  
 Regummed, fine. Scott \$1,100 ..... Est. \$150/180

639 ○ **\$2 Bright Blue, #262** *Web* **\$100**  
 Used, sealed tears and short perfs at bottom, otherwise fine,  
 2003 P.S.E. cert. Scott \$1,200 ..... Est. \$150/200

640 ★ **\$5 Dark Green, #263** **\$500**  
 O.g., fine. Scott \$4,000 ..... Est. \$700/900

641 ★ **\$5 Dark Green, #263** **\$350**  
 O.g., tiny thin by "S" of postage, otherwise fine to very fine.  
 Scott \$4,000 ..... Est. \$500/600



642 (★) **\$5 Dark Green, #263** **\$350**  
 Regummed, otherwise fine to very fine, 1993 P.F. cert. Scott \$2,100  
 ..... Est. \$500/700

643 (★) **\$5 Dark Green, #263** **\$200**  
 Regummed, reperfed at top, fine appearance. Scott \$2,100  
 ..... Est. \$300/400

644 ○ **\$5 Dark Green, #263** **\$200**  
 Used with corner crease at bottom left, fine to very fine  
 appearance, 2017 P.S.E. cert. Scott \$2,600 .... Est. \$300/400

Lot Description Start Bid Lot Description Start Bid



- 645 ○ **\$5 Dark Green, #263** **\$150**  
Used, reperfed at bottom and repaired tears, fine to very fine appearance, 2003 P.S.E. cert. Scott \$2,600 .... Est. \$200/300
- 646 ○ **\$5 Dark Green, #263** **\$150**  
Used, repaired at left margin, fine to very fine appearance. Scott \$2,600 ..... Est. \$200/250



- 652 ★ **\$5 Dark Green, #278** **\$300**  
O.g. (h.r.), "traces of thinning along edge of hinge remnant", otherwise fine to very fine, 2017 P.S.A.G. cert. Scott \$2,000 ..... Est. \$400/500
- 653 ★★ **1898, 10¢ Brown, Type I, #282C** **\$120**  
N.h., fresh, fine to very fine. Scott \$525 ..... Est. \$150/200

1895 Watermarked Issue

- 647 ★★□ **2¢ Carmine, Type II, Plate Block of 6, #266** *Web* **\$150**  
N.h., wide side #170, fine to very fine. Scott \$1,100 ..... Est. \$200/300



- 648 ★★ **8¢, Plate # Imprint Strip of 3, #272** **\$200**  
N.h., large bottom #58, middle stamp is a gem, fresh and great color, very fine. Scott \$750+ ..... Est. \$300/400



- 649 ○ **8¢ Violet Brown, Watermarked USIR, #272a** **\$250**  
Used, generally fine to very fine, 1994 P.F. cert. Scott \$950 ..... Est. \$350/450



- 650 ★ **\$1 Black, Type I, #276** **\$150**  
O.g. (h.r.), fine. Scott \$600 ..... Est. \$200/250
- 651 ★ **\$2 Dark Blue, #277a** **\$200**  
O.g., fine to very fine, 1998 P.F. cert. Scott \$900 ..... Est. \$300/400



- 654 ★★□ **1898, 15¢, Block of 4, #284** **\$150**  
N.h., tiny shallow thin on lower left corner of upper left stamp and bottom two have a crease, fine to very fine. Scott \$1,900 ..... Est. \$200/300

1898 Trans-Mississippi Issue



- 655 P **1¢, Small Die Proof, #285P2** **\$150**  
Reduced on card, fine to very fine. Scott \$750 . Est. \$200/250

- 656 ★★□ **1¢, Plate Block of 4, #285** *Web* **\$100**  
N.h., large top with imprint and pl. #592, very fine, 2008 P.F. cert. Scott \$400 ..... Est. \$150/200



- 657 ★★ **8¢ Violet Brown, #289** **\$100**  
N.h., rich color, very fine, photocopy of 1982 P.F. cert. for block. Scott \$375 ..... Est. \$150/180



Lot Description Start Bid Lot Description Start Bid



658 ★★ **10c Gray Violet, #290** \$100  
N.h., fine to very fine. Scott \$380 ..... Est. \$140/180

659 ★★ **10c Gray Violet, #290** \$100  
N.h., nice well balanced copy, very fine, 1999 P.F. cert. Scott \$380 ..... Est. \$150/180



660 ★★ **\$1 Black, #292** \$500  
N.h., fingerprint on gum, generally fine to very fine, 1986 P.F. cert. Scott \$3,500 ..... Est. \$800/1,000

661 ★ **\$1 Black, #292** \$500  
O.g., well centered, very fine to extremely fine Grade 85, 2017 P.S.E. cert. Scott Stamp Values \$1,800 . Est. \$800/900



662 ★ **\$1 Black, #292** \$150  
O.g., thinned, very fine or better appearance. Scott \$1,400 ..... Est. \$250/350

663 ○ **\$1 Black, #292** \$200  
Lightly canceled, very fine, 2017 P.S.E. cert. Scott \$700 ..... Est. \$300/400



664 ○ **\$1 and \$2 Values, #292, 293** \$300  
Used, \$1 has couple of small thins, \$2 reperfed at left, otherwise fine. Scott \$1,750 ..... Est. \$400/500

665 ★ **\$2 Orange Brown, #293** \$350  
O.g., reperfed at left, otherwise very fine, 2017 P.S.A.G. cert. Scott \$1,800 ..... Est. \$500/600



666 ★ **\$2 Orange Brown, #293** \$300  
Disturbed o.g., fine. Scott \$1,800 ..... Est. \$400/500



667 (★) **\$2 Orange Brown, #293** \$200  
Regummed, with small thin and corner crease, fine to very fine appearance. Scott \$825 ..... Est. \$300/350

668 ○ **\$2 Orange Brown, #293** \$200  
Black cancel, nice centering, very fine, 1987 P.F., 2017 P.S.E. certs. Scott \$1,050 ..... Est. \$300/400



669 ★★□ **1901, 1c Pan-American, Plate Block of 10, #294** \$150  
N.h., one stamp with very minor dist., fine. Scott \$1,100 ..... Est. \$200/300



670 ★ **1901, 1c Pan-American, Center Inverted, #294a** \$1,300  
Part o.g., "tiny thin spot....small corner crease", scarce, 1989 P.F. cert. Scott \$12,500 ..... Est. \$2,000/2,500

We are now accepting consignments for the 2018 APS StampShow auction in Columbus, Ohio.



Lot Description Start Bid Lot Description Start Bid



671 ★★ **1901, 10¢ Pan-American, #299** \$70  
 N.h., marginal copy, very fine and attractive. Scott \$300+  
 ..... Est. \$100/130



672 (★)□ **1901, 10¢ Pan-American, Plate Block of 6, #299** \$350  
 Regummed, top #1161, decent centering, reinforced, fine to very fine. Scott \$6,750 ..... Est. \$500/700

1902-1908 Presidential Issue



673 ★★ **1¢ Blue Green, #300** \$110  
 N.h., marginal imprint copy, Grade 95 extremely fine to superb Grade 98, 2017 P.S.E. cert. Scott Stamp Values \$240+ ..... Est. \$150/200



674 ★★□ **5¢ Blue, Block of 4, #304** \$150  
 N.h., intense color, P.O. fresh, very fine. Scott \$600  
 ..... Est. \$200/300



675 ★★ **10¢ Pale Red Brown, #307** \$300  
 N.h., Grade 90 extremely fine, 2017 P.S.A.G. cert. Scott Stamp Values \$350 ..... Est. \$325/350



676 ★★ **50¢ Orange, #310** \$350  
 N.h., great color and very well centered, very fine, *Ex. Lee Gilbert sale June 1956*. Scott \$1,100 ..... Est. \$500/600



677 ★★ **\$2 Dark Blue, #312** \$750  
 N.h., fine to very fine, 1976 P.F. cert. for block of 4. Scott \$2,475 ..... Est. \$1,000/1,300



678 ★ **\$2 Dark Blue, #312** \$150  
 O.g., fine. Scott \$800 ..... Est. \$250/300

679 ★ **\$2 Dark Blue, #312** \$100  
 O.g., short perf at bottom, otherwise fine to very fine. Scott \$800 ..... Est. \$150/250



680 ★★ **\$5 Dark Green, #313** \$700  
 N.h., bottom margin example, fine, 1980 P.F. cert. Scott \$6,250 ..... Est. \$1,000/1,300

Lot Description Start Bid Lot Description Start Bid



681 ★ **\$5 Dark Green, #313** **\$425**  
Full o.g., fresh, well centered, very fine. Scott \$2,000  
..... Est. \$600/800

682 ★ **\$5 Dark Green, #313** **\$300**  
O.g., fine, 1999 P.F. cert. Scott \$2,000 ..... Est. \$400/500



683 ★ **\$5 Dark Green, #313** **\$270**  
O.g. (h.r.), just fine. Scott \$2,000 ..... Est. \$400/500

684 ★ **\$5 Dark Green, #313** **\$200**  
O.g., pulled perf at left, otherwise fine. Scott \$2,000  
..... Est. \$300/400

685 ○ **\$5 Dark Green, #313** **\$220**  
Used, straight edge at left, perfectly centered and excellent  
color, very fine. Scott \$700 ..... Est. \$250/300



686 ★★ **1908, 5c Blue, Imperf, #315** **\$150**  
N.h., four large margins, very fine and choice. Scott \$525  
..... Est. \$250/300

687 ★ **1908, 5c Blue, Imperf, Pair, #315** **\$300**  
L.h., large margins all round, Grade 90 extremely fine, 2017  
P.S.E. cert. Scott \$625+ ..... Est. \$400/500



688 ★ **1908, 5c Blue, Imperf, Pair, #315** **\$300**  
O.g., nice margins, very fine. Scott \$625 ..... Est. \$400/500

689 ★ **1908, 5c Blue, Imperf, Pair, #315** **\$200**  
L.h., nice margins, very fine. Scott \$625 ..... Est. \$300/400



690 ★★ **1903, 2c Carmine, Type II, Plate # Imprint Strip of 3, #319Fi** **\$200**  
N.h., large top #4514, Grade 85 very fine to extremely fine,  
2013 P.S.E. cert. Scott \$500+ ..... Est. \$300/350



691 ★★ **1903, 2c Carmine Rose, Type II, Plate # Imprint Strip of 3, #319Fj** **\$300**  
N.h., very large top #4616, l.h. in selvage, extremely fine and  
choice Grade 95, 2013 P.S.A.G. cert. Scott \$675 + (as  
singles) ..... Est. \$350/450



692 ★ **1908, 2c Type II, Experimental Coil, Perf 12 Vertically, Pair, #322** **\$1,400**  
O.g., pencil notations on reverse, "left stamp with tiny hinge  
thin", fresh, just fine, *intended only for use by private vending  
machine companies* 1995 P.F., 2017 P.S.E. certs. Scott  
\$17,500 ..... Est. \$2,000/2,500

693 ★★ **1904, Louisiana Purchase Set, #323-327** **\$150**  
N.h., 5¢ with fingerprint on gum, fine to very fine. Scott  
\$770 ..... Est. \$200/300



694 ★★ **1904, 3c Louisiana Purchase, #325** **\$400**  
N.h., Grade 95 extremely fine to superb, 2014 P.S.A.G.,  
2017 P.S.E. certs. Scott Stamp Values \$1,250, *only one graded  
higher* ..... Est. \$500/600



*Lot Description Start Bid Lot Description Start Bid*



695 ★★★□ **1904, 3c Louisiana Purchase, Plate Block of 4, #325** \$100  
 Top #2103, three are n.h., one l.h., fine. Scott \$575  
 ..... Est. \$150/200



696 ★★□ **1904, 5c Louisiana Purchase, Plate Block of 4, #326** \$150  
 N.h., top imprint #2099, fine to very fine. Scott \$1,150  
 ..... Est. \$250/300

697 ★□ **1904, 5c Louisiana Purchase, Plate Block of 6, #326** Web \$150  
 O.g., bottom imprint #2100, fine to very fine. Scott \$1,000  
 ..... Est. \$250/300

698 ★★□ **1907, 5c Jamestown, Block of 6, #330** Web \$200  
 N.h., few perf separations with pl. #3554, reinforced in margin. Scott \$1,800 ..... Est. \$300/400

*1908-1910 DL Watermark Issue*



699 ★★□ **13c, Plate Block of 6, #339** \$200  
 N.h., wide side imprint #4942, fine to very fine. Scott \$875  
 ..... Est. \$300/350

700 ★★□ **13c, Plate Block of 6, #339** Web \$150  
 N.h., left imprint #4948, light toning, very fine. Scott \$875  
 ..... Est. \$200/300

701 ★★□ **15c, Plate Block of 6, #340** Web \$100  
 N.h., top imprint #34952, fine. Scott \$1,175 . Est. \$150/200



702 ★ **\$1 Violet Brown, #342** \$100  
 L.h., fine to very fine. Scott \$450 ..... Est. \$150/180

703 ★ **\$1 Violet Brown, #342** \$100  
 O.g., fine to very fine. Scott \$450 ..... Est. \$150/180



704 ★★ **1908, 1c, Vertical Coil, Line Pair, #348** \$250  
 N.h., Grade 85 very fine to extremely fine, 2016 P.S.E. cert.  
 Scott Stamp Values \$750 ..... Est. \$350/450

705 ★★ **1910, 4c, Vertical Coil, Pair, #350** \$300  
 N.h., fine to very fine, 1999 P.F. cert. Scott \$900 Est. \$400/500



706 ★ **1909, 5c, Vertical Coil, Line Pair, #351** \$250  
 O.g., 1977 P.F., 2016 P.S.E. certs. Scott \$1,075  
 ..... Est. \$350/450

707 ★ **1909, 5c, Vertical Coil, Line Pair, #351** \$150  
 O.g., very fine, 2006 P.F. cert. Scott \$1,075 ... Est. \$250/300



Lot Description Start Bid

1909 Perforate 12 Vertical Issues



- 708 ★★ **1c, Horizontal Coil, Line Pair, #352** \$200  
N.h., fine, 2001 P.F. cert. Scott \$1,800 ..... Est. \$300/350
- 709 ★ **2c, Horizontal Coil, Line Pair, #353** \$100  
L.h., fine to very fine, 2007 P.S.E. cert. Scott \$750  
..... Est. \$150/200



- 710 ★ **4c, Horizontal Coil, Line Pair, #354** \$150  
O.g., slight gum disturbance (not listed on cert.), fine, 2008  
P.S.E. cert. Scott \$1,400 ..... Est. \$200/300



- 711 ★ **10c, Horizontal Coil, #356** \$700  
O.g., pencil notation on back, fine to very fine, 1989 P.S.E.  
cert. Scott \$3,250 ..... Est. \$1,000/1,500
- 712 ★ **10c, Horizontal Coil, #356** \$650  
L.h., excellent color, fine to very fine centering, 1980, 1992,  
P.F., 2017 P.S.E. certs. Scott \$3,250 ..... Est. \$1,000/1,400



- 713 ★ **10c, Horizontal Coil, Pair, #356** \$1,700  
O.g., fresh, fine to very fine overall, 2017 P.S.E. cert. Scott  
\$7,000 ..... Est. \$2,500/3,000

Lot Description Start Bid

1909 Bluish Paper Issue



- 714 ★ **6c Red Orange, #362** \$300  
O.g., fresh copy, fine to very fine for the issue, 2017 P.S.E.  
cert. Scott \$1,250 ..... Est. \$400/500
- 715 ★ **6c Red Orange, #362** \$300  
O.g., sweated gum, fine, 1988 A.P.E.X. cert. Scott \$1,250  
..... Est. \$400/500
- 716 ★ **10c Yellow, #364** \$300  
O.g., fresh copy, fine to very fine for the issue, 2017 P.S.E.  
cert. Scott \$1,600 ..... Est. \$400/500



- 717 ★ **13c Blue Green, #365** \$500  
O.g., fine, 2017 P.S.E. cert. Scott \$2,600 .... Est. \$750/1,000
- 718 ★ **13c Blue Green, #365** \$150  
O.g., small thin, fine. Scott \$2,600 ..... Est. \$250/300



- 719 ★ **1910, 1c, Vertical Coil, Line Pair, #385** \$300  
O.g., Grade 95 extremely fine to superb, 2017 P.S.E. cert.  
and 1976 P.F. cert. Scott Stamp Values \$1,000, *highest grade*  
..... Est. \$400/500
- 720 ★★ **1912, 4c, Horizontal Coil,  
Line Pair, #395** \$150  
N.h., fine to very fine, 1997 P.F. cert. Scott \$1,100  
..... Est. \$250/350

Lot Description Start Bid Lot Description Start Bid

1913-1915 Panama-Pacific Issue



721 ★★ Complete, Both Perf Types, #397-404 \$300  
O.g. to n.h., #404 h.r., generally fine to very fine. Scott \$1,256+ ..... Est. \$400/500



722 ★★ 10¢ Perf 12, Orange Yellow, #400 \$150  
N.h., marginal copy, nice centering, extremely fine, photocopy of 2009 P.S.E. cert. for block Grade 90, should grade high. Scott \$250 ++ ..... Est. \$200/250

723 ★★ 10¢ Perf 12, Orange Yellow, #400 \$110  
N.h., well centered, immaculate and very fine. Scott \$250 ..... Est. \$150/200



724 ★□ Complete, Perf 10, Blocks of 4, #401-404 \$600  
O.g., 1¢ and 10¢ fine to very fine and others just fine. Scott \$3,560 ..... Est. \$900/1,200



725 ★ 10¢ Perf 10, #404 \$150  
Slightly disturbed o.g., fine to very fine. Scott \$650 ..... Est. \$250/300

726 ★★★□ 1912, 1¢, 2¢ Plate # Collection, #405-406 Web \$800  
N.h. to o.g., 8 1¢ pl. blocks, 67 2¢ pl. blocks, about 40 blocks of 4 and strips of 3 with pl. #s, spot check shows about 2/3 n.h., by pl. #, generally fine ..... Est. \$1,200/1,500

727 ★ 1912, 2¢ Plate # Singles Accumulation, #406 Web \$700  
O.g., approximately 2000, by pl. #, spot check shows mostly o.g. with occasional n.h., some better numbers, dupl. up to about 8 on common numbers, generally fine ..... Est. \$1,000/1,250



728 ★★ 1912, 1¢, Horizontal Coil, Line Pair, #412 \$150  
N.h., extremely fine Grade 90, 2017 P.S.E. cert. Scott Stamp Values \$425 ..... Est. \$200/250



729 ★★ 1912, \$1 Violet Brown, #423 \$1,100  
N.h., Grade 85 very fine to extremely fine, 2017 P.S.A.G. cert. Scott Stamp Values \$1,350 ..... Est. \$1,200/1,300

1914-1915 Perforate 10 Issue

730 ★□ 1¢ Plate Block Collection, #424 Web \$120  
O.g., 10 pl. blocks of 6, 4 pl. blocks of 10 with COIL STAMPS (1 n.h.), few smaller blocks or strips, mostly fine or better. Scott \$1,499 ..... Est. \$180/220

731 ★□ 2¢ Plate Block Collection, #425 Web \$500  
108 pl. blocks of 6 (mostly n.h.), 4 pl. blocks of 10 with COIL STAMPS (2 n.h.), by pl. #, few smaller blocks or strips, generally fine ..... Est. \$750/1,000



732 ★★ 3¢ Deep Violet, #426 \$100  
N.h., huge margins all around, Grade 95J extremely fine to superb, 2017 P.S.E. cert. and 1987 P.F. cert. Scott Stamp Values \$325 ++ ..... Est. \$150/180



733 ★★ □ **3c, Plate Block of 6, #426** *Web* **\$100**  
 N.h., side pl. #7555, pink back, very fine. Scott \$400  
 ..... Est. \$150/180



734 ★★ **20c Ultramarine, #438** **\$300**  
 N.h., real beauty, Grade 90 extremely fine, 2017 P.S.E. cert.  
 Scott Stamp Values \$900 ..... Est. \$400/500



735 ★★ □ **20c, Plate Block of 9, #438** **\$500**  
 N.h., small bottom pl. # 6920, fine. Scott \$6,700  
 ..... Est. \$600/800



736 ○ **20c Ultramarine, #438** **\$350**  
 Light cancel, Grade 100 superb, 2017 P.S.A.G. cert. Scott  
 Stamp Values \$475, as 98 *no others graded this high*  
 ..... Est. \$400/450



737 ★★ **50c Violet, #440** **\$200**  
 N.h., very fine. Scott \$1,000 ..... Est. \$300/400

738 ★ **50c Violet, #440** **\$100**  
 O.g., fine to very fine. Scott \$425 ..... Est. \$150/180



739 ★ **1914, 3c Horizontal Flat Plate Coil, Line Pair, #445** **\$150**  
 O.g. (h.r.), fine to very fine, 2004 P.S.E. cert. Scott \$1,200  
 ..... Est. \$250/350

740 ★★ **1914, 5c Horizontal Flat Plate Coil, Line Pair, #447** **\$100**  
 N.h., nice copy, very fine, 1988 A.P.E.X. cert. Scott \$525  
 ..... Est. \$150/200



741 ☒ **1915, 2c Red, Type I, Vertical Rotary Coil on Cover, #449** **\$200**  
 Tied by Feb 12 1916 cds mailed from Detroit to Fred Schmalzriedt, generally fine to very fine. Scott \$1,500  
 ..... Est. \$300/400

*1914-1916 Perforate 10 Coil Issues*



742 ★★ **2c Carmine Rose, Type I, Horizontal Rotary Coil, Pair, #453** **\$150**  
 N.h., very fine Grade 80, 2012 and 1990 P.F. certs. Scott \$625 ..... Est. \$200/250

743 ★★ **2c Red, Type II, Horizontal Rotary Coil, Pair, #454** **\$400**  
 N.h., fresh and very well centered, Grade 95 extremely fine to superb, 2008 P.S.E. cert. Scott Stamp Values \$1,100, *only one graded higher* ..... Est. \$500/600



Lot Description Start Bid



- 744 ★★ **2c Red, Type II, Horizontal Rotary Coil, Line Pair, #454** **\$150**  
 N.h., fine to very fine, 1985 P.F. cert. Scott \$850  
 ..... Est. \$200/250
- 745 ★ **3c Horizontal Rotary Coil, Line Pair, #456** **\$200**  
 O.g., fine, 2008 P.F. cert. Scott \$1,250 ..... Est. \$300/400
- 746 ★★ **4c Horizontal Rotary Coil, Line Strip of 5, #457** *Web* **\$100**  
 N.h., very fine. Scott \$520 ..... Est. \$150/200

1914 Imperforate Coil Issue



- 747 ★★ **2c, Pair, #459** **\$450**  
 N.h., fresh, very fine, 2017 P.F. cert. Scott \$650 . Est. \$450/500



- 748 ★★ **2c, Pair, #459** **\$300**  
 N.h., Grade 95 extremely fine to superb, 2005 P.S.E. cert. Scott Stamp Values \$900, *only 13 graded higher* Est. \$400/500
- 749 ★★ **2c, Pair, #459** **\$200**  
 N.h., nice margins all round, small handstamp on reverse, very fine, 1991 P.F. cert. Scott \$650 ..... Est. \$300/350



- 750 ★★ **2c, Line Pair, #459** **\$300**  
 N.h., with normal crease, very fine, 2013 P.S.E. cert. for strip of 4. Scott \$875 ..... Est. \$400/500
- 751 ★★ **2c, Line Pair, #459** **\$100**  
 N.h., vertical crease on right stamp, otherwise very fine, 1991 P.F. cert. Scott \$875 ..... Est. \$150/200

Lot Description Start Bid



- 752 ★★ **1915, \$1 D.L. Watermark, Perf 10, #460** **\$250**  
 N.h., fine and attractive, 2017 P.S.E. cert. Scott \$1,450  
 ..... Est. \$350/450
- 753 ★ **1915, \$1 D.L. Watermark, Perf 10, #460** **\$150**  
 O.g., very fine. Scott \$650 ..... Est. \$200/300



- 754 ★★□ **1915, 2c S.L. Watermark, Perf 11, Plate Block of 6, #461** **\$500**  
 N.h., large top pl. #7264, fine, 2004 P.S.E. cert. Scott \$2,600 ..... Est. \$700/1,000

1916-1919 Perforate 10 Issue



- 755 ★★□ **5c, Double Error in Block of 12, #467** **\$700**  
 N.h., nice centering, very fine, 1990 P.F. cert. Scott \$2,900  
 ..... Est. \$900/1,200

Lot Description Start Bid Lot Description Start Bid



756 ★★□ **5c, Double Error in Sheet of 100, #467** \$500  
N.h., pl. #7942, very nicely center and fresh, very fine. Scott \$3,400 ..... Est. \$700/1,000

757 ★ **7c Black, #469** Web \$100  
O.g., small bottom pl. #7719, fine to very fine. Scott \$1,350 ..... Est. \$150/250



758 ★ **50c Light Violet, #477** \$170  
O.g., fine to very fine, copy of 1995 P.F. cert. Scott \$850 ..... Est. \$250/300

759 ★ **50c Light Violet, #477** \$150  
L.h., fine, 2007 P.S.E. cert. Scott \$850 ..... Est. \$200/250

760 ★ **50c Light Violet, #477** \$150  
Dist. part o.g., very fine. Scott \$850 ..... Est. \$200/300



761 ★ **50c Light Violet, #477** \$150  
O.g., fine to very fine. Scott \$850 ..... Est. \$200/300

762 ★ **50c Light Violet, #477** \$130  
O.g. (h.r.), fine, 2017 P.S.E. cert. Scott \$850 . Est. \$200/300

763 ★ **\$1 Violet Black, #478** \$100  
O.g., fine to very fine. Scott \$600 ..... Est. \$150/200



764 ★★ **1917, \$2 Dark Blue, #479** \$450  
N.h., fresh, great color and centering, Grade 95 extremely fine to superb, 2017 P.S.E. cert. Scott Stamp Values \$1,250 *only 11 grade higher* ..... Est. \$600/700



765 ★★ **1919, 5c Horizontal Coil, Small Perf Holes, Pair, #496a** \$150  
N.h., very fine, 2016 P.S.E. cert. Scott \$700 ... Est. \$200/300

*1917-1919 Perforate 11 Issue*

766 ★★★□ **1c Plate Block Collection, #498** Web \$200  
N.h. to o.g., 108 pl. blocks, by pl. #, spot check shows over 1/2 n.h., mostly fine or better ..... Est. \$300/400

767 B★ **1c, A.E.F. Booklet Pane of 30, #498f** Web \$250  
O.g. (h.r.), erased pencil mark in selvage not mentioned in cert., fine to very fine, 2016 A.P.S. cert. Scott \$1,050 ... Est. \$350/450

**One of the Rarest Perf 10 Varieties**



768 ★★ **1c, Perf 10 At Top, #498g** \$10,000  
N.h., top copy in pair, excellent centering for this, sharp color, immaculate and very fine Grade 80, the only mint copy graded at this point by PSE and none by the Philatelic Foundation, the nicest mint single copy recorded at this point: copy centered to bottom realized hammer \$26,000 in a 2009 auction, 1981 P.F., 2017 P.S.E. certs. Scott \$27,500 (grade of fine) *Siegel records of #498g contain thirteen unused and five used examples of this rarity* ..... Est. \$15,000/20,000



Lot Description Start Bid Lot Description Start Bid



769 ★★ **2c, Type I, Imperf Horizontally, Vertical Pair, #499a** \$150  
 N.h., couple very minor skips, priced as hinged, very fine, 1984 P.F. cert. Scott \$1,000 ..... Est. \$200/300

774 ★ **3c, Type I, Imperf Horizontally, Vertical Pair, #501c** \$400  
 O.g., offset on reverse, very fine and scarce. Scott \$2,100 ..... Est. \$500/700

770 ★ **2c, Type I, Imperf Between, Vertical Pair, #499c** \$150  
 L.h., Pos. 54-64, very fine, 1972 A.P.E.X. cert. Scott \$900 ..... Est. \$250/300

775 ★ **3c, 4c and 5c Plate # Singles Accumulation, #501-504** *Web* \$200  
 O.g., approximately 475, incl. type I and II on 3¢, by pl. #, a few n.h., no better numbers noted, minor dupl., fine overall ..... Est. \$300/400



771 ★★ **2c Deep Rose, Type Ia, #500** \$100  
 N.h., pl. #10209 single, fine to very fine. Scott \$550 ..... Est. \$150/200



776 ★★□ **5c Error, Single in Block of 6, #505** \$150  
 N.h., fine to very fine. Scott \$625 ..... Est. \$200/300



772 ★★□ **2c, Type Ia, Plate Block of 6, #500** \$200  
 N.h., side pl. #10209, natural gum skip on one stamp, otherwise fine. Scott \$2,000 ..... Est. \$300/400

773 ★□ **2c, Type Ia, Plate Block of 6, #500** \$200  
 O.g. (h.r.), diagonal crease on stamp 4 and 5, small thin on 4, top pl. #10208, otherwise fine. Scott \$2,000 .. Est. \$300/400



777 ★★□ **5c Error, Single in Block of 9, #505** \$300  
 N.h., fine to very fine. Scott \$1,000 ..... Est. \$400/500



Lot Description Start Bid Lot Description Start Bid



- 778 ★□ **5c Error, Single in Block of 9, #505** \$300  
N.h., perf tip stuck on back of upper left stamp, beautiful centering, very fine. Scott \$1,000 ..... Est. \$400/500
- 779 ★□ **5c Error, Single in Block of 9, #505** Web \$150  
O.g., error n.h., fine. Scott \$650 ..... Est. \$200/250
- 780 ★ **20c Light Ultramarine, #515** Web \$100  
N.h., small top pl. #13471, fine. Scott \$1,000 Est. \$150/200



- 781 ★□ **30c, Plate Block of 6, #516** \$150  
N.h., wide side pl. #6927, fine to very fine. Scott \$925 ..... Est. \$200/250

*1918 Bi-Color Issue*



- 782 ★ **\$2 Orange Red & Black, #523** \$200  
N.h., wrinkles, fine. Scott \$1,100 ..... Est. \$300/350
- 783 ★ **\$2 Orange Red & Black, #523** \$150  
N.h., fine. Scott \$1,100 ..... Est. \$250/350
- 784 ★ **\$2 Orange Red & Black, #523** \$100  
O.g., nicely centered, very fine. Scott \$500 ..... Est. \$150/200



- 785 ★ **\$2 Orange Red & Black, Pair, #523** \$200  
Very l.h., appear n.h., very fine. Scott \$1,000 .. Est. \$300/350
- 786 (★)□ **\$2 Orange Red & Black, Centerline Block of 4, #523** Web \$70  
Unused, generally fine to very fine. Scott \$2,400 ..... Est. \$100/150

*1918-1923 Issue*

- 787 ★★ **1c Offset Plate # Singles Accumulation, #525** Web \$150  
Approximately 650, by pl. #, spot check shows mix of n.h. and o.g., some better numbers, dupl. up to about 8 on common numbers, generally fine ..... Est. \$200/250
- 788 ★□ **2c, Offset, Type V, Plate Block of 6, #527** Web \$100  
N.h., large top #11204, nice impression, very fine. Scott \$350 ..... Est. \$150/180
- 789 ★ **2c Offset, Type VII Plate # Singles Accumulation, #528B** Web \$2,500  
O.g., approximately 3,500, by pl. #, spot check shows a few n.h., some better numbers, dupl. up to about 12 on common numbers, generally fine. Scott approximate \$70,000+ ... Est. \$4,000/5,000
- 790 ★★□ **3c Offset, Type IV Plate Block Collection, #530** Web \$300  
Nearly 80% n.h., 76 pl. blocks, by pl. #, pl. blocks of 4 and strips of 3 with pl. #s, shades, some better numbers, mostly fine or better. Scott \$4,124 ..... Est. \$400/550



- 791 ★□ **2c Offset Imperf, Type IV, Plate Block of 6, #532** \$100  
O.g., huge margins, wide side pl. #10918, extremely fine. Scott \$370 ..... Est. \$150/180
- 792 ★□ **2c Offset Imperf, Type VI, Plate Block of 6, #534A** Web \$90  
O.g., wide side pl. #11710, very fine. Scott \$400 Est. \$120/150

Lot Description Start Bid Lot Description Start Bid



793 ★★ **1919, 3¢ Victory, #537** \$250  
N.h., Grade 100J superb, 2017 P.S.A.G. cert. Scott Stamp Values \$280 as 98 4, none graded this high ..... Est. \$300/350

794 ★○☒ **1919, 3¢ Victory Collection, #537** Web \$150  
Incl. n.h. pl. block, 6 covers and used singles and blocks, fine ..... Est. \$200/250

795 ★★☐ **1919, 1¢ Rotary Coil Waste, Perf 11 By 10 Plate Block Accumulation, #538** Web \$150  
O.g. to n.h., 15 pl. blocks of 4, some with additional stamps up to 10, with S, star, or pl., no better numbers noted, mostly fine or better. Scott \$1,803 ..... Est. \$200/240



796 ★★ **1919, 2¢ Type II, Rotary Coil Waste, Perf 11 x 10, #539** \$850  
N.h., usual centering, fine to very fine for the issue, 2017 P.S.E. cert. Scott \$4,250 (fine) ..... Est. \$1,200/1,500

797 ★ **1919, 2¢ Type II, Rotary Coil Waste, Perf 11 x 10, #539** \$700  
O.g., usual centering, fine, 1968 P.F. cert. Scott \$2,700 (fine) ..... Est. \$1,000/1,300

798 ★☐ **1921, 1¢ Rotary Coil Waste, Perf 11, Plate Block of 4, #545** Web \$100  
O.g., small top with pl. #13576 and two extra singles at left, v.g.-fine. Scott \$1,150 ..... Est. \$250/300



799 ★★☐ **1921, 2¢ Rotary Coil Waste, Perf 11, Plate Block of 4, #546** \$300  
N.h., top pl. #12922, "S30", fine to very fine. Scott \$1,300 ..... Est. \$400/500



800 ★★ **1920, \$2 Carmine & Black, #547** \$650  
N.h., Grade 98 superb, 2017 P.S.A.G. cert. Scott Stamp Values \$2,250 *only one grades higher* ..... Est. \$900/1,000

801 ★★ **1920, \$2 Lake & Black, #547a** \$600  
N.h., beautiful copy, Grade 95 extremely fine to superb, 2001 P.F., 2008 P.S.E. certs. Scott Stamp Values \$1,750 *only 2 graded higher* ..... Est. \$800/1,000

*1922-1925 Regular Issue*

802 ★★☐ **4¢, 25¢, 50¢, \$1 and \$2, Blocks of 4, #556, 568, 570, 571, 572** Web \$200  
N.h., very well centered, very fine. Scott \$850 Est. \$300/400



803 ★★ **6¢ Red Orange, #558** \$100  
N.h., extremely fine to superb Grade 95, 2017 P.S.E. cert. Scott Stamp Values \$300 ..... Est. \$150/180

804 ★★☐ **9¢, Plate Block of 6, #561** Web \$80  
N.h., wide side pl. #15238, natural margin wrinkle, fine to very fine. Scott \$375 ..... Est. \$120/150

805 ★★☐ **30¢, Plate Block of 6, #569** Web \$90  
N.h., narrow side pl. #17446, generally fine to very fine. Scott \$475 ..... Est. \$130/160

806 ★☐ **\$1, Plate Block of 6, #571** Web \$70  
Large top pl. #18680 hinged in margin, stamps n.h., couple of gum skips, otherwise fine to very fine. Scott \$300 ..... Est. \$100/130



807 ★★☐ **\$2, Block of 4, #572** \$100  
N.h., very nicely centered, very fine. Scott \$480 Est. \$150/200



808 ★★□ **\$2, Plate Block of 6, #572** *Web* **\$150**  
 N.h., bottom #14306, couple minor gum skips, fine to very fine. Scott \$1,000 ..... Est. \$250/300



809 ★★□ **\$5, Centerline Block of 4, #573** **\$200**  
 N.h., very fine. Scott \$825 ..... Est. \$300/400



810 ★★□ **\$5, Plate Block of 8, #573** **\$400**  
 N.h., large top with pl. #F14326 and F14327, fine to very fine. Scott \$2,650 ..... Est. \$600/700



811 ★□ **2c Rotary Coil Waste, Plate Block of 4, #579** **\$100**  
 L.h., small top with star and pl. #14174, fine. Scott \$550 ..... Est. \$150/200

812 ★□ **1923-26, Rotary Definitives, Perf 10 Set, Plate Blocks of 4, #581-591** **\$300**  
 Most l.h., generally fine to very fine. Scott \$2,580 ..... Est. \$400/500

813 ★★ **1923, 1c Rotary Accumulation, #581** *Web* **\$300**  
 N.h., over 200 incl. one full sheet with perf separations, and multiples, generally fine to very fine. Scott \$4,000+ ..... Est. \$400/500

814 ★★□ **1925, 1½c Rotary Accumulation, #582** *Web* **\$150**  
 About 200 mostly n.h. in multiples on stockpage, generally fine to very fine. Scott \$2,000+ ..... Est. \$200/300

815 ★★★ **1924, 2c Rotary Plate # Single Collection, #583** *Web* **\$200**  
 400 to 500, by pl. #, spot check shows mostly o.g. with occasional n.h., some better numbers and four corner numbers, generally fine to very fine ..... Est. \$300/400



816 ★★ **1929, 2c Horizontal Coil, Type II, Line Pair, #599A** **\$150**  
 N.h., fine. Scott \$1,350 ..... Est. \$200/250

817 ★★□ **1924, Huguenot-Walloon Set, Complete Sheets, #614-616** *Web* **\$300**  
 N.h., 1¢ sheet in two parts not affecting pl. blocks, fine to very fine. Brookman \$3,400 (as sheets). Scott \$3,000 ..... Est. \$450/600

*1926 White Plains*

818 ★★□ **Souvenir Sheet of 25, #630** *Web* **\$150**  
 N.h., well centered, overall very fine. Scott \$575 ..... Est. \$200/250

819 ★★□ **Souvenir Sheet of 25, #630** *Web* **\$140**  
 N.h., slight separations, fine to very fine. Scott \$575 ..... Est. \$200/250

820 ★★□ **Souvenir Sheet of 25, #630** *Web* **\$130**  
 N.h., fine to very fine. Scott \$575 ..... Est. \$150/200

821 ★★□ **Souvenir Sheet of 25, #630** *Web* **\$130**  
 N.h., fine to very fine. Scott \$575 ..... Est. \$150/200

822 ★□ **Souvenir Sheet of 25, #630** *Web* **\$100**  
 L.h., fine to very fine. Scott \$325 ..... Est. \$120/150



823 ★★ **1928, 2c Rotary, Type II, #634A** **\$100**  
 N.h., fine to very fine. Scott \$600 ..... Est. \$150/200

824 ★★ **1928, 2c Rotary, Type II, #634A** **\$100**  
 N.h., pl. #19644 single, fine to very fine. Scott \$600+ ..... Est. \$150/200

Lot Description Start Bid Lot Description Start Bid



825 ★★★□ **1929, Kansas-Nebraska Complete, Plate Blocks of 4, #658-679 \$700**  
N.h. to o.g., nice balanced set with #667 (2), generally fine to very fine. Scott \$6,850 ..... Est. \$1,000/1,200

826 ★★□ **1929, 8¢ Kansas, Plate Block of 4, #666 Web \$150**  
N.h., pl. #18191, fine to very fine. Scott \$925 Est. \$200/250

827 ★★★□ **1929 1¢ to 4¢ Nebraska Varieties, #670-671 Web \$140**  
1½¢, 2¢, 3¢ widely spaced overprint with first two pairs of each n.h. in blocks of 20, 3¢ l.h. in block of 6, 1¢, no period in n.h. block of 4, 4¢ with minute trace of stop in one, fine to very fine. Scott \$660 + (hinged) ..... Est. \$200/250

828 ★★□ **1929, 8¢ Nebraska, Plate Block of 4, #677 Web \$100**  
N.h., pl. #18191. Scott \$550 ..... Est. \$150/200



829 ★ **1930, 2¢ Von Steuben, Imperf, #689a \$350**  
L.h., large margins to just clear at right, fine to very fine, photocopy of 1990 P.F. cert. for block. Scott \$2,000, *only one pane of 100 sold* ..... Est. \$500/600

830 ★★□ **1934, National Parks Complete, Perfed, Sheets of 50, #740-749 \$200**  
N.h., fine to very fine. Brookman \$1,030 ..... Est. \$300/350

831 ★★ **1934, 2¢ Parks, Imperf Horizontally, Vertical Pair, #741a \$350**  
N.h., far better centering than typically seen, bright color on fresh white paper, very fine, 1994 P.F. cert. Scott \$1,450, *only 2-3 panes sold* ..... Est. \$500/600

832 (★) **1935 Farley Souvenir Sheets, Uncut Sheets, #766-770 \$350**  
Ungummed, few minor edge wrinkles, Fine to Very Fine. Scott \$2,100 ..... Est. \$500/600

1938 Presidential Issue

833 ★○ **½¢-\$5 Set Complete, #803-834 \$100**  
N.h., on pages, with singles, blocks, pl. blocks to \$2, coils, few used, dupl., mint singles to \$5, etc., fine to very fine ..... Est. \$150/200

834 ☒ **10¢ on \$10 Postal Saving Certificate of Deposit, #815 Web \$150**  
Tied by Jul 26 1954 cancel for the penalty for early withdrawal, Saving System cert issued Stamford Con. 2 Jul 1954 that has been folded, scare item, nice exhibit item, very fine appearance ..... Est. \$200/300



835 ★★ **\$1 Imperf Horizontally, Vertical Block of 4, #832a \$400**  
N.h., pencil notations on reverse, "minor diagonal gum bends", fine to very fine, 2017 P.S.A.G. cert. Scott \$2,200 + ..... Est. \$500/700

836 ★★□ **\$5 Carmine & Black, Plate Block of 4, #834 Web \$150**  
N.h., gum skips, rare pl. # 24481 and F23476, very fine. Durland \$1,000 ..... Est. \$250/300



837 ★★ **\$5 Red Brown & Black Shade, #834a \$700**  
N.h., deep colors, fine to very fine, 2014 and 1995 P.F. certs. Scott \$3,000 *very rare* ..... Est. \$1,000/1,200



Lot Description Start Bid Lot Description Start Bid

838  **1939, 3c Baseball Centennial Select Group, #855** *Web* **\$400**

Seven lots consisting of; Koment cachet (Planty #855-59 \$900) autographed by Pee Wee Reese, Pete Reiser, Augie Galan & Amos Otis, 1st F.N. Newton handpainted cachet (Planty CV #855-69 900 for FDC) on 2nd day cover (6/13/39 Washington, DC) autographed by players Stan Musial & Nate Colbert, Clarence E. Reid cachet on plain envelope (Planty CV #855-74 \$700) autographed by players Sal Maglie, Ralph Terry & Virgil Trucks with handwritten letter signed by Trucks inside, envelope foxing, unknown cachet maker (Planty #855-95 \$750) autographed by Dick Schofield Sr & Jr, faint envelope foxing on back, unknown cachet maker (Planty #855-103 \$750) autographed by Chicago Cubs Ron Santo, W.S. Beardsley cachet (Planty #855-104 \$800) autographed by pitcher Orel Hershiser and 1st Gilbert Brown cachet (Planty #855-183 \$1200) autographed by Tom Browning, fine to very fine. Planty \$6,000 ..... Est. \$600/800



843  **1971, 8c Emily Dickinson, Black & Olive Omitted, #1436a** **\$100**  
N.h., very fine. Scott \$500, *only 150 sold* ..... Est. \$150/200

844  **1972, 8c Tom Sawyer, Red & Black Omitted, #1470b** **\$140**  
Bend, very fine. Scott \$800, *only 150 sold* ..... Est. \$200/250

839  **1940, Famous Americans, #859-893** **\$450**  
N.h., complete sheets of 50, fine to very fine. Brookman \$2,800 ..... Est. \$600/800

845  **1984, 20c Truman, #1862** *Web* **\$300**  
N.h., freak full sheet with horiz. perfs through mostly middle of design, very fine and unusual ..... Est. \$350/450

840  **1942, 5c Chinese Resistance Sheet, #906** **\$100**  
N.h., very fine. Scott \$200+ ..... Est. \$150/200

841  **1942, 5c Chinese Resistance Cover Collection, #906** **\$100**  
35 total all used in period incl., censored incl. one to China, FDC from U.S. Senate, Registered to Foreign destinations, return to senders, one with war savings stamp used as postage and many other interesting items, worth a look ..... Est. \$150/200



846  **1981 (20c) Christmas, Imperf Horizontally, Vertical Pair, #1940b** **\$200**  
N.h., good margins all around, rough cut clipped perfs at sides, otherwise fine to very fine. Scott \$2,000, *only 10-15 pairs sold* ..... Est. \$300/400

847  **1987, 22c Raccoon, Red Omitted, #2331b** **\$550**  
N.h., very fine, 2004 P.S.E. cert. Scott \$2,000 Est. \$700/900



842  **1969, 6c Baseball, Black Omitted, Block of 4, #1381a** **\$350**  
N.h., corner, 2017 P.S.A.G. cert. Scott \$2,000+ *only 150-200 sold* ..... Est. \$500/700



848  **1988, 25c Love, Imperf, Pair, #2378a** **\$350**  
N.h., large margins to close at left, fine to very fine. Scott \$1,500 ..... Est. \$500/600

"Web" indicates that image(s) will be found on our website, [www.harmershou.com](http://www.harmershou.com).

Lot Description Start Bid Lot Description Start Bid



- 849 ★★□ **1991, 29¢ Wood Duck, Black “29 USA” Imperf, Block of 4, #2484 var** **\$150**  
N.h., unlisted, fine to very fine ..... Est. \$250/350
- 850 ★★□ **1994, 29¢ Legends of the West, Recalled, #2870** **\$550**  
17 n.h. copies all with blue envelopes, fine to very fine. Scott \$3,740 ..... Est. \$800/1,000
- 851 ★★□ **1994, 29¢ Legends of the West, Recalled, #2870** **\$300**  
10 n.h. copies all with blue envelopes, fine to very fine. Scott \$2,200 ..... Est. \$500/600
- 852 ★★ **1999, 33¢ Flag & City Coil, Small Date, No Die Cutting, #3281e** **\$1,300**  
N.h., partial roll of 98, #5555, 1st copy in roll damaged (not counted), occasional aging affecting a few copies and one pl. # strip, fine to very fine overall ..... Est. \$1,500/2,000

**Airpost**

*1918 Issue*



- 853 →★★□ **First Issue Complete, Blocks of 4, #C1-C3** **\$200**  
N.h., C2 and C3 very nice centering, C3 should be gradable, fine to very fine. Scott \$1,440 ..... Est. \$300/400
- 854 →★★□ **6¢, Plate Block of 6, #C1** *Web* **\$150**  
N.h., small top pl. #9155, small perf separations at top, otherwise very fine. Scott \$1,000 ..... Est. \$200/250
- 855 →★★□ **6¢, Plate Block of 6, #C1** *Web* **\$150**  
L.h., small top pl. #9115. Scott \$700 ..... Est. \$200/250
- 856 →★★□ **6¢, Block of 36, #C1** *Web* **\$450**  
N.h., incl. left arrow block of 4, Fine. Scott \$4,320+ ..... Est. \$600/800

- 857 →★★□ **16¢, Plate Block of 6, #C2** *Web* **\$150**  
L.h., small top pl. #8900, fine to very fine. Scott \$900 ..... Est. \$250/350



- 858 →★★ **24¢ Grounded Plane Variety, #C3 var.** **\$100**  
O.g., fine ..... Est. \$200/300
- 859 →★★□ **24¢, Block of 12, #C3** *Web* **\$200**  
N.h., with arrow and pl. number, natural gum creases, fine to very fine. Scott \$1,560 as singles ..... Est. \$300/400



- 860 →★★□ **24¢, Plate Block of 12, #C3** **\$300**  
N.h., with two Tops and pl. #8493 and 8492, gum skips, weak perfs and owners handstamps, otherwise fine to very fine. Scott \$2,000 ..... Est. \$400/500

*1923 Issue*

- 861 →★★□ **Second Issue Complete, Blocks of 4, #C4-C6** *Web* **\$150**  
Top two of C4 and C5 o.g. (h.r.), C6 top two l.h., bottoms of all n.h., very fine. Scott \$855 ..... Est. \$200/300
- 862 →★★□ **8¢ Plate Block, Block of 6, #C4** *Web* **\$70**  
N.h., side #14824 pl. block of 8, fine to very fine. Scott \$540 ..... Est. \$120/140



- 863 →★★□ **16¢, Plate Block of 6, #C5** **\$300**  
N.h., wide side pl. #14829, very fine. Scott \$2,150 ..... Est. \$400/500
- 864 →★★□ **16¢, Plate Block of 6, #C5** **\$300**  
N.h., wide side with pl. #14831, very fine, 2009 P.F. cert. Scott \$2,150 ..... Est. \$400/500



Lot Description Start Bid Lot Description Start Bid



- 865 →★★□ 24c, Plate Block of 6, #C6 \$250  
N.h., large bottom pl. #14841, staple holes in margin, fine.  
Scott \$2,750 ..... Est. \$300/400
- 866 →★★□ 24c, Plate Block of 6, #C6 \$200  
N.h., large bottom pl. #14843, staple holes in margin, fine to  
very fine. Scott \$2,750 ..... Est. \$300/400
- 867 →★★□ 24c, Plate Block of 6, #C6 Web \$200  
O.g., large bottom pl. #14842, fine to very fine. Scott \$1,850  
..... Est. \$300/400
- 868 →B★★ 1928, 10c Lindbergh, #C10a \$150  
N.h., 5 complete booklets, fine to very fine. Scott \$1,150  
..... Est. \$200/250

1930 Graf Zeppelin Issue



- 869 →★★ Set Complete, #C13-C15 \$750  
N.h., nice balanced set, very fine. Scott \$1,750 . Est. \$1,000/1,200



- 870 →★★ Set Complete, #C13-C15 \$700  
N.h., very fine, 1999 P.F. cert. for #C14. Scott \$1,750  
..... Est. \$900/1,000



- 871 →★★ Set Complete, #C13-C15 \$600  
N.h., fine to very fine. Scott \$1,750 ..... Est. \$800/900



- 872 →★★★ Set Complete, #C13-C15 \$500  
O.g., #C15 n.h., fine to very fine. Scott \$1,480 ... Est. \$600/700



- 873 →★★★ Set Complete, #C13-C15 \$450  
C13 n.h., C14 o.g., C15 l.h., fine. Scott \$1,175 ... Est. \$600/700



- 874 →○ Set Complete, #C13-C15 \$450  
Used, 65c on piece with small crease, 65c, \$2.60 well  
centered, fine to very fine. Scott \$1,140 ..... Est. \$500/550

875 →☒ **Set on 3 Flight Covers, #C13-C15** *Web* **\$450**  
 Well centered (65¢ fine), 65¢ to Spain and \$1.30 to Denver on postal cards, \$2.60 large cover with creasing at left, fine to very fine set. Scott \$1,110 ..... Est. \$500/600



876 →★★ **65¢ Green, #C13** **\$120**  
 N.h., gum bends, fine to very fine. Scott \$275 . Est. \$140/180

877 →★★ **\$1.30 Brown, #C14** **\$300**  
 N.h., gum bends, fine to very fine. Scott \$650 . Est. \$350/400



878 →★★ **\$1.30 Brown, #C14** **\$240**  
 N.h., light gum crease, well centered, fine. Scott \$650 ..... Est. \$300/400

879 →★ **\$1.30 Brown, #C14** **\$230**  
 Very l.h., very fine Grade 80, 2017 P.F. cert. Scott \$375 ..... Est. \$250/300



880 →☒ **\$1.30 on FDC, #C14** **\$200**  
 Fine to very fine tied by Washington D.C. APR 19 1930 cds, very fine and attractive. Scott \$900 ..... Est. \$300/400



881 →★★ **\$2.60 Blue, #C15** **\$425**  
 N.h., "small crease", perfectly centered, extremely fine appearance, 2017 P.S.E. cert. Scott \$975 ..... Est. \$500/600

882 →○ **\$2.60 Blue, #C15** **\$200**  
 Used, Grade 85 very fine to extremely fine, 2008 P.S.E. cert. Scott Stamp Values \$675 ..... Est. \$300/400

883 →★★☐ **1933, 50¢ "Chicago", Plate Block of 6, #C18** *Web* **\$200**  
 N.h., small bottom pl. #21177, fine to very fine. Scott \$700 ..... Est. \$250/300

884 →☒ **1933, 50¢ "Chicago" FDC Lot, #C18** *Web* **\$200**  
 Five total from all five cities, tied with appropriate cds, all cacheted except for Washington DC, one with block of 4, generally fine to very fine. Scott \$1,175+ ..... Est. \$300/400



885 →★★★☐ **1938, 6¢ Eagle, Ultramarine & Carmine Color Error, Centerline Block of 4, #C23c** **\$250**  
 Bottom two n.h., top two very l.h., with normal gum crease, very fine, signed Bloch. Scott \$1,200 ..... Est. \$350/450

886 →☒ **1947 Gateway Series Postal History Collection, #C34-C36** *Web* **\$200**  
 About 80 in a specialized collection all commercial to 50 countries or Colonies mailed from 1947 to the period extending into the Cold War, uses incl. Special Delivery, scarce registered receipts for international Airmail paid by stamps, censored mail, post war Berlin mail to Zones, remailed international, fraudulent mail, many interesting destinations such as. Pitcairn, Tahiti, Papua New Guinea and many more, great lot for the specialist or nucleus of a strong exhibit, fine ..... Est. \$300/500

887 →☒ **1953, 6¢ Powered Flight Cover Collection, #C47** *Web* **\$150**  
 29 total with Possessions uses from Virgin Island and Guam, 1957 from Saigon reflecting early military involvement in Vietnam, Special Delivery to Mexico and Canada, invalid uses, registered letter, one sent from Alaska Territory, damaged mail, Official Seals, dual franking and more, great for a specialist or great start for an exhibit, fine Est. \$200/300



888 ★ **Special Delivery: 1885, 10¢, #E1** **\$100**  
 O.g. (h.r.), unpunched perf hole at bottom, fine to very fine. Scott \$550 ..... Est. \$150/200

889 ★★ **Special Delivery: 1902, 10¢, #E6** **\$500**  
 N.h., Grade 85 very fine to extremely fine, 2017 P.S.A.G. cert. Scott Stamp Values \$800 ..... Est. \$500/550



- | <i>Lot</i> | <i>Description</i>  | <i>Start Bid</i>                   |
|------------|---|------------------------------------|
| 890 ★★□    | <b>Special Delivery: 1917, 10c, Plate Block of 6, #E11</b><br>N.h., side pl. #11816, pink back, excellent color, overall very fine. Scott \$340 ..... | <i>Web</i> \$100<br>Est. \$120/140 |
| 891 ★★□    | <b>Special Delivery: 1925, 15c, Plate Block of 6, #E13</b><br>N.h., narrow side pl. #16833, fine to very fine. Scott \$700 .....                      | <i>Web</i> \$150<br>Est. \$200/300 |

*Postage Dues*

- |       |  |                                    |
|-------|--|------------------------------------|
| 892 P | <b>1879, 2c and 3c Blue, Trial Color Large Die Proofs, #J2TC1ah, J3TC1ah</b><br>Both reduced, 2c 2 x 1¼, 3c 1¼ x 2, generally fine to very fine. Scott \$1,000 ..... | <i>Web</i> \$150<br>Est. \$200/300 |
|-------|--|------------------------------------|



- |         |  |                           |
|---------|--|---------------------------|
| 893 ★   | <b>1879, 10c Brown, #J5</b><br>O.g. (small h.r.), fresh, lovely fine appearance. Scott \$900 .....   | \$160<br>Est. \$250/300   |
| 894 (★) | <b>1879, 30c Deep Brown, Special Printing, #J13</b><br>Unused, off center but rare, undated P.S.E. cert. Scott \$7,000 179 exist, majority with faults ..... | \$500<br>Est. \$750/1,000 |
| 895 ★★  | <b>1884, 30c Red Brown, #J20</b><br>N.h., nice color, well centered, very fine. Scott \$500 .....  | \$100<br>Est. \$150/200   |



- |        |   |                         |
|--------|---|-------------------------|
| 896 ★★ | <b>1884, 30c Red Brown, #J20</b><br>N.h., nice impression and color, very fine, 2000 P.S.E. cert. Scott \$500 ..... | \$100<br>Est. \$150/200 |
| 897 ★  | <b>1884, 50c Red Brown, #J21</b><br>O.g., fine to very fine, 1980 P.F. cert. Scott \$1,800 .....                    | \$300<br>Est. \$400/500 |
| 898 ★  | <b>1884, 50c Red Brown, #J21</b><br>Full o.g., fine and attractive. Scott \$1,800 .....                             | \$280<br>Est. \$400/500 |






- |          |   |                             |
|----------|---|-----------------------------|
| 902 ★★★□ | <b>1891, 50c Bright Claret, Block of 4, #J28</b><br>Fresh with great color, three n.h. and lower right very l.h., fine or better, 2017 P.S.A.G. cert. Scott \$5,850 ..... | \$700<br>Est. \$1,000/1,300 |
|----------|---|-----------------------------|



- |         |  |                                    |
|---------|--|------------------------------------|
| 903 ★   | <b>1894, 1c Vermilion, #J29</b><br>O.g. (h.r.), top left corner added, rich color, fine to very fine appearance. Scott \$2,250 ..... | \$150<br>Est. \$250/300            |
| 904 ★★  | <b>1894, 2c Deep Claret, #J32</b><br>N.h., marginal, immaculate and very fine. Scott \$240+ .....                                    | <i>Web</i> \$80<br>Est. \$100/140  |
| 905 ★★□ | <b>1895, 10c Deep Claret, Block of 4, #J42</b><br>N.h., two with bends, fresh, fine. Scott \$1,120 .....                             | <i>Web</i> \$140<br>Est. \$200/250 |

Lot Description Start Bid Lot Description Start Bid

906  **1914, 3c Carmine Lake, Block of 20, #J54** *Web* **\$140**  
Used, centered top, rich color. Scott \$1,500 + (singles)  
..... Est. \$200/250



913 ★ **Sets Complete, #K1-K18** **\$200**  
O.g. few low values n.h., fine. Scott \$2,255 ..... Est. \$300/400



907 ★★ **1914, 30c Carmine Lake, #J57** **\$100**  
N.h., fine to very fine, 1990 P.F. cert. Scott \$525 Est. \$150/180

908 ★★ **1917, 1c to 50c Complete, #J61-J67** **\$150**  
N.h., very nice set, 5c and 50c deep claret, 1c l.h., 5c offset, very fine to extremely fine. Scott \$766 ..... Est. \$250/350

909 ★★ **1917, 30c Deep Claret, #J66a** **\$100**  
N.h., extremely fine Grade 90, 2017 P.S.E. cert. Scott Stamp Values \$350, only 10 graded higher ..... Est. \$150/200

914 ★ **Sets Complete, #K1-K16** **\$550**  
O.g., fresh and decent centering. Scott \$2,045  
..... Est. \$600/800

915 ★★  **8c on 4c, Block of 6, #K4** *Web* **\$150**  
N.h., fine to very fine. Scott \$840 ..... Est. \$200/300

916 ★  **10c on 5c, Plate Block of 6, #K5** *Web* **\$150**  
L.h., wide side pl. #9116, tiny bit of rust in the selvage staple holes, otherwise fine to very fine. Scott \$600 ... Est. \$200/300



910 ★★ **1959, 7c Dull Gum, Pair, #J95 var** **\$200**  
N.h., very fine. Scott \$1,150 ..... Est. \$300/400



917 ★★ **24c on 12c Brown Carmine, #K11** **\$400**  
N.h., should grade very high, extremely fine, 2017 P.S.E. cert. Scott \$190 ..... Est. \$425/450

918 ★★ **60c on 30c Orange Red, #K14** **\$100**  
N.h., very fine to extremely fine. Scott \$280+ Est. \$150/200

Offices in China

1919-22 Issues



911 ★ **Sets Complete, #K1-K18** **\$400**  
Mostly l.h., well balance set with nice centering, #K1 small perf thin, otherwise very fine. Scott \$2,110 ..... Est. \$600/800

912 ★ **Sets Complete, #K1-K18** **\$350**  
L.h. to o.g., K8 small thin, \$2 overprint shifted high, fresh, a fine set. Scott \$2,110 ..... Est. \$500/650



919 ★ **\$2 on \$1 Violet Brown, #K16** **\$150**  
O.g., Grade 85 very fine to extremely fine, 1991 P.F., 2006, 2015 P.S.E. certs. Scott Stamp Values \$500 ... Est. \$250/300

920 ★ **\$2 on \$1 Violet Brown, #K16** **\$110**  
O.g., rich color, very fine. Scott \$450 ..... Est. \$150/200



Lot Description Start Bid Lot Description Start Bid

Officials



- 921 ★ **Executive Dept., 1873, 6c, #O13** \$200  
O.g., fine to very fine, 1991 P.F. cert. Scott \$900  
..... Est. \$300/400
- 922 ★ **Executive Dept., 1873, 10c, #O14** \$250  
O.g., black mark on reverse, fresh, fine to very fine, 2017  
P.S.E. cert. Scott \$1,200 ..... Est. \$350/450
- 923 ★ **Navy Dept., 1873, 90c, #O45** \$200  
O.g., fine to very fine, 2017 P.S.E. cert. Scott \$1,050  
..... Est. \$300/400
- 924 ★★□ **Post Office Dept., 1873, 12c,**  
**Block of 4, #O52** Web \$150  
N.h. (bottom right, top left), l.h., well centered, rich color,  
weak perfs, very fine and attractive. Scott \$790+  
..... Est. \$250/300



- 927 ★ **\$2 Green & Black, #O68** \$350  
O.g. (h.r.), rich color, fine and attractive, 2017 P.S.E. cert.  
Scott \$1,750 ..... Est. \$450/550
- 928 (★) **\$2 Green & Black, #O68** \$150  
Unused, few wrinkles, very well centered, fresh, very fine  
stamp. Scott \$800 ..... Est. \$250/350



State Department



- 925 ★ **90c Dark Green, #O67** \$200  
O.g., nice impression and color, fine to very fine, 2008 P.S.E.  
cert. Scott \$1,050 ..... Est. \$270/325



- 926 ★ **90c Dark Green, #O67** \$150  
O.g., "small crease at right", fresh, fine overall, 2017 P.S.E.  
cert. Scott \$1,050 ..... Est. \$250/300



- 929 ★ **\$5 Green & Black, #O69** \$700  
O.g., "diagonal crease and 4 small pin holes", fresh, lovely  
fine appearance, 2017 P.S.E. cert. Scott \$7,500  
..... Est. \$1,000/1,400

- 930 ★ **\$10 Green & Black, #O70** \$400  
Full o.g., "reperfed at lower right", fresh, just fine, 2017  
P.S.E. cert. Scott \$4,500 ..... Est. \$600/800

- 931 ★ **\$20 Green & Black, #O71** \$650  
Full o.g., centered right, nice color, fine and scarce, 2017  
P.S.E. cert. Scott \$5,000 ..... Est. \$1,000/1,400

Lot Description Start Bid Lot Description Start Bid



932 S Treasury Dept., 1875 Special Printing, 7c Overprinted "Specimen", #O76SD \$250  
 Ungummed, excellent color, overall very fine, 2017 P.S.E. cert. Scott \$950, 198 sold ..... Est. \$350/450



936 ★□ War Dept., 1873, 6c, Block of 4, #O86 \$550  
 L.h. to o.g. from reinforcing, very fresh, fine to very fine. Scott \$3,000 ..... Est. \$700/900



933 ★□ Treasury Dept., 1873, 12c, Block of 4, #O78 \$250  
 Dist o.g. with some gum tone spots, punched perf, excellent centering, fine to very fine. Scott \$1,400 ..... Est. \$300/400

Nicest of the Two Certified Copies



937 ○ Interior Dept., 1879, 24c, #O103 \$2,000  
 Lightly cancelled, "tiny faults", fresh, fine appearing, previously unrecorded 2017 P.S.E. cert. Scott \$6,250 only other copy that has a recent cert is from Siegel Higgins auction in 2016 which has light corner creasing, few tiny margin tears ..... Est. \$3,000/4,000



934 ★★ Treasury Dept., 1873, 15c, Pair, #O79 \$200  
 N.h., rich color, fine to very fine. Scott \$1,300 Est. \$300/400



938 ★ Treasury Dept., 1879, 30c, #O112 \$300  
 O.g., fine and scarce, 1989 P.F. cert. Scott \$2,400 ..... Est. \$400/500



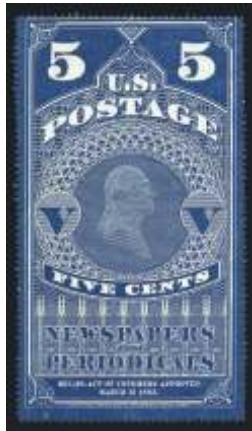
935 S War Dept., 1875 Special Printing, 1c Overprinted "Sepcimen" (Error), #O83SDa \$350  
 Ungummed, fine, 2017 P.S.A.G. cert. Scott \$3,000, estimated only 96 sold ..... Est. \$500/600

We are now accepting consignments for the 2018 APS StampShow auction in Columbus, Ohio.



Lot Description Start Bid Lot Description Start Bid

Newspaper Stamps



939 (★) **1865, 5c Dark Blue, #PR1** \$150  
 Ungummed, "inking flaw in bottom margin", fine, 2004 P.F. cert. Scott \$750 ..... Est. \$250/300



943 ★★ **1879, \$3 Red Vermilion, #PR72** \$650  
 N.h., Grade 90 extremely fine, 2017 P.S.A.G. cert. Scott Stamp Values \$1,250 as hinged ..... Est. \$800/1,000



944 ★ **1879, \$24 Dark Violet, #PR76** \$200  
 Full o.g., rich color, fine to very fine. Scott \$800 ..... Est. \$250/300

945 ★★ **Parcel Post: 1913, \$1, #Q12** Web \$100  
 N.h., fine to very fine. Scott \$625 ..... Est. \$120/150



940 (★) **1875 Special Printing, 48c Pale Rose, #PR43** \$400  
 Ungummed, centered left, excellent color, fine and rare, 1995 P.F., 2017 P.S.E. certs. Scott \$3,750, 268 sold ..... Est. \$600/800



941 (★) **1875 Special Printing, 72c Pale Rose, #PR45** \$1,000  
 Ungummed, reperforated at bottom, otherwise fine to very fine, 2008 P.F. cert. Scott \$4,500, only 174 sold, rare ..... Est. \$1,500/2,000



946 ★★ **Parcel Post Postage Due: 1913 Complete, #JQ1-JQ5** \$150  
 N.h., nice balanced set, very fine. Scott \$642 .. Est. \$200/300



947 ★★ **Parcel Post Postage Due: 1913, 10c, #JQ4** \$80  
 N.h., fresh, fine to very fine. Scott \$275 ..... Est. \$100/120




948 ○ **Postal Card: 1873, 1c Brown on Buff, #UX3a** \$150  
 Unwatermarked, used (as all are), tied with Aug 4 Troy N.Y. cds, backstamp with New York Aug. 5 and blue Aug 6th 1874 receiving cancels, fine to very fine. Scott \$775 ..... Est. \$250/300



942 (★) **1875 Special Printing, 96c Pale Rose, #PR47** \$1,000  
 Ungummed, "reperfed at bottom", centered left, fine and rare, 1992 P.F., 2017 P.S.E. certs. Scott \$8,500, 141 sold ..... Est. \$1,400/1,800

*Lot Description Start Bid Lot Description Start Bid*

949  **Postal Card: 1873, 1c Brown on Buff, #UX3a** *Web* **\$150**  
 Unwatermarked, used (as all are), SEP 20 (docketed 1875) cds, to Portland Maine, slight aging, otherwise fine. Scott \$775 *rarely seen* ..... Est. \$250/300



950 ★ **Postal Card: 1964, 4c Customs Anniversary, Blue Omitted, #UX50a** **\$150**  
 Very fine. Scott \$550 ..... Est. \$200/300

956 ○ **1864, 5c Proprietary, Perfed, #R29** **\$200**  
 Ms. cancel, fine. Scott \$1,000 ..... Est. \$300/350

*Revenues*

957 ★ **1862, 10c Bill of Lading, Imperf, Pair, #R32a** **\$120**  
 Appears to be unused, very fine. Scott \$300 .... Est. \$150/200



951 ○ **1862, 1c Telegraph, Imperf, #R4a** **\$130**  
 Ms. cancel, huge margins on threes sides, just touching at top, fine. Scott \$800 ..... Est. \$200/250

952 ○ **1862, 2c Proprietary, Imperf, #R13a** **\$350**  
 Large margins, bright shade, ms. cancel, very fine to extremely fine. Scott \$1,200 ..... Est. \$500/600

953 ○ **1862, 2c Proprietary, Perfed, #R13c** **\$150**  
 American Card Co. 1863 cancel, fine to very fine, *rare cancel* ..... Est. \$200/250



958 ○ **1862, 10c Certificate, Imperf, #R33a** **\$200**  
 Ms. cancel, middle stamp from horizontal strip of 3, photocopy of strip enclosed, very fine. Scott \$400 ..... Est. \$250/300

959 ○ **1862, 10c Power of Attorney, Imperf, Pair, #R37a** **\$300**  
 Ms. cancel, large to just touching at right, fine to very fine. Scott \$2,700 ..... Est. \$400/500

954 ○ **1862, 3c Proprietary, Part Perf, #R18b** **\$150**  
 Ms. cancel, from block of four, fine, *photocopy of block enclosed*. Scott \$1,250 ..... Est. \$250/300

955 ○ **1863, 4c Playing Cards, Perfed, #R21c** **\$100**  
 Nice cancel, small thin, otherwise extremely fine. Scott \$700 ..... Est. \$150/200



960 ○ **1862, 20c Foreign Exchange, Imperf, Pair, #R41a** **\$100**  
 Ms. cancel, full margins to just touching on bottom left, very fine. Scott \$400 ..... Est. \$150/200



Lot	Description	Start Bid	Lot	Description	Start Bid
961 ○	<b>1862, 25¢ Bond, Imperf, Pair, #R43a</b> <i>Web</i> <b>\$100</b> Ms. cancel, large margin all around, small hole in left stamp, right stamps would make very fine single. Scott \$750 ..... Est. \$150/200		966 ○	<b>1862, \$2 Conveyance, \$3 Charter Party Imperf, #R81a, R85a</b> <i>Web</i> <b>\$200</b> Huge to large margins all around, very fine. Scott \$450 ..... Est. \$250/300	



967 ○	<b>1863, \$2 Probate of Will, Imperf, #R83a</b> <b>\$500</b> Attractive SON "Wood" JUN 2 1863 cancel, margins to cutting at right, fine overall, <i>ex Sheriff</i> 1993 P.F. cert. Scott \$7,750, <i>scarce</i> ..... Est. \$800/1,000
-------	---

962 ○	<b>1862, 25¢ Protest, Part Perf, Pair, #R49b</b> <b>\$450</b> Ms. cancel, huge imperf margins, typical centering, small faults as normal, "bottom stamps with a horizontal crease at top ending in a small tear at left, the top stamp with a diagonal crease at bottom left", fine for this, 2005 P.F. cert. Scott \$2,500 ..... Est. \$700/800
-------	---

963 ○	<b>1862, 60¢ Inland Exchange, Imperf, Strip of 3, #R64a</b> <i>Web</i> <b>\$100</b> Neat ms. cancel, ample to close margins all around, faint crease at top, otherwise very fine. Scott \$510 ... Est. \$150/200
-------	---

964 (★)	<b>1862, \$1 Lease, Imperf, Strip of 5, #R70a</b> <i>Web</i> <b>\$150</b> Unused, very fine. Scott \$350 + (as pairs) ..... Est. \$200/250
---------	---



968 ○	<b>1862, \$10 Mortgage, Imperf, #R95a</b> <b>\$350</b> Ms. cancel, clear at top to huge margins, fresh, very fine to extremely fine. Scott \$750 ..... Est. \$400/500
-------	--

969 ○	<b>1862, \$10 Probate of Will, Imperf, #R96a</b> <b>\$600</b> Faint ms. cancel, large margins all around, intense shade and impression, extremely fine. Scott \$3,500 ..... Est. \$800/1,000
-------	---

965 ○	<b>1863, \$1.60 Foreign Exchange, Imperf, #R79a</b> <b>\$600</b> Large to huge margins all around, fresh with neat head free ms. cancel, small shallow thin at right, extremely fine appearance. Scott \$1,500 ..... Est. \$700/900
-------	--

The live auction will be conducted through "Redpoint".  
Contact us for details.

Lot Description Start Bid Lot Description Start Bid



970 ○ **1862, \$10 Probate of Will, Imperf, #R96a \$550**  
 "Lightened manuscript cancel", appears unused, excellent margins all round, fresh, very fine or better appearance, 1993 P.F. cert. Scott \$3,500 ..... Est. \$800/1,000

971 ○ **1862, \$10 Probate of Will, Imperf, #R96a \$450**  
 Ms. cancel, irregular but large margins to just clear at top and bottom, fine to very fine. Scott \$3,500 ..... Est. \$600/750



972 ○ **1862, \$20 Probate of Will, Imperf, #R99a \$550**  
 Ms. cancel, clear to nice margins all round, sound, fine to very fine, 1981 P.F. cert. Scott \$3,500 ..... Est. \$800/1,000

973 ○ **1863, \$25 Mortgage Imperf, #R100a \$900**  
 Ms. cancel, large to huge margins all around, attractive pastel shade, very fine to extremely fine. Scott \$2,700 ..... Est. \$1,200/1,500

974 ○ **1863, \$50 U.S. Internal Revenue, Imperf, Pair, #R101a Web \$130**  
 Ms. cancel, clear to large margins all around, small stain at bottom left, small tear at top in margin, otherwise very fine. Scott \$750 ..... Est. \$200/300



975 ★□ **1871, Second Issue, 1¢, Block of 6, #R103 \$200**  
 Full o.g., fine, ex. Turner and Cunliffe . Scott \$695 as block and pair, scarce ..... Est. \$300/350



976 ○ **1871, Second Issue 10¢ Center Inverted, #R109a \$230**  
 "Lightened cancel and small thin at top", centered bottom, 2017 P.S.E. cert. Scott \$2,000, scarce ..... Est. \$300/400

977 ○ **1871, Second Issue 60¢, Pair, #R116 Web \$150**  
 Ms. cancel, fine. Scott \$550 ..... Est. \$200/250



978 ○ **1871, Second Issue \$3.50, Pair, #R126 \$300**  
 Ms. cancel, right stamp very well centered, very fine. Scott \$1,100, only 10+ horizontal pairs known and 1 vertical pair ..... Est. \$400/500

979 ○ **1871, Second Issue \$10, Pair, #R128 Web \$180**  
 Ms. cancel, fresh, fine. Scott \$550 ..... Est. \$200/250



Lot Description Start Bid Lot Description Start Bid



980 ○ **1871, Second Issue \$500 "Persian Rug", #R133 \$2,000**  
 "Cut (herringbone cancel, top right corner repaired)", decent centering, fine appearance, *census* #27-5 2017 P.S.E. cert. Scott \$17,500, *not seen on the market in many years, 210 sold* ..... Est. \$3,000/4,000



984 ★★ **Documentary, 1900, \$10 Gray, Pair, #R188 \$150**  
 N.h., well center, fresh, very fine. Scott \$500+ ... Est. \$200/250



985 ○ **Documentary, 1940, \$30, #R282 \$250**  
 Cut cancel, very fine. Scott \$500 ..... Est. \$300/350



981 (★) **1871, Third Issue 2¢ Vermilion & Black, Color Error, #R135a \$300**  
 Unused, fine, *ex. Morrissey* 2015 P.F. cert. Scott \$900 ..... Est. \$400/500

**Six Known With Manuscript Cancel**



986 ○ **Documentary, 1940, \$500, #R309 \$1,400**  
 Series #1025, ms. cancel, fresh, very fine and rare, *top copy in strip realized \$3105 in August APS auction 2017 P.S.E. cert for fourth and last copy (in strip of 4).* Scott \$5,000 ..... Est. \$2,000/2,500

982 ○ **1871, Third Issue 2¢ Vermilion & Black, Color Error, #R135a \$200**  
 Black cds, fine to very fine. Scott \$900 ..... Est. \$300/400

983 ○ **1874, 2¢ Fourth Issue, Center Inverted, #R151a \$200**  
 Ms. cancel, vignette slightly faded, fine. Scott \$800 ..... Est. \$300/350

*Until now, six others, including three with either cut or punched cancels, two with manuscript and one with both manuscript and handstamp cancels (margin trimmed), with this strip of 4, only 10+ known and with now 6 known with manuscript cancels only.*

<i>Lot</i>	<i>Description</i>	<i>Start Bid</i>	<i>Lot</i>	<i>Description</i>	<i>Start Bid</i>
------------	--------------------	------------------	------------	--------------------	------------------



- 987 ○ **Documentary, 1940, \$500, #R309**                    **\$900**  
 Series #1025, ms. cancel, "small crease", fresh, attractive very fine appearance, 2017 P.S.E. cert for third copy (in strip of 4). Scott \$5,000 ..... Est. \$1,200/1,500

*Until now, six others, including three with either cut or punched cancels, two with manuscript and one with both manuscript and handstamp cancels (margin trimmed), with this strip of 4, only 10+ known and with now 6 known with manuscript cancels only.*



- 988 ○ **Documentary, 1942, \$50, #R356**                    **\$350**  
 Series #5390, face-free ms. cancel, Very Fine, 2017 P.S.E. cert (for pair). Scott \$1,400 ..... Est. \$500/750

- 989 ○ **Documentary, 1952, \$5,000, #R618**                **\$250**  
 Cut cancel with thins, very fine appearance. Scott \$1,900 ..... Est. \$350/450

- 992 ○ **Documentary, 1954, \$10,000, Strip of 4, #R687**                    **\$650**  
 Cut and dated 1954 cancels, natural straight edge at right and at top and bottom. Scott \$4,000+ ..... Est. \$1,000/1,400



- 990 ○ **Documentary, 1953, \$2,500, #R651**                **\$800**  
 Nice cancel, uncut, fine to very fine, 2016 P.F. cert. Scott \$1,750 ..... Est. \$1,200/1,300



- 991 ○ **Documentary, 1954 \$10,000, #R687**                **\$300**  
 Used with staple holes, catalog as cut cancel, fine to very fine. Scott \$1,000 ..... Est. \$400/500

- 993 ○ **Documentary, 1956, \$5,000, #R704**                **\$750**  
 Handstamp cancel, uncut, fine to very fine. Scott \$2,000 ..... Est. \$900/1,200



Lot Description Start Bid Lot Description Start Bid



994 ○ **Proprietary: 1873, \$5, Violet Paper, #RB10a** **\$1,300**  
 1878 ms. cancel, "tiny tear at left...tiny scuff in the lower right", fresh for this, *Examples of the \$5.00 Proprietary Issue almost invariably have faults, due to the stamp's large size and the nature of its use* 2017 P.S.E. cert. Scott \$11,000 *Kingsley book contains a table showing 2,109 ordered and records only 119 copies extant, only 74 were sold on Violet paper, not seen on the market in many years* ..... Est. \$2,000/2,500



995 ○ **Proprietary, 1875, 5c, Silk Paper, #RB16a** **\$100**  
 W.M. Leslie cancel, one short perf at top, otherwise very fine. Scott \$200, + *scarce cancel* ..... Est. \$150/200

996 ★★□ **Proprietary, 1898, 5c, Hyphen-Hole Perf, Block of 4, #RB31p** *Web* **\$120**  
 Top pair. h.r. and bottom pair. n.h., very fine. Scott \$425 ..... Est. \$150/200

*Stock Transfer*



997 (★) **1918, \$60, #RD21** **\$100**  
 Unused, very fine. Scott \$350 ..... Est. \$150/200

998 ★★□ **1928, \$2, Block of 25, #RD31** *Web* **\$150**  
 N.h., typical poor centering, fine. Scott \$1,125 ..... Est. \$200/250

999 ○ **1944, \$1,000, #RD185** **\$500**  
 Handstamp cancel with staple hole at upper right, fine to very fine. Scott \$1,500 as cut cancel ..... Est. \$600/700

1000 ○ **1945, \$60, Strip of 4, #RD205** *Web* **\$350**  
 Dated magenta cancels, natural straight edge at right and at top and bottom, 3 with light creasing, fine overall. Scott \$2,000+ ..... Est. \$450/600



1001 ○ **1945, \$1,000, #RD208** **\$200**  
 Perfin cancel, fresh, extremely fine. Scott \$500 ..... Est. \$300/350

1002 ○ **1948, \$500, #RD282** **\$130**  
 Handstamp, uncut, very fine to extremely fine. Scott \$375 ..... Est. \$200/250

Lot Description Start Bid Lot Description Start Bid



1003 ○ **1949, \$2,500, #RD310 \$140**  
Black 1950 cds and faint cut cancel, well centered, very fine.  
Scott \$750 ..... Est. \$200/250

1004 ○ **1950, \$2,500, #RD336 \$600**  
Very light cut cancel, fresh, very fine, 2016 P.F. cert. Scott  
\$1,250 ..... Est. \$800/900



1005 (★) **Wines, 1942, 80¢, #RE142 \$120**  
Unused, very fine. Scott \$400 ..... Est. \$150/200



1006 ○ **Beer, 1870, 50¢ Lilac Security Lines, #REA17c \$500**  
Purple handstamp cancel with typical faults, fine, 2009 P.F.  
cert. Scott \$1,500 ..... Est. \$700/900



1007 ○ **Playing Cards, 1917, 7¢ on 2¢, Double Surcharge, Both Inverted, #RF10c \$150**  
Two clear impressions, nice copy, very fine. Scott \$550  
..... Est. \$250/300

1008 ★★ **Playing Cards, 1940, Dry Printing, Unwatermarked, Strip of 6, #RF26A Web \$100**  
N.h., two strips, very fine. Scott \$330 ..... Est. \$150/180



1009 ★ **Silver Tax, 1940, \$10, #RG54 \$600**  
L.h., fresh, very fine. Scott \$1,500 ..... Est. \$700/900



1010 (★) **Silver Tax, 1941, 1¢-80¢ Imperf, Pairs, #RG58a-RG69a \$200**  
Ungummed, large margin all around, fine to very fine. Scott  
\$950 ..... Est. \$300/400



1011 ★ **Silver Tax, 1941, \$3, #RG72 \$150**  
L.h., very fine. Scott \$375 ..... Est. \$170/200

1012 ○ **Silver Tax, 1941, \$100, #RG80 \$150**  
Magenta boxed cancel, very fine. Scott \$700 .. Est. \$250/300



1013 ★★ **Silver Tax, 1942, \$4, #RG98 \$150**  
N.h., with typical gum skips. Scott \$350 ..... Est. \$170/200



Lot Description Start Bid

1014 ★ **Tobacco Sale Tax: 1944 2 Oz Double Impression, Springer #TG622 var** *Web* \$100  
 Unlisted in Springer catalog, small faults as normal, fine  
 ..... Est. \$150/200



1015 ○ **Narcotic Tax, 1919, 4c, "P-W-R-Co.", #RJA28A** \$300  
 Used, bright color, few minor flaws as normal for this issue, fine to very fine and scarce. Scott \$1,500 ..... Est. \$400/500



1016 ○ **Customs Fee, 1887, 20c, Rouletted 7, #RL1c** \$250  
 Used with faint crease, otherwise fine. Scott \$1,500  
 ..... Est. \$300/400

1017 ★ **Revenue Stamped Paper: 1887 Railroad Bonds, #RN-P3, RN-V1, RN-P3** \$100  
 4 redeemed "Dubuque & Sioux City" with #RN-V1 and RN-P3 obliterated by RNW2, usual condition  
 ..... Est. \$150/200



1018 ★ **Revenue Stamped Paper: 50c Red Lincoln, Cut Square, #RN-V9** \$140  
 Fine to very fine. Scott \$550 ..... Est. \$200/250

*Match and Medicine*



1019 (★) **S. Mansfield & Co., 1c, Pink Paper, Imperforate Between, #RS174ci** \$150  
 Fresh color, huge to ample margins, very fine. Scott \$750  
*only 23 are recorded in the Aldrich book* ..... Est. \$200/300



1020 (★) □ **S. Mansfield & Co., 1c Pink Paper, Block of Four, Imperforate Between, #RS174cj** \$200  
 Bright color, thin at top right stamp, very fine. Scott \$1,000  
*only 25 recorded in the Aldrich book* ..... Est. \$300/400



1021 (★) **Ring's Vegetable Ambrosia, 2c Imperf, Silk Paper, #RS199b** \$1,000  
 Marginal copy with huge margins, deep rich color, otherwise extremely fine. Scott \$3,750, *only 20 examples are recorded in the Aldrich census* ..... Est. \$1,500/2,000

1022 ○ □ **Schwartz & Co., 1c, Silk Paper, Strip of 3, #RS215b** *Web* \$150  
 Large margins all around, small thin and creased, otherwise very fine. Scott \$480+ ..... Est. \$200/300

Lot Description Start Bid Lot Description Start Bid



1023 ○ **Wilder, Edward, 4¢ Die Cut, Silk Paper, #RS267b \$400**  
 Bright color, slightly irregular margin with small thins, otherwise fine to very fine. Scott \$2,250, 18 recorded in Aldrich book, of which half are faulty to some degree ..... Est. \$600/800



1024 (★) **Distilled Spirits Excise Tax, 1952, \$3,000, #RX44 \$450**  
 Unused, very fine. Scott \$750 ..... Est. \$500/600



1025 (★) **Firearms Transfer Tax: 1950, \$200 Type II, #RY4 \$150**  
 Ungummed, fine to very fine. Scott \$750 ..... Est. \$250/300



1026 (★) **Firearms Transfer Tax: 1994, \$5, #RY9 \$200**  
 Ungummed, scarce, very fine. Scott \$450 ..... Est. \$250/300

*Federal Hunting Permit*



1027 ★★□ **1934, \$1 Mallards, Block of 4, #RW1 \$650**  
 N.h., with pl. #129200, centered, very fine. Scott \$2,900+ ..... Est. \$1,000/1,300

1028 ★★ **1936, \$1 Canada Geese, #RW3 Web \$90**  
 N.h., pl. #, very fine. Scott \$325+ ..... Est. \$140/160



1029 ★★ **1940, \$1 Black Mallards, #RW7 \$500**  
 N.h., great centering, superb, same grade brought \$2900 hammer in 2017 Siegel Auction 2016 P.S.A.G. cert. Scott Stamp Values \$2,150 ..... Est. \$1,000/1,200



1030 ★★□ **1940, \$1 Black Mallards, Plate Block of 6, #RW7 \$650**  
 N.h., large bottom #143743, well centered, very fine. Scott \$2,900 ..... Est. \$800/1,000

1031 ★★□ **1942, \$1 Baldpates, Plate Block of 6, #RW9 Web \$400**  
 N.h., large top #F149600, very fine. Scott \$2,500 Est. \$500/600

1032 ★★□ **1944, \$1 White-Fronted Geese, Plate Block of 6, #RW11 Web \$160**  
 N.h., bottom #155603, vert perms weak, well centered, very fine. Scott \$750 ..... Est. \$200/250



Lot	Description	Start Bid
1033 ★★□	<b>1947, \$1 Snow Geese, Plate Block of 6, #RW14</b> N.h., bottom left #159463, very fine. Scott \$340 ..... Est. \$100/120	Web \$70
1034 ★★□	<b>1948, \$1 Buffleheads, Plate Block of 6, #RW15</b> N.h., large bottom #160102, one with gum skips, well centered, very fine. Scott \$400 ..... Est. \$120/160	Web \$80
1035 ★★□	<b>1949, \$2 Goldeneye Ducks, Plate Block of 6, #RW16</b> N.h., bottom #160792, very fine. Scott \$425 . Est. \$120/140	Web \$90
1036 ★★□	<b>1949, \$2 Goldeneye Ducks, Plate Block of 6, #RW16</b> N.h., top #160790, very fine. Scott \$425 ..... Est. \$120/140	Web \$90
1037 ★★□	<b>1954, \$2 Ring-Necked Ducks, Plate Block of 6, #RW21</b> N.h., top #164746, very fine. Scott \$550 ..... Est. \$160/200	Web \$130
1038 ★★□	<b>1963, \$3 Brants, Plate Block of 4, #RW30</b> N.h., #168273, very fine. Scott \$450 ..... Est. \$120/150	Web \$80
1039 ★★□	<b>1964, \$3 Nene Geese, Plate Block of 6, #RW31</b> N.h., bottom #168639, 2 staple holes in selvage, very fine. Scott \$1,950 ..... Est. \$400/500	Web \$300



1040 ★★□ **1984, \$7.50 Widgeons, Special Printing, Pl. Block of 6, #RW51x** \$450  
N.h., choice top left corner margin pl. #173872, with "50th Anniversary" and "14 of 15-2" printed in margin, Pos. IX1-1-6 which are penciled on reverse, post office fresh condition, Fine to Very Fine, 1987 P.F. cert ... Est. \$600/800



1041 B★ ★ **Savings Stamp, 1955, 10c, Booklet, #S1a** \$150  
N.h., fine to very fine. Scott \$750 as panes ..... Est. \$200/300

Lot	Description	Start Bid
1042 B★ ★	<b>Official Seal: 1972, Unlisted Partial Booklet, #OX42</b> First 10 panes are normal, panes 11-13 imperf between tab and first seal, pane 11 also with blind roulette 13 (double rouletted 6½) between seals 2-3, 3-4, and 4-5, pane 12 and 13 also double rouletted 13 between 2nd and 3rd seal and imperf between 3-4 and 4-5, unlisted in catalogs, fine to very fine ..... Est. \$350/400	Web \$250



1043 ★ **Christmas Seal: 1913 Type I, #WX11** \$150  
O.g., gum crease, fine. Scott \$1,400 ..... Est. \$200/300

*Confederate States of America*

1044 ☒ **Stampless: 1861 Turned Cover From Hamilton Ga. With Paid and Large 5** Web \$100  
Addressed to Union Point, GA Sep 5 1861, inside Washington GA with #12 ms cancel, no postmark, fine to very fine ..... Est. \$150/200



1045 ○ **Provisionals - Confederacy (5c-10c): Nashville, Tenn., 1861, 10c, #61X6** \$1,000  
Light blue cancel, 3 nice margins, touching at bottom, excellent color, sound in every respect, *last sold in auction in 1996* 1995 P.F. cert. Scott \$7,500 *Only approximately 25 examples of 10c Nashville are known, most of which have faults to varying degrees* ..... Est. \$1,500/2,000

1046 ☒ **1861, 5c on Cover, #1** Web \$80  
Four full margins tied by May 10 1862 Chattanooga Tenn cds to Georgia, very fine appearance. Scott \$300 ..... Est. \$100/150

1047 ☒ **1861, 10c Milky Blue on Advertising Cover, #2c** Web \$100  
Four large margins tied by upper left 9 1862 Montgomery Ala. cds from Central Bank of Alabama, envelope has been folded, very fine. Scott \$400 ..... Est. \$150/200

1048 F **1862, 10c Rose Sperati Proof, #5** Web \$100  
Very fine, signed by Sperati ..... Est. \$150/200

1049 P□ **1862, 5c, De La Rue Printing, Plate Proof on Wove, Block of 4, #6P5** Web \$150  
Ungummed, four full margins, *Ex Robson Lowe* signed on back. Scott \$600 ..... Est. \$200/300

- | <i>Lot</i> | <i>Description</i>   | <i>Start Bid</i>                     |
|------------|--|--------------------------------------|
| 1050 ★★□   | <b>1862, 5¢ Archer &amp; Daly Printing, Complete Sheet of 100, #7</b><br>N.h., trace of tone spot, very fine. Scott \$2,750 (hinged blocks of 4) ..... | <i>Web</i> \$500<br>Est. \$750/1,000 |
| 1051 F     | <b>1863, 10¢ Blue, "T-E-N" Sperati Proof, #9</b><br>Crease at top, otherwise very fine, signed by Sperati .....  | <i>Web</i> \$100<br>Est. \$150/200   |



- |          |   |                         |
|----------|---|-------------------------|
| 1052 (★) | <b>1863, 10¢ Milky Blue, "T-E-N", #9a</b><br>Unused, four large margins, extremely fine. Scott \$600 .....                            | \$200<br>Est. \$300/400 |
| 1053 (★) | <b>1863, 10¢ Perfed, #12f</b><br>Unused, toning on upper corners, rough perf at right, otherwise fine to very fine. Scott \$400 ..... | \$80<br>Est. \$120/150  |



- |        |  |                         |
|--------|--|-------------------------|
| 1054 ★ | <b>Canal Zone: 1926, 17¢, Sharp "A", "Zone" Only, #91a</b><br>O.g., bottom margin copy, nice color, very fine. Scott \$1,000 .....       | \$200<br>Est. \$300/400 |
| 1055 ★ | <b>Canal Zone: Postage Due; 1914 Set Complete, #J1-J3</b><br>L.h. (10¢) to part o.g. (1¢), fresh, very fine overall. Scott \$1,335 ..... | \$450<br>Est. \$500/600 |



- |         |   |                         |
|---------|---|-------------------------|
| 1056 ★□ | <b>Guam: Special Delivery; 1899, 10¢, Plate Block of 6, #E1</b><br>Disturbed o.g. with large top imprint and #880, fine to very fine, 2016 P.S.E. cert. Scott \$4,000 ..... | \$400<br>Est. \$600/800 |
|---------|---|-------------------------|

- | <i>Lot</i> | <i>Description</i>  | <i>Start Bid</i>                   |
|------------|---|------------------------------------|
| 1057 (★)□  | <b>Guam: Military; 1930, 1¢-2¢ Guard Mail Set, Block of 4, #M3-M4</b><br>Ungummed, very fine. Scott \$850 ..... | <i>Web</i> \$150<br>Est. \$250/300 |

*Hawaii*

- |          |  |                                    |
|----------|--|------------------------------------|
| 1058 ★★□ | <b>1868, 5¢, Re-Issue, Sheet of 20, #10, 10a</b><br>N.h., Pos. 2 showing the line through Honolulu, "pos.2 with small surface scrape at top left and pos. 3, 14 and 15 with toned spots", very fine, 2004 P.F. cert. Scott \$602 ..... | <i>Web</i> \$200<br>Est. \$250/300 |
| 1059 ★★□ | <b>1868, 5¢, Re-Issue, Sheet of 20, #10, 10a</b><br>Full o.g. with some small adhesions at top and bottom, Pos. 2 showing the line through Honolulu, pos. 10 with toned spot, still very fine. Scott \$602 .....                       | <i>Web</i> \$200<br>Est. \$250/300 |



- |           |   |                         |
|-----------|---|-------------------------|
| 1060 ★★★□ | <b>1893, 1¢, Double Red Overprint, Block of 4, #55f</b><br>Corner block of 4, one overprint heavy, second light and very misplaced incl. into selvage, l.h. to o.g. (h.r.), bottom right stamp n.h., choice very fine, 2017 P.S.E. cert. Scott \$1,000+ ..... | \$600<br>Est. \$600/800 |
|-----------|---|-------------------------|



- |         |   |                         |
|---------|---|-------------------------|
| 1061 ★★ | <b>1894, 1¢ Gutter Pair With Misspelled "Spceimen" in Red, #74S</b><br>N.h., positions in pencil on back, fine to very fine, 2015 P.F. cert. .... | \$225<br>Est. \$300/350 |
|---------|---|-------------------------|



Lot Description Start Bid Lot Description Start Bid



1062 ★★□ **1894, 1c With Misspelled "Speceimen" in Red, #74S** \$450  
 N.h., gutter block of 4, positions in pencil on back, very fine, 2015 P.F. cert. .... Est. \$550/650



1066 ★★□ **1c With "Specimen" Overprint in Red, #80S** \$700  
 N.h., top imprint block of 6, security punch holes, very fine, 2015 P.F. cert. .... Est. \$750/850



1063 ★★□ **1894, 10c With Misspelled "Speceimen" in Red, #77S** \$525  
 N.h., gutter block of 4, double imprints, positions in pencil on back, short perf at bottom, fine to very fine, 2015 P.F. cert. .... Est. \$600/700



1067 ★★ **2c Gutter Pair With "Specimen" Overprint in Blue, #81S** \$225  
 N.h., security punch holes, fine to very fine, 2015 P.F. cert. .... Est. \$250/300

1064 ★★□ **1894, 10c With Misspelled "Speceimen" in Red, #77S** \$400  
 N.h., block of 4, positions in pencil on back, fine to very fine, 2015 P.F. cert. .... Est. \$500/600



1068 ★★□ **2c With "Specimen" Overprint in Blue, #81S** \$425  
 N.h., bottom imprint block of 6, security punch holes, "bottom left margin tab with small faults", fine, 2015 P.F. cert. .... Est. \$450/550

1899 Issue



1065 ★★□ **1c With "Specimen" Overprint in Red, #80S** \$450  
 N.h., block of 4, security punch holes, very fine, 2015 P.F. cert. .... Est. \$500/600



Lot Description Start Bid Lot Description Start Bid



- 1069 ★★□ **5c With "Specimen" Overprint in Red, #82S** **\$525**  
 N.h., gutter block of 4, double imprints, security punch holes, very fine, 2015 P.F. cert. .... Est. \$550/650
- 1070 ★★□ **5c With "Specimen" Overprint in Red, #82S** **\$475**  
 N.h., block of 4, security punch holes, very fine, 2015 P.F. cert. .... Est. \$500/600
- 1071 ★ **Official: 1896 Set, #01-06** *Web* **\$90**  
 L.h. to o.g., sharp colors, fine to very fine. Scott \$300  
 ..... Est. \$100/120



- 1074 ★★□ **1901, \$50 With "Specimen" Overprint in Red, #R12S** **\$525**  
 N.h., block of 4, security punch holes, fine to very fine, 2015 P.F. cert. .... Est. \$550/650
- 1075 ★★ **1913, 50c With "Specimen" Overprint in Blue, #R13S** **\$225**  
 N.h., pl. #F3507, security punch hole, fine to very fine, 2015 P.F. cert ..... Est. \$250/300

*Hawaii Revenue*



- 1072 ★★□ **1877, \$1 With "Specimen" Overprint in Red, #R3S** **\$425**  
 N.h., block of 4, security punch holes, fine to very fine, 2015 P.F. cert. .... Est. \$450/550
- 1073 ★★□ **1897, \$1 With "Specimen" Overprint in Red, #R11S** **\$525**  
 N.h., margin block of 4, security punch holes, very fine, 2015 P.F. cert. .... Est. \$550/650



- 1076 ★★□ **1913, 50c With "Specimen" Overprint in Blue, #R13S** **\$500**  
 N.h., marginal block of 4, security punch holes, fine to very fine, 2015 P.F. cert ..... Est. \$550/650
- 1077 ★★□ **1913, \$1 With "Specimen" Overprint in Red, #R14S** **\$500**  
 N.h., imprint block of 4, security punch holes, fine to very fine, 2015 P.F. cert ..... Est. \$550/650



Lot Description Start Bid Lot Description Start Bid



1078 ★★ **1910, \$10 With "Specimen" Overprint in Red, Pair, #R16S \$250**  
 N.h., marginal, security punch holes, fine to very fine, 2015 P.F. cert ..... Est. \$300/350



1079 ★ **Philippines: 1901, \$1, Type II, #223A \$270**  
 Dist. o.g., slightly soiled, fine. Scott \$2,000 .... Est. \$400/500



1080 ★★ **Philippines: 1926, 4p Madrid-Manila Flight, #C14 \$100**  
 O.g., "tiny thinning", usual centering, very fresh, scarce, 1982 P.F. cert. Scott \$750, 700 sold ..... Est. \$120/140

*Ryukyu Islands*



1081 ★ **1952, 100y on 2y, #17 \$350**  
 O.g., fine to very fine. Scott \$1,600 ..... Est. \$500/600



1082 ○ **1952, 100y on 2y, "Kai Tei" in 8/8 Point Type, #17a \$350**  
 Used, fine to very fine, 2012 P.F. cert. Scott \$1,400 ..... Est. \$500/600



1083 ★★ **1964, 3c Opening of Microwave System Between Ryukyus and Japan, Overprint Inverted, #122b \$350**  
 N.h., fine to very fine. Scott \$1,500, scarce ..... Est. \$450/550

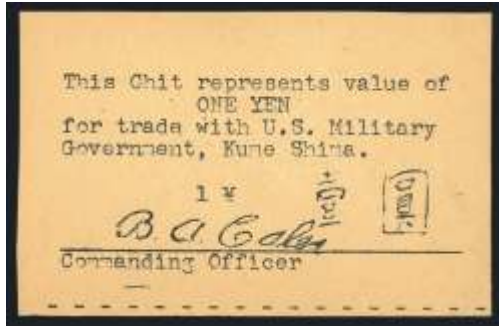


1084 ★ **Paid Reply Postal Card, 1948, 10s+10s Dull Red on Grayish Tan, Unsevered, #UY1 \$600**  
 Folded as always, immaculate, extremely fine. J.S.C.A. #MR1. Scott \$2,000, rare ..... Est. \$800/1,000



1085 (★) **Provisional: Kume Island, 1945, 7s Black, #1X1 \$900**  
 Ungummed, left sheet margin single, Pos. 19, fresh and Extremely Fine, *this is a rare provisional that was printed on legal-size U.S. military mimeograph paper and then validated by the red official seal of Norifume Kikuzato, postmaster of Kume .* J.S.C.A. #K1. Scott \$2,750 ..... Est. \$1,000/1,200

Lot Description Start Bid Lot Description Start Bid



1086 ★ **Provisional: Kume Island; 1945 (Oct. 1) U.S. Military Scrip, One Yen Black on Manila** \$300  
 Mimeograph "chit" with facsimile signature of C.A. Caler, Commanding Officer, immaculate and very fine, *This "Chit" was issued in 1945 by the U.S. Military Government of Kume Shima (Navy) for trade with, and between, Island Civilians and the U.S. Government. The stencil was prepared by Navy Yeoman Crutchfield and signed by Navy Lt. B.A. Caler, and run off on a Navy Mimeograph machine on official paper* ..... Est. \$400/500

1087 ★ **Provisional: Miyako District, 1946-47 Both Chop Issues, #3X1-13, 15-22, 25, 28-31** Web \$750  
 O.g. (few with tissue paper adherence) to unused, incl. #3X2b, extra 3X16 with sewing machine perfs, 3X28a, fresh throughout, fine to very fine. Scott \$3,200 ..... Est. \$900/1,100



1088 (★) **Provisional: Miyako District, 1947, 1y on 3s, #3X27** \$800  
 Unused, marginal copy (tear in selvage), nicely centered, very fine and rare. Scott \$3,000 ..... Est. \$900/1,000



1089 ★★ **Revenues, 1952-54 Set, #R1-R8** \$150  
 N.h., fine to very fine. Scott \$715 ..... Est. \$200/250



1090 (★) **Revenues, 1958, 1c-\$10 Set, #R9-R16** \$325  
 Ungummed, fine to very fine. Scott \$1,375 .... Est. \$400/500



1091 ★★ **Revenue, 1959-69, 1c-\$10, #R17-R28** \$300  
 N.h., overall very fine. Scott \$1,287 ..... Est. \$400/500



1092 (★) **Unemployment Insurance, 1961, 2c Pale Red, #RQ1** \$250  
 Ungummed, very fine. Scott \$800 ..... Est. \$300/350

1093 ★★★ **Provisional Issues Miyako: 1948 Set, #3XR1-3XR7** Web \$100  
 N.h. or tissue adherence, several with handstamp on reverse, fresh, fine to very fine. Scott \$400 ..... Est. \$130/160

1094 ★★ **Specimens: 1961-64, 1964-65 Mint Group** Web \$300  
 N.h., 16 diff., missing #118-12a-S, fine to very fine. Scott \$1,210 ..... Est. \$400/500

1095 S **Specimens: Postal Cards; 1964-65 Mihon Overprint Set, #UX26s-29s** Web \$300  
 Mint, immaculate, very fine. Scott \$1,275 1000-1100 sold for each ..... Est. \$400/500

*End of Second Session*