

Lot Description Start Bid Lot Description Start Bid

Saturday, January 9, 2016

7:00 p.m., Lots 841-1236

U.S. Possessions

See Lots 42-68, 1253 for Danish West Indies

Canal Zone



841 ★ 1904, First Issue Complete, #1-3 \$220
O.g. (2c no gum), fresh, fine, APS, PF, PSAG certs. Scott \$1,350 Est. \$300/400



842 ★ 1904, 10c, "CANAL ZONE" \$100
Inverted, #3a
"Small part o.g." (much more), small amount of staining not mentioned on cert., very fine, PSE (2005) cert. Scott \$775, only 200 issued Est. \$150/200

843 ★★ 1904, 2c, Inverted Overprint, #10a \$70
N.h., fine, APS (1978) cert. Scott \$225 Est. \$100/120



844 ★ 1904, 8c on 50c Bister Brown, #15 \$450
Tropical o.g., variety 1st "A" in "Panama" at right inverted "V" and three Panamas, fresh for this, fine to very fine, APS (2011) cert. Scott \$2,000 Est. \$600/800

845 ★□ 1909-10 Overprint Set, Plate Blocks \$280
of 20, #31-35 Web
Mostly n.h. as far as we can tell, hinged on pages, very fresh, fine to very fine. Scott \$1,685 + (singles) Est. \$400/500

846 ★ 1911, 10c on 13c, "10 cts" \$80
Inverted, #36a
Tropical o.g., fine to very fine, PF (2014) cert. Scott \$350 Est. \$120/150



847 B★ 1912, 2c, Booklet Pane of 6, Imperf \$100
Margins, #39c Web
Tropical n.h., well centered, very fresh, very fine. Scott \$550 Est. \$150/200

848 ★ 1915, 5c Deep Blue & Black, #48 \$110
L.h., fresh, very fine, APS (1980) cert. Scott \$450 Est. \$150/200

849 ★ 1924 Set, The Unissued \$450
Denominations, #68-69, vars.
"Original tissue paper", fine to very fine, APS (2011) cert. Scott \$2,450 Est. \$600/800



850 ★□ 1926, 5c, Sharp "A", "ZONE" \$300
"ZONE", #86a
Tropicalized o.g., two sheets with 18th pos. having "ZONE ZONE" error, sheets have tropical gum and few perf. seps., some hinging for reinforcement, very rarely seen, fine to very fine appearance. Scott \$2,000 Est. \$500/600

851 →○ Airpost Officials: 1941 Set, Type II, \$150
#CO8-CO12 Web
Fine to very fine. Scott \$855 Est. \$250/300

852 ★ Postage Due: 1914, 10c Rose \$200
Carmine, #J3
"Slightly dist. by tissue", very fresh, fine to very fine, APS (2012) cert. Scott \$1,000 Est. \$300/400



853 (★) Official: 1941, 5c Blue, #O3 \$140
Unused, s.e. at bottom, fresh, fine and scarce, APS (2012) cert. Scott \$1,000 Est. \$200/250

854 ○ Official: 1941, 50c Rose Lilac, Type \$140
Ia, #O8
Used, sound, fine to very fine, PSE (2013) cert. Scott \$600 Est. \$200/300

Lot *Description* *Start Bid* *Lot* *Description* *Start Bid*

855 ★✉ Postal Stationery: 1934, 3c on 2c,
Both Designs, #U14-15 *Web* \$120
Mint, clean, very fine. Scott \$675 Est. \$180/200



856 ★★□ Cuba: 1899, 3c on 3c,
Plate Block of 6, #224 \$150
N.h., fresh, plate #449, very fine. Scott \$675 . Est. \$200/300

857 ✉ Cuba: 1901, 1c Uprated Registered
Stationery Envelope, #228-29, U9 *Web* \$70
Internal usage from Havana to Santiago, with 2c and 3c (3)
adhesives on reverse, red straightline receiving hs. on reverse
dated Dec 2, 1901, fine to very fine Est. \$100/150



858 ★★□ Cuba: Special Delivery; 1899,
10c, Block of 4, #E1 \$200
N.h., arrow, n.h., fresh and bold color, fine to very fine. Scott
\$1,200 Est. \$300/400

Guam

1899 Regular Issues

859 ★□ 1c, Plate Block of 6, #1 *Web* \$70
Tropical o.g., #831, fresh, fine. Scott \$350 Est. \$100/120

860 ★ 3c, Plate # Imprint Strip of 3, #3 *Web* \$110
O.g. (h.r.), fresh and fine to very fine. Scott \$575
..... Est. \$150/200



861 ★□ 4c, Plate Block of 6, #4 \$350
Slightly tropical o.g., #791, deep shade, fine to very fine
overall. Scott \$1,750 Est. \$500/700



862 ★□ 4c, Plate Block of 6, #4 \$325
Slightly tropical o.g., large bottom #792, deep shade, fine
and attractive. Scott \$1,750 Est. \$400/550

863 ★□ 6c, Plate Block of 6, #6 *Web* \$250
Dist. o.g., bottom, #922, excellent color, usual centering,
fine. Scott \$1,500 Est. \$300/400

864 ★□ 8c, Plate Block of 6, #7 *Web* \$200
Dist. o.g., large bottom, #929, excellent color, usual
centering, fine. Scott \$1,250 Est. \$250/300

865 (★)□ 10c, Type I, Plate Block of 6, #8 *Web* \$150
Unused, side #520, nice color, fine centering, fine. Scott
\$1,000 Est. \$200/250

Lot Description Start Bid Lot Description Start Bid



866 ★ 10c, Type II, #9 \$400
Part o.g., "slightly defective", fine appearance, PF (1975)
cert. Scott \$3,750 Est. \$500/700



867 ★□ 15c, Plate Block of 6, #10 \$450
Dist. o.g., bottom #264, nice color, fine centering, excellent
color, fine. Scott \$2,200 Est. \$600/800



868 ★□ 50c, Plate Block of 6, #11 \$600
Dist. o.g., bottom #75 (bottom middle selvage piece
separated (needs to be rejoined), very fine centering, lovely
very fine appearance. Scott \$4,500 Est. \$800/1,000



869 ★□ \$1, Type I, Corner Block of 4, #12 \$450
Slightly dist. o.g., well centered, fresh, choice very fine. Scott
\$1,750 Est. \$600/800

1899 Regular Issue Postal History



870 ☒ Complete Set Except 10c, Type II \$2,000
Registered to Saipan, #1/12, E1
Each on one oblong rice paper cover, sent reg. to Mariana
Islands and dated Dec. 24, 1900 with straightline datestamp,
each stamp with purple straightline AGANA, GUAM hs.
tying, matching "Agana Guam R. 182" circle hs. with
registry number in brown ink, matching "S12" written
outside of circle and deleted in black ink, bold "Saipan
Marianen 1/1 01" cds on back, 2c with tiny scuff and faint
gum stain, \$1 with gum stains around stamp, still very fine,
a handsome and very rare showpiece, realized \$2400 in the
1995 Rarity sale. A nearly identical cover from the same
correspondence, realized \$6,600 in the Siegel 1989 Specialized
Guam sale PF (1966) cert. Scott \$4,800+ . Est. \$2,500/3,000



871 ☒ 1c-8c to Berlin, #1-7 \$230
Fine to very fine, tied by Agana, Guam (Murphy 2.3)
straightline cancels, re-addressed, Dec 21, 1900 with transit
markings incl. Hong Kong, fine to very fine and attractive,
Bickel correspondence. Scott \$1,115+ Est. \$300/400

Lot Description Start Bid Lot Description Start Bid



875 1c, 2c, 5c "San Luis D'Apra" to S.F., #1, 2, 5 *Web* \$100
Tied by blue "San Luis D'Apra, Guam, Dec. 9, 1899" two-line datestamp on cover with printed address to Makins & Co. in San Francisco, receiving backstamps, blue "23" at upper left, 5c perfs affected from placement at edge of cover, still very fine, *this is No. 23 of 25 created for Makins, a stamp dealer, shortly after these stamps were issued* Est. \$150/200

872 1c, 2c, 5c "Spanish Cancellers" to S.F., #1, 2, 5 \$150
Tied by bold blue Ovals of Tiny Squares with Star in Center Spanish cancels on San Francisco printed address cover, matching tiny "Marianas Set 11" circular datestamp, "Yokohama Japan 16 Sep 99" and San Francisco backstamps, vert. fold, fine to very fine, *this is cover no. 7 of a series of 25 prepared for Makins & Co.* Est. \$250/350



876 1c, 3c, 6c Commercial to NY, #1, 3, 6 \$140
6c s.e., very fine, tied by purple straightline Agana Aug 23, 1900 reg. to Troy with Manila and Murphy 1.5, 2.3 cancels, a very fine cover. Scott \$650+ Est. \$200/250



877 1c to 8c Registered to Germany, #1/17 *Web* \$140
Agana Guam purple straightline (Murphy #1.5) dated Jan. 7, 1901 and ms. Reg. #266 (Murphy #2.3) to Dresden, vert. fold, fine to very fine, *Kinze correspondence* Est. \$200/300

873 1c, 2c, 5c "Bear's Paws" Usage, #1, 2, 5 \$150
5c slight corner damage, otherwise fine, tied by "San Luis D' Apra, Guam" and "Dec. 13, 1899" straightlines and bold so-called "Bear's Paw" cork killers to Altoona Pa., Mil. Sta. No. 1 Manila and Altoona backstamps, cancelling ink at top left, very fine and scarce Est. \$200/300



878 3c, 4c, 6c Commercial to Mass., #3, 4, 6 \$150
6c s.e., very fine, tied by purple straightline Agana JAN 28, 1901 reg. to Waltham with Manila and Murphy 1.5, 2.3 cancels, a very fine cover. Scott \$800+ Est. \$200/250



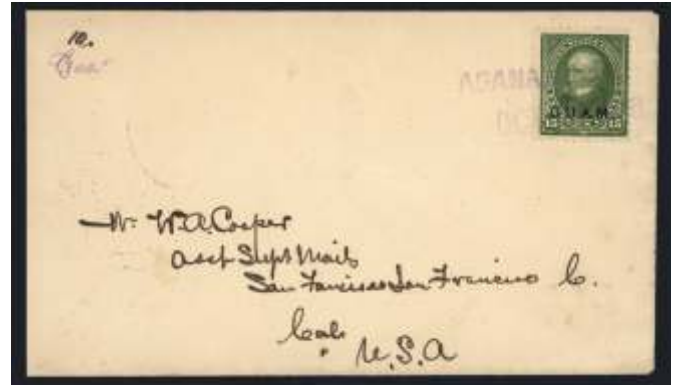
879 5c, 6c on U.S. Naval Station Corner Card, #5-6 *Web* \$110
Fine, tied by straightline Agana, Guam (Murphy 1.5, 2.3) cancels, reg. to NY APR 16 1901, a fine to very fine cover. Scott \$495+ Est. \$150/200

874 1c, 2c, 5c "Bear's Paws" Usage, #1, 2, 5 \$150
Tied by "San Luis D' Apra, Guam" and "Dec. 13, 1899" straightlines and bold so-called "Bear's Paw" cork killers to Altoona Pa., Mil. Sta. No. 1 Manila and Altoona backstamps, cancelling ink at top left, very fine and scarce Est. \$200/300

880 5c, 8c Registered to Germany, #5, 7 *Web* \$110
Fine, tied by JUN 14 1900 Agana Isle purple cancels with S.F. and N.Y. transits, flap damage on reverse, slight soil spot, a fine cover. Scott \$495+ Est. \$150/200

Lot Description Start Bid Lot Description Start Bid

881 ☒ 8c Pair to Mass. With Enclosure, #7 Web \$110
 Very fine, tied by straightline Agana, Guam May 6 1901 (Murphy 1.5, 2.3) cancels, reg. to Hyde Park, with enclosure signed by 2nd Governor Cdr. Schroeder mentioning "some of the denominations have become exhausted", a very fine cover. Scott \$610+ 8c used multiples are scarce Est. \$150/200



884 ☒ 15c Triple Rate to S.F., #10 \$200
 Fine, tied by straightline Agana OCT 1900 cancel with Manila transit markings on reverse, slightly reduced at left, a very fine cover. Scott \$900 Est. \$250/350

882 ☒ 10c Registered From Ladrone Station, #8 \$150
 Oct. 4, 1901 with Murphy cancels 1.10 and 2.3 to Chicago with various transit and arrivals on reverse, fine to very fine. Scott \$275 Est. \$200/250



885 ☒ 15c With 1c to Washington, #10; 1 \$150
 Fine to very fine, by "Agana Island Of Guam May 22, 1902" (Murphy 1.1, 1.10) circular datestamp to Everett, Wash., transit markings on reverse, very fine and attractive, Zug correspondence. Scott \$925+ Est. \$250/350



883 ☒ 15c Patriotic to Massachusetts, #10 \$200
 S.e. at right, tied by purple "Agana, Isle Of Guam." and "Jun. 14, 1900" straightlines on cover to Mass. with pretty red and blue Patriotic Eagle and Shield corner card, Mil. Sta. No. 1 Manila and Boston/Malden backstamps, very fine, a very fine cover, *this is the First Day of use of this cancel which was in service for only four months*. Scott \$900 Est. \$300/400

886 ☒ 15c With 5c to Washington, #10; 5 \$180
 Tied by "Guam Isl. Guam Jun. 10, 1905" duplex datestamp on reg. cover from the Zug correspondence, magenta "Guam, Registered" double-circle, horiz. fold, immaculate and very fine, Zug correspondence. Scott \$945+ Est. \$250/350

Lot Description Start Bid Lot Description Start Bid



887 50c Orange to Washington, #11 \$300
 Fine, tied by "Guam, Isl. Guam, Jun. 10 6PM 1905" (Murphy 1.11, 2.6) circular on reg. to Everett Wash., appropriate registry markings, receiving backstamp, a very fine cover. *Zug correspondence*. Scott \$1,500 *last known date of use of Murphy cancel 1.11* Est. \$450/600



890 50c, \$1, Type I to Washington, #11, 12 \$1,100
 Tied by magenta "Guam Isl, Guam 1905" Jun 10 reg. postmark at left, grid duplex postmark, reg. to Washington, rare, a very fine cover, *Zug correspondence* PF (1981-copy, 1998) certs., *realized \$2800 in 1985 rarity sale* Est. \$1,500/2,000



888 50c Corner Card to Penns., #11 \$300
 Tied by "Agana Island of Guam Jan 22, 1902" circular datestamp, "Office of Inspector of Ordnance for U.S. Navy", slightly smudgy cover, sound, otherwise fine to very fine. Scott \$1,500 Est. \$400/600



891 50c, \$1 With 2c, 5c, 10c, Registered to Dresden, #11-12; 2, 5, 8, \$1,000
 2c, 5c, 10c, 50c, \$1 tied by blue "Guam Ladrone Isls. Aug. 24, 1901" duplex cancels on reg. cover to Germany, blue "Agana Guam" dateless handstamp with ms. registry no., transit and receiving backstamps, light vertical file fold at far left well clear of stamps, a fine to very fine cover, *Kinze correspondence, Magellan named the islands Ladrone Islands (Thieves Islands) but the locals resented the name and it was eventually dropped from use.* Scott \$3,900+ *companion to lot 948 from the Long collection offered in 2007 which realized hammer \$3000. This cover is nicer!* Est. \$1,500/2,000



889 50c Orange to Washington, #11 \$300
 Fine, tied by "Guam Isl. Guam Apr. 2, 1903" (Murphy 1.11) duplex datestamp reg. San Francisco and Everett Wash. registry backstamps, immaculate and very fine, *Zug correspondence*. Scott \$1,500 Est. \$400/600



892 50c With 2c Registered to Saipan, #11; 2 \$300
 50c slightly overlapping cover but sound with 2c (slight gum soiling) to address in Saipan all with 10/10/1900 cds and tied by straightline Agana Guam purple cancel (Murphy 1.5), vert. fold, fine, *Herr Fritz correspondence*. Scott \$1,500 Est. \$400/600

Lot Description Start Bid Lot Description Start Bid



893 ☒ 50c With 2c to Chicago, #11; 2 \$200
 50c centered left, tied with 2c by killer blue duplex #1 and Ladrone June 4, 1901 (Murphy 1.10, 2.3) cancels with Agana Guam registry handstamp with "hump" in rim to facilitate the Spanish "tilde" accent mark over the "N" of Agana, transit and receiving marks on reverse, cover slightly dirty, a fine cover. Scott \$1,525, *scarce usage* Est. \$300/400



895 ☒ 50c and Special Delivery 10c to Berlin, #11, E1a \$600
 Tied by "Agana, Island of Guam Apr. 29, 1902" circular datestamp (Murphy 1.1, 1.9) reg. to Otto Bickel in Berlin, Germany, ms. registry no. and purple straightline handstamp, Manila and receiving backstamps, trivial edge wear, very fine, *Bickel correspondence* PSE (1991) cert. Scott \$1,900 +, *scarce, especially with the "five dots" variety* Est. \$800/1,000



894 ☒ 50c Red Orange With 15c to Germany, #11a; 10 \$300
 Tied by "Agana, Island of Guam Apr. 29, 1902" circular datestamp (Murphy 1.1, 1.6) reg. to Otto Bickel in Berlin, Germany, ms. registry no. and purple straightline handstamp, Manila and receiving backstamps, trivial edge wear, registration marks, "few minor creases in cover", still very fine, *sold \$575 in Siegel 1993 Rarity auction* PSE (1994) cert. Scott \$1,300+ Est. \$400/600



896 ☒ \$1, Type I to Washington, #12 \$800
 Fine, tied by "Guam Isl. Guam Jun. 10, 1905" duplex datestamp on reg. cover, magenta "Guam, Guam" double-circle registry handstamp, purple Everett Wash. registry backstamp, "light horiz. file fold", virtually extremely fine, *Zug correspondence, similar cover with defective bottom right corner of \$1 realized \$1600 in 2009 auction* PF (2007) cert. Scott \$3,500 Est. \$1,000/1,400

Lot Description Start Bid Lot Description Start Bid



897 ☒ \$1, Type I to Washington, #12 \$600
 Very fine, tied by Nov. 30(?) 1901 duplex to Everett Wash. by "Agana, Island of Guam Nov. 30, 1901" circular datestamp (Murphy 1.9, 2.3) cancels on reg. to Everett Wash., no backstamp, a fine to very fine cover. Scott \$3,500
 Est. \$800/1,000



898 ☒ \$1 Type I With Special Delivery 10¢ to Germany, #12, E1 \$600
 With 8¢, fine to very fine, tied by "Agana Island of Guam, Jan 25, 1903" (Murphy 1.10) cds, reg. crossed out, "Received in Manila Without Contents in Ordinary Mail", Cavite transit, immaculate and very fine. Scott \$3,700+
 Est. \$800/1,000



899 ☒ \$1 With 1¢-6¢ to Germany, #12; 1-6 \$550
 Some slight toning around perf edges from gum, tied by purple "Agana, Guam" straightline handstamps on reg. cover to Germany, Jan. 7, 1901 transit and receiving backstamps, typed "Registered!", horiz. and vert. folds, transit and Plauen arrival cancels on reverse, fine, *Wagner correspondence*. Scott \$4,165+ Est. \$800/1,000

900 ☒ Extensive Balance of Collection, #1/10, E1 *Web* \$7,000
 83 better, all showing regular issue and Special Delivery Guam overprint issues, few post overprint period incl. April 2nd 1941 letter from Guam mentioning Japanese planes overhead, incl. "Makins", "Cox", "Fritz" to Saipan, "Zug", few corner letterheads incl. "Inspector of Ordnance", few commercial, overseas incl. France, denominations up to 15¢, also E1 (3) usages, various straightline and circular cancels, mixed condition, excellent overall and rarely seen this extensive, generally fine Est. \$10,000/15,000

1900 Special Printing



901 ★ Sets Complete, Without Handstamp, #1SE-12SE, E1SE \$3,000
 O.g., \$1, E1 margin copies, signed by Bartels, very rare, fine to very fine, Friedl (1960) cert. Scott \$13,500 *100 sets exist*
 Est. \$5,000/6,000

100 of the 1¢, 2¢, 5¢ and 200 of the other values were specially overprinted in 1899 for the Third Assistant Postmaster General. Two singles and two blocks of four were selected for display at the 1900 Paris Universal Exposition. Most of the remaining copies were used for specimen stamps but a few reached the public by favor.



902 S 2¢ Light Red, #2SE var. \$160
 Full o.g. (gum spot), sound, fine to very fine, signed Bartels, PF (1992) cert. Scott \$1,000, *100 sets exist* Est. \$200/250

903 S 2¢ Light Red, #2SE var. \$150
 Tropical o.g., "small thin spot and closed tear", fine appearance, PF (1992) cert. Scott \$1,000, *100 sets exist*
 Est. \$200/250

904 S 3¢ Purple, #3SE var. \$140
 Redistributed o.g. "covering thinning", fresh, fine to very fine appearance, signed Bartels, PF (2008) cert. Scott \$1,000, *100 sets exist* Est. \$200/250

Lot Description Start Bid Lot Description Start Bid



- 905 S 4c Lilac Brown, #4SE var. \$250
Full o.g. (h.r.), excellent color, fine to very fine, signed Tows, PF (2008) cert. Scott \$1,000, *100 sets exist* Est. \$350/400
- 906 S 4c Lilac Brown, #4SE var. \$140
O.g. (h.r.), "tiny thin spot", excellent color, fine to very fine appearance, signed Bartels, PF (2008) cert. Scott \$1,000, *100 sets exist* Est. \$200/250
- 907 S 5c Blue, #5SE var. \$300
L.h., excellent color, very fine to extremely fine and rare, signed Special Surcharge, PF (1978) cert. Scott \$1,000, *100 sets exist* Est. \$350/450



- 908 S 6c Lake, #6SE var. \$150
O.g. (h.r.), "small thins", excellent color, fine to very fine overall, signed Bartels, PF (2008) cert. Scott \$1,000, *100 sets exist* Est. \$200/250
- 909 S 8c Violet Brown, #7SE var. \$200
O.g. (h.r.), excellent color, fine, signed Tows, etc., APS (1974) cert. Scott \$1,000, *100 sets exist* Est. \$300/350
- 910 S 8c Violet Brown, #7SE var. \$200
L.h., "tiny thin", excellent color, fine to very fine overall, signed Bartels, etc., PF (2008) cert. Scott \$1,000, *100 sets exist* Est. \$250/300



- 911 S 10c Brown, Type I, #8SE var. \$150
L.h., excellent color, fine or better, signed Bartels, etc., PF (2008) cert. Scott \$1,000, *100 sets exist* Est. \$250/300
- 912 S 15c Olive Green, #10SE var. \$240
O.g., excellent color, very fine, signed Bartels, etc., PF (2008) cert. Scott \$1,000, *100 sets exist* Est. \$300/350
- 913 S 15c Olive Green, #10SE var. \$150
Part o.g., slight thinning, excellent color, well centered for this, fine to very fine appearing, signed Bartels, etc. Scott \$1,000, *100 sets exist* Est. \$200/250



- 914 S 50c Orange, #11SE var. \$250
L.h., sound, fine to very fine overall, signed Bartels, etc., PF (2008) cert. Scott \$1,250, *100 sets exist* Est. \$350/450
- 915 S 50c Orange, #11SE var. \$200
Full o.g., small thin spot, fine overall, signed Special Surcharge, PF (1992) cert. Scott \$1,250, *100 sets exist* Est. \$250/350



- 916 S \$1 Black, Type I, #12SE var. \$350
Full o.g. (h.r.), "small tear", well centered for this, fine to very fine appearing, signed Bartels, etc., PF (2008) cert. Scott \$2,000, *100 sets exist* Est. \$450/550
- 917 S \$1 Black, Type I, #12SE var. \$250
Dist. o.g., minor faults, fine to very fine appearing, signed. Scott \$2,000, *100 sets exist* Est. \$350/450

Special Delivery



- 918 ★□ 1899, 10c, Plate Block of 6, #E1 \$750
L.h., large bottom #882, slight reinforcing, excellent color, overall very fine. Scott \$4,000 Est. \$1,000/1,200

Lot Description Start Bid Lot Description Start Bid



919 ★□ 1899, 10c, Plate Block of 6, #E1 \$550
Tropical o.g., large bottom #883, excellent color, fine overall, PSE (1994) cert. Scott \$4,000 Est. \$800/1,000



920 ★□ 1899, 10c, Plate Block of 6, #E1 \$550
Tropical o.g., large top #883, excellent color, fine, PSE (1994) cert. Scott \$4,000 Est. \$800/1,000



921 ★□ 1899, 10c, Plate Block of 6, #E1 \$500
L.h., large top #882, perfs touch, excellent color, fine overall. Scott \$4,000 Est. \$700/900

Special Delivery Postal History



922 ☒ 10c on 1900 Naval Usage, #E1; 3-46-10 \$300
Faulty copy along with 3c, 4c, 6c-15c (few with minor faults), tied by circular San Luis D'Apra JUL 24 1900 from USS Yosemite reg. to Pittsburgh with appropriate Manila and Murphy 1.5 and 2.3 cancels, minor cover faults, *most E1 usages are from the Zug correspondence*. Scott \$2,400+ Est. \$400/600



923 ☒ 10c With 2c, #E1; 2 \$300
E1 centered bottom, sound tied with 2c by "Agana Island of Guam Nov. 30, 1901" (Murphy 1.90) circular datestamp to Everett, Wash., small repaired tear, fine to very fine and attractive, *Zug correspondence*, signed Bartels. Scott \$1,525+ Est. \$400/600



924 ☒ 10c With 2c, 6c, #E1; 2, 6 \$250
10c and two 2c, 6c affixed upside down and tied by "Agana, Island of Guam Mar. 1, 1902" datestamps on cover to Essex Junction Vermont, some slight toning incl. around adhesives, still fine, fine overall, *realized \$700 in 2004 auction*. Scott \$1,740+ Est. \$350/450

Lot Description Start Bid Lot Description Start Bid



925 ☒ 10c with 8c to 50c to Germany, #E1; 7-8, 10-11 \$350
 With 8c small tear, 15c slight gum soiling, 10c, 50c, E1 fine to very fine, tied by Agana, Guam straightline Jan 7 1901 to Buchholz, Murphy 1.5, 2.3 cancels, typed "Registered", horiz. fold at top, fine cover, *Voight correspondence*. Scott \$2,255+ Est. \$500/700



928 ☒ 10c Variety to Washington, DC, #E1a; 2, 7 \$250
 Variety "dots in curved frame", tied with 2c, 8c, fine to very fine with blue AGANA, Guam straightline May 23 1901 (Murphy 1.5, 2.3) cancels to Dept. of Interior, vert. fold, fine to very fine. Scott \$1,685 +, *rare with variety*.. Est. \$350/450

Guard Mail



926 ☒ 10c with 15c to Mass., #E1; 10 \$300
 With 15c, fine to very fine, tied by "Agana, Island of Guam Apr. 17, 1902" circular datestamp (Murphy 1.9) to Kendall Green, Mass., some minor wear, very fine, scarce usage, small corner bend top right, a fine cover, *realized \$1300 in 2004 auction*. Scott \$1,640+ *15c on cover cats. \$900, E1 on cover \$1500* Est. \$400/600



929 ★☐ 1930, 2c, Block of 4, #M1 \$250
 N.h., usual centering, pos. 24-25, 34-45, fresh, about fine, *ex Sicking Rothschild* PF (1974) cert. Scott \$2,300+ Est. \$350/450



927 ☒ 10c Variety to Germany, #E1a; 7-8, 10-11 \$350
 Variety "dots in curved frame" with 8c small fault, 10c slight gum soiling, 15c, 50c, E1 fine to very fine, tied by Agana, Guam straightline Jan 7 1901 to Plauen, Germany, Murphy 1.5, 2.3 cancels, horiz. fold, fine cover, *Wagner correspondence*. Scott \$2,255 +, *rare with variety*..... Est. \$500/700

930 (★)☐ 1930, 1c, Block of 19, #M3 *Web* \$450
 Ungummed, top right copy added to block, normal se. at left and bottom, second horizontal row with "Cleveland Bond" of papermaker's wmk. reversed, clean, very fine, *ex Sicking*. Scott \$2,460 + (blocks, singles), *one of the largest blocks known* Est. \$600/800

931 ★☐ 1930, 2c "GRAUD" and "MIAL", #M7a, b \$200
 Mial n.h., Graud o.g., in block of ten with eight normal, pos. 53-54/63-64/73-74/83-84/93-94, natural s.e. at bottom, bright color, fine, scarce, fine and scarce, *ex Sicking* PF (1973) cert., errors signed Sloane. Scott \$850 + (hinged) *perhaps 4-5 double errors are known, 500 issued of each* Est. \$300/400

Lot	Description	Start Bid	Lot	Description	Start Bid
932 ★	1930, 2c "MIAL", #M7b O.g. (h.r.), excellent color, fine to very fine, PF (1980) cert. Scott \$425, 500 issued Est. \$140/180	\$100	936 ☒	1930, 4c on F.D., #M2 Tied by "Guam Service Agana Apr. 8, 1930" (Murphy 1.6.1) F.D. double-circle datestamp on Dr. Muller cover, very fine and scarce. Scott \$400 Est. \$150/200	Web \$110



Postal History



933 ☒ 1930, 2c on F.D., #M1 \$350
Horizontal pair (right copy straightedge), nicely centered, tied by "Guam Service Piti Apr. 8, 1930" (Murphy 1.6.1 cancel), F.D. double-circle datestamp on buff cover addressed to Peggy Muller, very fine, scarce and attractive, fine to very fine. Scott \$875 (on FD, used singles), *Piti is especially difficult for First Day usage* Est. \$450/550



934 ☒ 1930, 2c on F.D., #M1 \$300
Horizontal pair (right copy straightedge), nicely centered, tied by "Guam Service Asan Apr. 8, 1930" (Murphy 1.6.1 cancel), F.D. double-circle datestamp on buff cover addressed to Peggy Muller, very fine, scarce and attractive, fine to very fine. Scott \$875 (on FD, used singles) Est. \$450/550

935 ☒ 1930, 4c on F.D., #M2 Web \$150
Tied by "Guam Service Piti Apr. 8, 1930" (Murphy 1.6.1) F.D. double-circle datestamp on Dr. Muller cover, cancel slightly smudged, fine to very fine and rare. Scott \$400, *Piti is especially difficult for First Day usage* Est. \$200/300

937 ☒ 1930, 4c Commercial to Sumay, #M2 Web \$100
Tied by May 6, 1930 (Murphy 1.6.1) cancel, addressed to Cable company from Guam Recorder, fine to very fine, *scarce usage commercially* Est. \$150/200

938 ☒ 1930, 1c Pair, Asan Usage, #M3 Web \$110
Horizontal pair, small corner crease, tied by "Guam Service Asan Aug. 25, 1930" double-circle datestamp, on buff Dr. Muller cover (Murphy 1.6.1) F.D. double-circle datestamp on Dr. Muller cover, cancel slightly smudged, fine to very fine and rare, PF (1989) cert. Scott \$375 (on cover, used single), *the number of fully perforated pairs of the 1c is relatively small, the amount in one collector's opinion is 120..* Est. \$150/200

939 ☒ 1930, 4c, Black Overprint, 2c Red Overprint, #M6-7 Web \$100
Vert. strip of 3 of former, block of 4 of latter (natural s.e. at right), tied by Three Line "Guam Guard Mail / Feb S 1931 / Merizo" pmks. on cover to Agana, blue die impression of "Guam" Seal (as on #s, M3 & M4) corner card, fine to very fine, *ex Sicking brought \$525 in 1989 Siegel auction. Earliest Known Use* Est. \$150/200

940 ☒ 1978 Bicentennial Guard Mail Cover Exhibit \$50
Exhibited on pages and loose, hundreds, incl. scarce cachets (as few as 126 produced), some with U.S. adhesives, also adhesives incl. multiples, full sheets, difficult collection to dupl., clean, fine to very fine Est. \$100/200



941 S Specimen: 1899 Set, "Specimen" in Purple, #1SE-13SE, E1SE \$400
O.g. to part o.g., \$1 tiny thin, E1 small thin, 2c no gum, nice colors, mostly fine or better"values are for fine to very fine appearing with minor faults", \$1 PF (1982) cert. Scott \$1,925, *rarely offered as a complete set* Est. \$600/800



942 S Specimen: 1899, 50c Overprint "Specimen" in Purple, #11aSE \$110
Full o.g. (h.r.), fine or better"values are for fine to very fine appearing with minor faults". Scott \$350 +, *scarce shade with the overprint* Est. \$150/200

Lot Description Start Bid Lot Description Start Bid



943 S Specimen: Special Delivery: 1899, 10c, "Dot in S" Variety, Overprint "Specimen" in Purple, #E1aSE \$150
Full o.g. (h.r.), fresh and fine"values are for fine to very fine appearing with minor faults". Scott \$500 +, *undoubtedly rare with variety* Est. \$250/350



946 O 1851-52, 5c Blue "Missionary", #2 \$10,000
Red cds Honolulu and black cds, clear margins all round, "repaired corner faults at upper right and minor paper wrinkles", handsome very fine appearance, *Census 2-11-CAN-37, ex Ishikawa, Harris* PSAG (2015) cert. Scott \$35,000, *39 used copies exist, "values are for examples with minor damage that has been skillfully repaired" ...* Est. \$15,000/20,000

Hawaii

See Lot 1195



944 X 1852 Stampless With Honolulu Dec 13, U.S. Postage Paid Cancel \$200
Circa 1852 in red with black PAID (all), addressed to San Francisco (HON U.S.28 I), cover slightly faulty incl. missing back flap, but still a scarce marking, average to fine Est. \$250/350



947 O 1851-52, 13c Blue "Missionary", #3 \$6,000
Complete small grid of rectangles cancel, "rebacked over repaired faults", attractive and very collectible example, *Census 3-11-CAN-130* PSAG (2015) cert. Scott \$28,000, *ex Siegel Rarity 1981 auction* Est. \$8,000/10,000

1853 King Kamehameha III



945 X 1858 Honolulu Stampless \$150
Legal size docketed and mailed Dec. 25th to Bangor, Maine with red Honolulu U.S. Postage Paid, red S.F. Jan 20 transit, tattered at left and slight creases, fine overall. Meyer-Harris #242.03, *rare Christmas day usage* Est. \$250/350



948 (★) 5c Blue, Thick White Paper, #5 \$280
Unused, clear to large margins all round (showing portion of another copy at bottom), "light toning at top margin and small paper wrinkle at upper right", fine for this, PSAG (2015) cert. Scott \$1,900 Est. \$400/500



949 P 13c Black, Trial Color Plate \$1,000
Proof on Wove, #6TC3a
Clear to touching at bottom right, "thin spot", very fresh, fine to very fine and rare, *last offered in Harmer's London sale 1998* PF (1982) cert. Scott \$6,000, *rare* Est. \$1,500/2,000

Lot Description Start Bid Lot Description Start Bid



950 ★ 13c, Thick White Paper, #6 \$150
 "Small part o.g.", clear margins all round, attractive color and sound, overall very fine, PSAG (2015) cert. Scott \$875
 Est. \$250/350

951 (★) 13c, Thick White Paper, #6 \$140
 Unused, close to large margins all round, "small scissor cut in lower right corner", deep color, overall very fine, PSAG (2015) cert. Scott \$875 Est. \$200/250



952 ○ 13c, Thick White Paper, #6 \$250
 Complete black grid cancel, just touching to nice margins all round, "large shallow thinning", fine appearance, PSAG (2015) cert. Scott \$1,700 Est. \$400/500

953 ○ 13c, Thick White Paper, #6 \$200
 Traces of black cancel at left, good to large margins all round, "facial abrasions at upper left and lightly soiled", fresh color, fine to very fine appearance, PSAG (2015) cert. Scott \$1,700
 Est. \$300/400



954 ○ 1857, 5c Manuscript Surcharge \$1,400
 on 13c, #7
 Type II (Jackson) surcharge, black and red cancels, margins to touching, "thins", fresh for this, fine appearance, *the 5c provisional surcharge was necessary due to a shortage of 5c stamps just after the transition from Postmaster Whitney to Jackson. Most were made by Jackson's clerk, Alvah Clark, around the start of 1857. New supplies of the 5c stamp (Scott No. 8) were received at the end of June 1857* PSAG (2015) cert. Scott \$10,000, *rare used example of 1857 5c on 13c Provisional surcharge applied by Postmaster Jackson. The Type II numeral with short flag applied by postmaster Jackson, is much rarer than the Type I numeral with long flag applied by his clerk, Alvah Clark. Gregory reports ten examples* Est. \$2,000/2,500



955 ★ 1857, 5c Blue, Thin White Paper, #8 \$130
 O.g., nice margins all round, "tiny thin", excellent color, still very fine, PSAG (2015) cert. Scott \$700, *rarely seen with gum* Est. \$200/250



956 ○ 1857, 5c Blue, Thin White Paper, \$280
 Pair, #8
 Black grid cancels, close to large margins all round, "minor toning spots and vertical crease in both...", fine appearance, PSAG (2015) cert. Scott \$2,000 *scarce in multiples* Est. \$400/500

957 ★★□ 1868, 5c Blue, Re-Issue, #10 *Web* \$140
 N.h., complete pane of 20, 3 o.g., gum crease affecting 3 copies, very lightly toned, overall very fine. Scott \$680+ Est. \$200/250

958 S★□ 1868, 13c Re-Issue, Overprint \$100
 "Specimen", #11SA *Web*
 N.h., n.h. except hinged 2 copies, adherence affecting one copy, couple thin spots in selvage, otherwise fine to very fine. Scott \$600+ Est. \$150/200



959 ○ 1859, 2c Light Blue on \$270
 Bluish White, #13
 Ms. cancel, Plate 3-A IX, "thinned, upper left corner added and frames drawn in, torn", fresh color, average, APS (2001) cert. Scott \$5,000, *rare* Est. \$400/600

960 (★) 1863, 1c Black on Grayish, #15 \$130
 Unused, Pl. 4-A, Type I, pos. 1, clear to nice margins all round, fine, PSAG (2015) cert. Scott \$650 Est. \$200/250

961 (★) 1863, 1c Black on Grayish, #15 \$100
 Unused, Pl. 4-B, Type X, pos. 10, clear to nice margins all round, "small thins", fine to very fine appearing, PSAG (2015) cert. Scott \$650 Est. \$150/200

Lot Description Start Bid Lot Description Start Bid



- 962 ○ 1863, 2c Black on Grayish, #16 \$130
Used, Pl. 3-F, Type V, pos. 5, clear to large margins all round, "vert. crease, small margin tear and soiling", very fine appearing, PSAG (2015) cert. Scott \$850 Est. \$200/250
- 963 ○ 1863, 2c Dark Blue on Bluish, #17 \$300
Corner cancel, plate 5-B, type X, pos. 10, defective, PSAG (2015) cert. Scott \$8,750 *scarce* Est. \$500/700



- 964 ○ 1863, 2c Black on Blue Gray, #18 \$350
Black grid cancel, 4 close margins, plate 5-A, type V, pos. 5, "scuff and stamp is backed by faulty numeral, i.d. (15) in pencil", fine appearance, HPS (2010), PF (1981) certs. Scott \$6,000 Est. \$500/600

1864-65 Numerals



- 965 (★) 1c Black, #19 \$140
Unused, Pl. 6-A, Type I, pos. 1, nice margins all round, fresh, very fine, PSAG (2015) cert. Scott \$550 Est. \$200/250
- 966 (★) 5c Blue on Blue, #21 \$130
Unused, Pl. 9-A, Type VIII, pos. 4, clear margins all round, "tiny repaired upper left corner tip", fine, PSAG (2015) cert. Scott \$900 Est. \$200/250
- 967 ○ 5c Blue on Blue, #21 \$130
Square grid cancel, Pl. 9-A, Type V, pos. 5, close margins all round, "small hole" (minute), fine appearance, PSAG (2015) cert. Scott \$700 Est. \$200/250



- 968 (★) 5c Blue on Blue, #22 \$90
Unused, Pl. 12-A, Type IV, pos. 4, clear to large margins all round, "small tone spot on reverse", very fine, PSAG (2015) cert. Scott \$575 Est. \$140/180
- 969 ★ 5c Blue on Blue, #22 \$80
Large part o.g., Pl. 12-A, Type II, pos. 6, balanced margins all round, "vertical crease", fine to very fine appearance, PSAG (2015) cert. Scott \$575 Est. \$120/150
- 970 ○ 5c Blue on Blue, #22 \$200
Black grid cancel, Pl. 12-A, Type VII, pos. 3, balanced large margins all round, "slight paper penetration from edge of grid cancel", extremely fine appearance, PSAG (2015) cert. Scott \$900 Est. \$300/400

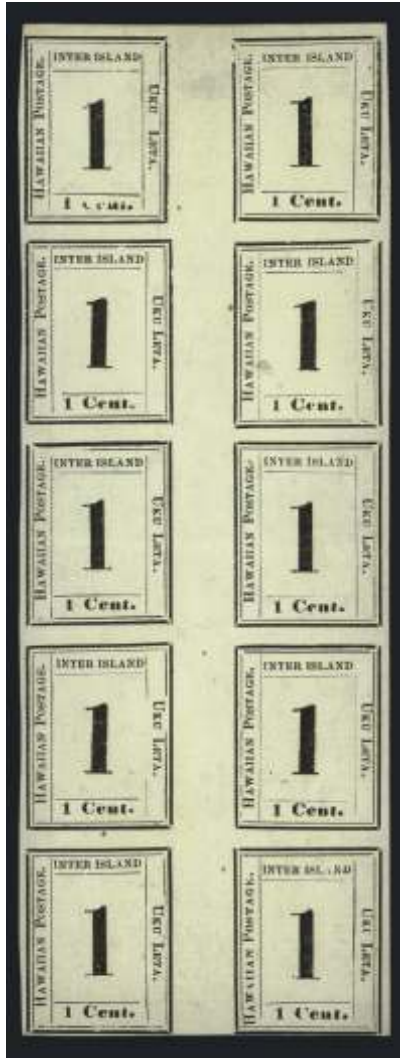
1864 Numerals



- 971 ★ 1c Black, #23 \$130
Full o.g., Pl. 8-A, Type VIII, pos. 7, balanced margins all round, fresh, almost very fine, PSAG (2015) cert. Scott \$300 Est. \$200/250
- 972 (★) 1c Black, #23 \$90
Unused, Pl. 8-A, Type II, pos. 4, clear margins all round, overall very fine, PSAG (2015) cert. Scott \$300 Est. \$140/180
- 973 (★) 1c Black, #23 \$70
Unused, Pl. 8-A, Type VII, pos. 8, clear to large margins all round, fresh, almost very fine, PSAG (2015) cert. Scott \$300 Est. \$100/130
- 974 (★) 1c Black, #23 \$70
Unused, Pl. 8-A, Type X, pos. 9, clear margins all round, fine overall, PSAG (2015) cert. Scott \$300 Est. \$100/130



Lot Description Start Bid Lot Description Start Bid



975 ★★□ 1c, Complete Pane of 10, #23 \$500
 Plate 8-A, pos. 1-10. just clear to nice margins all round, o.g. "except the 2nd and 4th horiz. pairs n.h....with a thin spot in gutter at top between pos. 1 and 2 and a horiz. crease across pos. 5 and 6", fine appearance, PF (2008) cert. Scott \$3,100+ Est. \$700/900



978 ★□ 2c Black, #24 \$650
 Full o.g., complete pane of 10, Pl. 7-A,"horiz. crease at center", very fresh and attractive, choice very fine, PSAG (2015) cert. Scott \$3,100+ Est. \$1,000/1,400



976 (★) 2c Black, #24 \$100
 Unused, Pl. 7-A, Type VI, pos. 6, balanced margins all round, Grade 80 very fine, PSAG (2015) cert. Scott \$325 Est. \$150/200

977 (★) 2c Black, #24 \$70
 Unused, Pl. 7-A, Type VII, pos. 7, good to large margins all round, "light toning and small nick bottom margin", fine to very fine appearance, PSAG (2015) cert. Scott \$325 Est. \$100/120



979 (★) 1865, 1c Dark Blue, #25 \$150
 Unused, Pl. 11-A, Type X, pos. 10, large margins all round, "light toned spot", extremely fine appearance, PSAG (2015) cert. Scott \$350 Est. \$250/300

980 (★) 1865, 1c Dark Blue, #25 \$100
 Unused, Pl. 11-A, Type X, pos. 2, clear margins all round, fine to very fine, PSAG (2015) cert. Scott \$350 Est. \$150/180

Lot Description Start Bid Lot Description Start Bid



- 981 (★) 1865, 2c Dark Blue, #26 \$120
Unused, Pl. 10-A, Type VI, pos. 6, balanced margins all round, Grade 80 very fine, PSAG (2015) cert. Scott \$350
..... Est. \$180/220
- 982 (★) 1865, 2c Dark Blue, #26 \$90
Unused, Pl. 10-A, Type III, pos. 7, clear to large margins all round, very fine, PSAG (2015) cert. Scott \$350
..... Est. \$130/160
- 983 ★ 1863, 2c Vertically Laid Paper, #28a \$70
Full o.g. (h.r.), worn impression at top left, nice margins all round, lovely very fine appearance. Scott \$350
..... Est. \$100/140

1864-86 Bank Notes



- 984 P 2c Plate Proof on India, #31P3 \$100
Nice margins all round, choice very fine. Scott \$350
..... Est. \$140/180



- 985 P□ 5c Red Brown, Trial Color Plate \$400
Proof on India, Block of 4, #32TC3d
Nice margins all round, choice very fine. Scott \$1,800
..... Est. \$600/800



- 986 P 5c, Plate Proof on India, #32P3 \$100
Nice margins all round, choice very fine. Scott \$350
..... Est. \$140/180



- 987 ○□ 5c Kahului Maui Cancel, \$200
Block of 4, #32
In purple, light cancel, reinforced, fine to very fine, *used*
February 1900 to June 1900. Meyer-Harris #271.017, *very*
rare..... Est. \$300/400



- 988 P 18c, Plate Proof on India, #34P3 \$100
Nice margins all round, slight wrinkling at top, overall very fine. Scott \$350 Est. \$120/140



- 989 (★)□ 18c, Block of 10, #34 *Web* \$140
Unused, imprint block, well centered, fine to very fine. Scott \$1,140+ Est. \$200/300

- 990 ○ 1886, 2c, Oahu Railway & Land Co., \$100
Ticket Office Honolulu Cancel, #43
Blue cds with short letters, thin in upper right corner, fine to very fine, *Davey unlisted, 1RRRR, very rare railway postmark*
..... Est. \$150/200

- 991 ○□ 1883, 10c, Block of 10, #45 *Web* \$70
Imprint corner copy, Honolulu Jan 31 1896 cancels, some paper wrinkles, slight separations, fine to very fine. Scott \$275+ Est. \$100/140

Lot	Description	Start Bid	Lot	Description	Start Bid
992	★□ 1883, 10c, Sheet of 50, #45 N.h., bit of selvage damage upper left and some soiling, slight reinforcing resulting in 8 l.h. copies, still scarce and desirable piece, excellent color, fine to very fine. Scott \$4,800+	Web \$1,000 Est. \$1,200/1,400			



993	★□ 1883, 50c Red, Block of 4, #48 Dist. o.g., one copy small thin at top, fresh, fine overall. Scott \$1,050	\$150 Est. \$200/250
994	★□ 1890, 5c, Block of 4, #52C Full o.g. (h.r.), excellent color, fine to very fine. Scott \$575	\$140 Est. \$200/250

1893 Provisional Issues

998	★ 12c, Double Red Overprint, #62d Both overprints heavy, l.h. marginal copy, immaculate and very fine, PSAG (2015) cert. Scott \$2,000	\$1,200 Est. \$1,200/1,400
-----	---	-------------------------------



999	★ 12c, Double Red Overprint, One Split, #62d Both overprints heavy, o.g. (h.r.), fine to very fine and attractive. Scott \$2,000+	\$500 Est. \$800/1,000
-----	--	---------------------------



1000	★ 12c, Red Overprint, #63 L.h., large copy, Grade 90J an extremely fine jumbo, PSE (2014) cert. Scott \$165++	\$270 Est. \$270/300
------	--	-------------------------



995	▲ 1c Red Overprint, Vertically Split Overprint, #55 Horizontal pair, tied by light duplex cancels on small piece, "few light toned spots along the center vert. perfs.", very well centered, strong color, very fine overall, PF (2006) cert.	\$300 Est. \$400/500
996	★ 2c Red Overprint, No Period After "GOVT", #56b O.g. (h.r.) in block of 4, fine to very fine. Scott \$325+	Web \$90 Est. \$120/150
997	★★ 2c Red Shifted Overprint, #57 Marginal vert. pair, n.h., l.h., showing 1893 at top, choice very fine	\$100 Est. \$200/300

1001	★□ 12c, Red Overprint, Block of 4, #63 L.h. to o.g., slight reinforcing, nicely centered, very fine and attractive. Scott \$1,000	\$250 Est. \$350/450
1002	★★★□ 2c, Black Overprint, Block of 4, #65 N.h. (2-one with inclusion reverse only), l.h. (2), very well centered for this value, immaculate and very fine. Scott \$570	\$140 Est. \$200/250

Lot *Description* *Start Bid* *Lot* *Description* *Start Bid*



1003 ★ 2c, Black Overprint, Shifted Overprint, #66 \$100
 O.g. horiz. pair, s.e. at left, showing 1893 at top, fresh and very fine Est. \$200/250



1004 ★□ 12c, Black Overprint, Margin Block of 4, #69 \$375
 O.g. (h.r. at top), well centered, overall very fine. Scott \$1,600 Est. \$500/700



1005 ★□ \$1, Black Overprint, Block of 4, #73 \$150
 O.g. (h.r.), decent centering, fresh, fine to very fine. Scott \$700 Est. \$250/300

1006 ○ 1894, 2c Used Accumulation, #75 \$100
 Few thousand (we guess) in glassines, in small stockbooks, few identified by towns, many not, incl. multiples, completely unchecked for cancels, good luck! generally fine Est. \$200/400

1007 ☒ 1894, 2c Cover Group, #75 \$200
 30 covers, all used in 1898 from Honolulu or Hilo, mostly addressed to Dr. N.L. Moon in Hilo, fine Est. \$300/400



1008 ☒ 1894, 5c on Cover, #76 \$140
 5c very fine, tied by red double circle June 1897 cancel on mourning cover to Austria, a gorgeous item, very fine. Meyer-Harris #283.013 Est. \$200/300



1009 ○ 1899, 2c Rose, "Flying Goose" Flaw, #81 \$140
 Light purple target cancel, exceptional centering, bright color, Extremely fine and choice, a gem used example. Scott \$350 Est. \$200/250

1010 ○□ Official: 1896 Set, Blocks of 4, #O1-O6 *Web* \$110
 All with Foreign Office, Honolulu HI double circle strikes, couple with light tone spots from old hinging, fine to very fine, ex *Twigg-Smith*. Scott \$500 + (singles) .. Est. \$150/200

Lot Description Start Bid Lot Description Start Bid



1011 ★ Philippines: 1925, 4p, Imperf, #352a \$400
L.h., 4 margins, fine to very fine, Verified by Ray Coughlin.
Scott \$2,200, *only 300 issued* Est. \$600/700



1012 ★ Philippines: 1925, 10p, Imperf, #353a \$525
Few gum skips, 4 balance margins, very fine, Verified by Ray Coughlin. Scott \$2,750 *only 200 issued* Est. \$750/850

1013 ★✉ Philippines: Wrappers; 1908, 2c Rizal, UPSS #W6 Web \$70
Mint, fine to very fine. Scott #W4 var. UPSS \$320
..... Est. \$100/150



1014 ★ Ryukyus: 1952, 100y on 2y Rose Violet, #17 \$300
L.h., signed in pencil, fine to very fine, *signed Bloch*. Scott \$1,600 Est. \$500/600



1015 (★) Ryukyus: Revenues; 1958, Set, #R9-R16 \$400
Ungummed, very fresh, fine to very fine. Scott \$1,375
..... Est. \$450/600

U.S. Collections & Various

1016 ★○ Fabulous Collection 1847 to 1940 Web \$10,000
Collection in Lighthouse hingeless album, highlights incl. #9X1, 1, 2, 7, 9 (4), 12, 14 (single and pair), 20, 22, 23, 29, 30A, 31, 37, 67 (2), 70 (shades), 72 (2), many grills, Pictorials complete, Banknotes, Columbians complete mint or used, Trans Miss. complete mint or used, many Washington/Franklins mostly mint incl. 424-440, 505 strip of 3, 551-573, 630, Kansas-Nebraska complete, Airmails incl. mint C1-C6, C13-15 (dist. gum), many mixed mint and used Special Deliveries, Postage Dues and Officials, unused Ducks thru the 1970s, many better items to be found, must inspect, mixed condition Est. \$13,000/16,000

1017 ★○ Balance of Extensive Collection Web \$6,500
On Harris pages to 1939 with earlies used, starting #1-2 with all early issues well represented with occasional mint incl. #37-38, 1869s complete used, Columbians complete mint and missing only the more expensive issues, strong Washington-Franklins with coils, Special Delivery complete mint except #E4, Dues mostly complete mint or used, Parcel Post and "JQs" complete mint, Airs complete mint, etc., 19th century mixed condition and annotated, 20th Century mostly fine to very fine, needs careful inspection Est. \$10,000/15,000

1018 ★○ Mint and Used Collection Web \$5,000
In Scott hingeless album to 1987, 19th Century mostly used and 20th Century mostly mint and with a high degree of completion, mint highlights incl. #224-228, 240 (2), 244, 294-299, 300-312, 323-27, 369 (3), 331-342, 374-382, 397-404, 405-423, 424-440, 460, 478-480, 505 block of 9, 523, 524, 527, 630, mostly complete to 1987, used incl. #1, 18, 20, 37, 70, 71, 112-122 with 120 and 121 regummed, 242, 261a and 277, must inspect coils, generally fine to very fine Est. \$7,000/9,000

1019 ★○ Valuable Mint and Used Collection Web \$5,000
Many hundreds of mint and used on homemade pages incl. mint and used classics, mint #230-245, 285-293, 294-299, 300-308, 323-27, 397-400A, and many mint or used Washington-Franklins, 479, 547, 551-573, 581-591, 658-679, misc. plate blocks incl. #302, Airmails incl. C1-6 mint, C7-9 plate blocks, C10-12 plate blocks, used highlights incl. #1, 7 (3), 10, 15, 17, 68-72, 113-121, and 283, must inspect, mixed condition. 2012 Scott \$64,561 (Owner's) Est. \$7,000/9,000

1020 ★○ Better Collection Web \$5,000
Collection in hingeless album with a high degree of completion, better incl. #1, 2, 12, 14, 15, 20, 22, 29, 30A, 72, 75, 1869 Pictorials complete, 145-155, Columbians mint to 30c, 240-243 and 245 used, many small Bureaus mint, Trans-Miss. mint to 10c, 291 and 293 used, 300-311 mint or unused, 369 many mint Washington/Franklins, mint 551-573, 630, Kansas-Nebraska, C1-C6, C13-15 used, good Special Deliveries, Parcel Post, many Postage Dues, Officials, Shanghai complete except for K16, normal with mixed condition in the early period and better quality in the 20th Century, many nice stamps to be found, otherwise fine to very fine. Scott approximately \$62,000 (Owner's) Est. \$7,000/9,000

<i>Lot</i>	<i>Description</i>	<i>Start Bid</i>	<i>Lot</i>	<i>Description</i>	<i>Start Bid</i>
1021 ★○	Mint and Used Better in Glassines Collection to 1962 in album where the better material was removed and inserted in glassines and onto stockpages, occasional dupl. mint and used, incl. Columbians to \$1 used, \$2 mint well centered, Washington-Franklins mint and used with coils, #479-480, 310, 630 mint, better Dues mint or used with J6 o.g., classics used with #14-15, 17, mint 26 pair with double perfs, 1869s to 24¢ with #118, 119, Presidential pl. blocks to \$5, Airs with C14-15 used, C1-3 (2 of each mint), C6 mint block of 4, single, Parcel Post complete mint except 50¢ used, 19th century mixed condition, 20th Century mostly fine to very fine Est. \$5,000/7,500	<i>Web</i> \$3,500	1027 ○	Bargain Box Material Selection of mostly used classics to 1910s on #102 sales cards, noted 1861s to 15¢, Grills, 1869s to 30¢, large Bank Notes to 90¢, some dupl., some back of the book, very mixed condition, inspect. Scott \$80,167 (Owner's) Est. \$3,500/4,000	\$2,500
1022 ★○	Collection in Scott Album to 1961 Hundreds of used and mint mounted in album, incl. used #1, 2, 12, 14, 15, 17, 1857s to 30¢, 1861s to 90¢ #76 on patriotic cover, 1869s complete to 30¢, Bank Notes to 90¢ values, 1890s complete used, Columbians used thru \$4, Trans-Miss. thru 50¢ used, mint and used Washington-Franklins, Kansas-Nebraska complete mint, Airmails C1-12, C18 mint, Special Delivery complete used, good showing of Postage Dues, Officials, and Revenues, inspection is recommended, mixed condition Est. \$5,000/6,000	<i>Web</i> \$3,000	1028 ○	Fancy Cancel Accumulation Approx. 3100+ mostly organized by category on stockpages to 2¢ Bureaus, starting with #11s and incl. 1869 Pictorial issue 1¢-2¢, Columbians to 10¢, sorted by various colors, Pairs, geometrics, etc., some on pieces, s.o.n., letters, many Bank Notes, decent strikes overall, fine to very fine overall Est. \$3,000/4,000	<i>Web</i> \$2,400
1023 ★○	Intact Collection From Estate Hundreds of used and mint to 1990 in Scott album and homemade Airmail album in mixed condition but should be some good finds, classics unused incl. #2, 26A, 39 used, mint or used 1861s to 90¢, used grills to 30¢, 1869 used to 12¢, Columbians unused or mint thru \$3, Trans-Miss. to 50¢ mint, mint or used Bureaus to \$5, good showing of mint or used Washington Franklins, mint 404, and from 1924 on appears complete mint to 1990 except no White Plains, Airmails mint or used incl. C13-15 mint with minor faults, huge catalog value, must inspect, mixed condition Est. \$4,000/5,000	<i>Web</i> \$3,000	1029 ★○	Nice Collection in Album Scott album with hundred of better stamps mint or used, incl. 1869 Pictorials used complete, Columbians complete used or unused, Trans-Miss. complete mint or used, Pan-Am mint, Kansas-Nebraska mint, Prexies complete mint, C1, C3-6 mint, C18 (2), Q1-11 mint, and mint F1 (2), must inspect, fine to very fine appearance Est. \$3,000/4,000	<i>Web</i> \$2,000
1024 ★○	Mint and Used Collector's Stock In 5 binders to 1960s and loose, incl. early 20th Century blocks of 4, later with dupl. to 1960s, mostly early to mid 20th Century mint, scattered better incl. #12 used, 32 used trip of 3, mint Columbians to 15¢, n.h. 523, C13-15 mint and used, used strength starts with 1869 issue to 30¢ and later with Airs, Bank Notes to 90¢, etc., few Possessions (no Hawaii), 19th century mixed condition, 20th Century mostly fine to very fine Est. \$4,000/6,000	<i>Web</i> \$3,000	1030 ★	19th Century to 1940s Oldtime Lot Hundreds in glassines, 1930s on probably bought as new issues, strength in 20th century with few 19th Century mostly used incl. #241, 263, Columbians mint to 30¢, some Washington-Franklins, Airs incl. C18 (3 n.h., 2 o.g.), also Special Delivery, 1930s on in blocks or quantities mostly n.h., great lot for stock, generally fine to very fine, needs inspection Est. \$3,000/3,500	\$2,000
1025 ★○	High Catalog Accumulation Hundreds of mint and used in glassines, identified by Scott numbers, dupl., classics to 1930s, noted Columbians used to \$1, material for bargain boxes in mixed condition, inspection recommended. Scott \$139,416 (Owner's) Est. \$4,000/5,000	\$3,000	1031 ★○	High Catalog Classics Group of selected mint and used in small stockbook, all higher cat. items in mixed condition, noted #1 used, 67 used, apparent mint 75-78, Columbians mint and used to \$3, some "dogs", some good, excellent material for internet sales, inspection a must, mixed condition. Scott \$45,956 (Owner's) Est. \$3,000/3,500	\$2,000
1026 ★○	Collection in American Album Hundreds on pages mixed mint and used to 1939, incl. used #1, 14, 15, 17, mint 38, 1861, to 90¢, various grills to the 30¢, 1869s complete, large Bank Notes to 90¢ values, 1890s mint or used incl. 229, Columbians mint or used to \$2 and mint \$4, 278, Trans-Miss mint or used to 50¢ and used \$2, 311-313, mixed mint or used to 1939 incl. used Kansas-Nebraska, Airs incl. C1-6 mint, C13-14 used, C18 mint, numerous mint and used Officials, Special Delivery, and Dues, must inspect, mixed condition . Est. \$4,000/5,000	<i>Web</i> \$2,800	1032 ★○	Collection in Harris Album Hundreds of used and mint to 1973, classics used incl. 1851 issue to 12¢, 1857 issue to 30¢, 1861 issue to 90¢, F Grills compl., 1869s compl., large Bank Notes to 90¢ values, Columbians compl. to \$1, #278, scattered Washington-Franklins, modern postage, Airs incl. C1-C6 mint (C2 used), some other Back of the Book, high catalog, mixed condition Est. \$2,500/3,000	<i>Web</i> \$1,800
			1033 ★○	Collection to 1930s Few hundred in old album, classics used incl. #1, 15, 36-38, 72, various grills to the 30¢, 1869s complete, various large Bank Notes to 90¢, Columbians to \$3, 1895 to both \$1, Trans-Miss. to 50¢, Kansas-Nebraska complete, back of the book incl. Airmails, Parcel Post, Officials, Newspaper, Postage Dues, Revenues and U.S. Possessions, high cat., inspect, mixed condition Est. \$2,000/3,000	<i>Web</i> \$1,500
			1034 ★○	1922 to 1976 Annotated Collection On pages, starting 1922-25 issue complete mint and used and complete except the more expensive values, also pl. blocks mostly complete except some of early issues/expensive items, incl. #559, 571 pl. blocks, coils, mint blocks of 4, 578-579, 595, 630 mint/used, 621 pl. block, also F1 incl. "SHANGHAI CHINA" overprint, FA1, fine to very fine Est. \$1,500/2,000	<i>Web</i> \$1,000

<i>Lot</i>	<i>Description</i>	<i>Start Bid</i>	<i>Lot</i>	<i>Description</i>	<i>Start Bid</i>
1035 ★○	Better Accumulation Nice assortment in banker box of collections, covers and miscellaneous on stockpages, incl. red box of singles on #102 cards with retail over \$6000, collector of mint in Scott album from the late 1920s with many nicely centered, old album on blank pages from 1851 with nice cancels, some plate # singles, Bank Notes, Bureaus, many mint and used Washington-Franklins, a collection of booklet panes on Scott pages, and other misc. interesting items, great lot for retail or internet sales, generally fine to very fine Est. \$1,200/1,500	\$1,000	1042 ○	Mostly Used Collection on Handmade Pages Few hundred, 1852 to 1938 incl. used #76, 97-98, 153, 229, Columbians and Trans-Miss. issues to 50¢ plus 242 (faults), 404, nice run of Washington-Franklins, plus few o.g. commemoratives from 1920s, some faults in 19th century, fine overall Est. \$800/1,000	\$650
1036 ★○	Collection in National Album Early classics incl. used #1, 30A, 38, 63, 68-69, 71-73, 87-89, 92-98, 112-19, 145-54, 156//61, 181-90 (no 184), 215-18, 219-29 (no 228), then mostly mint 230-239, mint/used 264-66, used 285-90, mint 294-299, 300-309, decent representation of Washington-Franklins, mint 581-591, relatively solid to 942, incl. Prexie singles to \$5 and coils complete, generally fine Est. \$1,400/1,700	\$950	1043 ★○	Collection in 3 White Ace Albums Scattered early used classics incl. #68-70, 73//78, 92//97, 112-14, 116-118, jumbo 121, 145-155 (no 154), 153-163, 182-191 (no 188), 215-218 plus scattered small Bank Notes, mint or used 230-239, 285//91, 294-299, 323-327, 397//402, then virtually all mint complete from 548 onward, Kans.-Nebr. complete less 5c Nebr., 630 very fine n.h., onward to 909-21 plus a few later, incl. Recalled Legends sheet and die-cut Bugs Bunny, Airs incl. C1-6 used, mint C10a and C18 and onward, plus some decent back of the book, generally fine to very fine Est. \$800/1,000	\$600
1037 ★○	Graded Balance Lot 19th to mid 20th Century, 16 graded items mint and used items we could not run individually, all graded 85 and higher, take a look, very fine to extremely fine. Scott Stamp Values \$2,684 Est. \$1,300/1,500	\$900	1044 ★○	General Collection 19th & 20th Century mint and used collection in a Scott Specialty album, incl. early classics, Bank Notes, regular issues, commemoratives, Washington-Franklins, back of the book, etc., features Pan-American, Jamestown and Kansas-Nebraska sets all complete, condition varies. Scott \$13,867 (Owner's) Est. \$750/1,000	\$550
1038 ★○	Stock From Back Room 2 banker boxes with thousand mixed mint and used, best being 8 retail counter books with classics to Possessions, large amount on stock sheets, and many sorted into envelopes, huge catalog value, must inspect, mixed condition Est. \$1,200/1,500	\$850	1045 ★○	Collection in Minuteman Album Scattered used classics and nice run of large and small Bank Notes, plus #112//119, 230-240, 285-291, mint 294-299, used 300-311, 323-327, 331-341, 397-400A, mint 401-404, used 551-573 and 578-591 mint or used, then generally all mint, incl. 630 n.h., 730-731, 735, 750-751, 803-834 plus all coil line pairs and mint to mid-1980s incl. 1030-53, 1278-95, 1581-1612, etc., occasional fault, but overall fine to very fine Est. \$750/1,000	\$500
1039 ★○	2 Decade Clean Up 8 banker boxes put together by a dealer cleaning up accumulated misc. material, everything from beginner albums to a mint sheet of 100 of Scott #525 (cat. \$600+), there are folders of part mint sheets, plate blocks, State and Federal Revenues, souvenir cards, "Rare Stamp Portfolio," multiple souvenir sheets (some to 100+), a number of U.S. albums and a huge amount of loose material, album pages, glassines, envelopes, stockbooks, etc., owner says much unchecked, so worth careful inspection, generally fine Est. \$1,000/1,500	\$750	1046 ★	Collector's Freak/Error Holding Few hundred pieces bought through Ebay/auction or privately, mostly freaks from 1950s to recent incl. paper folds, image offset, gutter snipes, tagging errors, imperfs, perf shifts, etc. with #2566b (cert.), 2055-2058b, etc., rarely seen in this quantity, fine to very fine Est. \$750/1,000	\$500
1040 ★○	Collection in Minuteman Albums In 2 vols. incl. a scattering of used large and small Bank Notes, #230//39, 285-90, 294//99, 300-10, 323-26, modest run of mint and used Washington-Franklins, 397//404, mixed mint and used from 551 forward, mint 630, then virtually all mint complete to 1980s plus used Q1-12 and other back of the book, better mint Ducks RW1-3, RW5-6, RW10-19, RW22, RW24-28, RW30-36, RW38-56, a substantial mint U.N. collection, 1951-90 incl. 38 in vol. 2 (not counted), generally fine Est. \$1,000/1,300	\$750	1047 ★★□	1924 to 1983 Plate Block Collection <i>Web</i> Mostly n.h., starting #614, 616-621 (n.h.), Presidentials complete, also Airs, earlies mostly commems., later with pl. blocks of 20, fine to very fine Est. \$750/1,000	\$500
1041 ★○	Collection in Albums Hundreds in 2 albums on White Ace pages, highlights incl. used #1, 1861s to 90¢, 1869s to 30¢, Bank Notes to 90¢ used, mixed mint and used Washington-Franklins, mint 551-571, 581-591, Kansas-Nebraska complete, 630, 803-34, C10a, C18, and over \$300 face in \$1 to \$14 blocks, mixed condition Est. \$1,000/1,500	<i>Web</i> \$700	1048 ★○	Mint and Used Accumulation <i>Web</i> Banker box filled with mint and used incl. back of the book, stockpages, singles, postage, Revenues, sets and singles, many better items incl. Bank Notes, used #292, mint 340, mint 397-400A, used Philippines overprints used incl. #237, many items to find, great for retail or internet sales, must inspect, mixed condition Est. \$700/900	\$400
			1049 ★○	Better Box Lot Banker box stuffed full of front and back of the book issues on pages, in boxes, Scott album with mint plate # coil collection, stockpages loaded with stamps which incl. many mint and used Washington-Franklins, 3 sheets of #629, Parcel Post, Special Delivery, and U.S. Possessions incl. Philippines, Canal Zone and Cuba, many finds to be had, generally fine to very fine Est. \$600/800	\$400

<i>Lot</i>	<i>Description</i>	<i>Start Bid</i>	<i>Lot</i>	<i>Description</i>	<i>Start Bid</i>
1050 ★○	Collection Remainders Hundreds of mint and used in albums, eight different collections in two banker boxes, one in White Ace albums incl. used 1861s to 90c, grills to 30c, 1869s to 30c, large Bank Notes to 90c, used 277, Washington-Franklins to \$5 used, some back of the book incl. Airmails, American album with Columbians to 50c used and Trans-Miss. to 50c used, Scott album with postage to \$5, Victory album with mint and used to 1959, and other misc. albums, must inspect, mixed condition Est. \$600/700	\$400	1058 ★○	Accumulation From Estate More than a dozen albums, binders and folders, incl. Scott National album with scattered Bank Notes, mint or used #230-38, 285-90, 295-98, 614-19 mint, 730-31, 735, Parks, onward to 22c period, Harris Liberty, mint 2c reds, some Farleys, Prexies, onward to 8c period, All-American album somewhat similar, Scott 20th Century plate block album incl. plate of 294, 617 tops, Farley souvenir sheets, 3c purples, some Prexies and Famous Americans, Scott National mostly used, large Bank Notes, used 397-404, Kans.-Nebr. mint or used, Q1-12, then smaller albums, one just Revenues, plus a folder of Duck and fish stamps on and off license, incl. RW1 on license, generally fine Est. \$400/600	\$300
1051 ★○☒	Nice Banker Box Variety Box incl. 2 volume collection of mostly commemoratives and earlier incl. #154, 155, 162 (red cancel), 217, 404, C1-C6, National album with used from 1851 to 1990 incl. some Bank Notes, Washington-Franklins and appears most were picked for centering, and a small group of covers from mostly classic period, few patriotics and a few foreign, interesting group, must inspect, generally fine to very fine Est. \$500/700	\$400	1059 ★	Collection in Scott National Album All l.h., incl. #367, 370, 372, few Washington-Franklins, 597-623 (no 599A, 613), also 597-606 line pairs (no 599A), a few 2c reds, all Farley souvenir sheets, Parks, standard pairs of pos. pieces, Prexies and coils complete (singles and line pairs), then basically complete to 1363, Airs C1-12, C16-75, plus back of the book, very clean lot, fine to very fine Est. \$400/500	\$300
1052 ○	Collection in American Album 19th & 20th Century mostly used collection, nice assortment of early issues, also Airs, Revenues, some Ducks, worth a look, generally fine. Scott \$7,188 (Owner's) ... Est. \$500/750	\$400	1060 ★	Oldtime Group Mostly mint assortment of over 100 on 3 x 6 manila dealer stockcards, also a misc. array of Telegraphs, neat lot, should be reviewed, fine Est. \$400/600	\$300
1053 ○	Interesting Early Group Mostly 19th Century in an old Dansco stockbook, incl. various 1851-57 with #17, 1861 and 1869 issues with 1c-3c, 6c-12c, 24c and 30c, also back of the book featuring some cut squares, Officials (a few with fancy cancels), Post Office seals, Telegraphs, Dues, Revenues, etc., generally fine Est. \$500/750	\$400	1061 ★★★	Attractive Mint Group 19th & 20th Century small accumulation of Columbians 2c-10c, Trans-Mississippi 1c, 4c, 5c, Pan-American 4c, 8c, 1902-03 issues 3c, 4c, 5c, 6c, 8c and more, incl. n.h. and l.h., nice group, generally fine to very fine Est. \$400/600	\$300
1054 ★★★	1893 to 1930 Mint Commemoratives <i>Web</i> O.g. (few glazed gum) to n.h., incl. Columbians to 30c (dist. gum), Trans-Miss. complete to 8c, Pan-American, Louisiana Purchase and Jamestown sets, etc., fresh colors, generally fine. Scott \$3,500+ Est. \$500/600	\$400	1062 ★★☐	Better Sheets N.h. sheet file with premium sheet, incl. #627, 906, C7 (2), C8 (2), C9, and other modern sheets, fine to very fine appearance Est. \$400/500	\$300
1055 ★★☐	Plate Block Collection In a Harris Album, all appear n.h., incl. all Farley souvenir sheets, plates of #734, 906, scattered plates through the 8c values, Airs incl. C46, regular issues plates incl. 832-834, 1030-53 and 1278-95, fine to very fine Est. \$500/600	\$350	1063 ★○	Accumulation on Dealer Sales Sheets Couple hundred incl. used se-tenant blocks, n.h. 1930s plate blocks incl. #834 (2 one o.g.), few Federal and State ducks, mostly fine or better Est. \$400/600	\$300
1056 ★	Better Remainder Lot Customer had a good eye as there are many very fine in lot, noticed mint #233, 294-298, 368, 373, 547, 573 (2), 630 (2) and used 35 with big margins, 122 with cert., and much more, take a look, very fine appearance Est. \$500/700	\$350	1064 ★○	Estate Accumulation 14 collections, more mint than used with a few useful items, good face value, inspect, fine Est. \$350/500	\$250
1057 ★○☒	Wells Fargo Collection <i>Web</i> 18 covers, noted usages from Virginia City, Chinese Camp, San Francisco, also unused envelope for Northern Pacific Express, San Francisco usage for Pacific Union Express, group of adhesives (many forgeries, some genuine), worth a look, mixed condition Est. \$500/700	\$350	1065 ★★	Graded 1930s Group N.h., between #632 and 790, encapsulated lot of 26 items, incl. grade 95 (9) and grade 98 (12), nice group. SMQ \$1,889 Est. \$400/500	\$200
			1066 ★○☒	Remainder of Estate Banker box loaded with \$500 in face, FDs, PNC covers, some better singles incl. #15 used, Washington-Franklin plate blocks, and other items, must inspect, mixed condition Est. \$300/400	\$200
			1067 ★★★	Early 20th Century Accumulation Mostly mint organized on stockpages, noted blocks of #294, 323-324, 328-329 and 517, 2c reds, also White Plains sheet o.g., some misc. Foreign, inspect, generally fine Est. \$300/400	\$200

<i>Lot</i>	<i>Description</i>	<i>Start Bid</i>	<i>Lot</i>	<i>Description</i>	<i>Start Bid</i>
1068 ★★	Better Remainder Lot Group of 13 items left over from an estate, noticed #1687m error sheet, set of mint Kansas-Nebraska most n.h., 803-834 n.h., set of 1384a precancel plates, C24 plate block, and some postage, generally fine to very fine Est. \$300/400	\$200	1079 ▲	4 Boxes of Kiloware On and off paper, on paper close cut topical related, off paper well organized dupl older pl. blocks, fine Est. \$150/200	\$80
1069 ○	Massive Off Paper Hoard 5 banker boxes filled with neatly arranged used off paper from #279B to about 2500, the vast majority are packed per 100 in glassines and identified by Scott number, in only a few cases is there more than one glassine per Scott number, some of the earlier material is made up as bundleware, countless thousands of hours of work are represented in this lot, fine Est. \$300/400	\$200	1080 ★○	Collector's Balance In 4 boxes, incl. mint modern Aerogrammes, FD's, commercial 1940s and later covers, modern used packets, scattered Foreign, etc., fine overall Est. \$200/300	\$10
1070 ★★	Mint Collection Starting with the 1922 definitive issue and continuing on to the 1980s, incl. #551//565, 614-623, 632-642 (no 634A), 692-701, 704-15, 730-31, 735, 750-51, Parks, 803-34 plus coils and then appears solid, incl. 1053, 1278-95, 1581-1612, etc., plus Recalled Legends of the West and a fair amount of postage material, very clean, fine to very fine ... Est. \$300/400	\$200	1081 ★○	Small Mint and Used Accumulation 100+ somewhat sorted, incl. mint Officials, cut squares, used Bank Notes, etc., mixed condition Est. \$100/150	\$10
1071 ★○	Banker Box of Collections Mint and used, mostly in Scott Nationals, lots of desirable material ranging from classics, large and small Bank Notes, Columbians, Washington-Franklins, Fourth Bureau, Farleys, #803//834, 1030-1059, Airs, Parcel Post, Ducks mint and used and other back of the book, inspect to appreciate, fine Est. \$300/400	\$200	<i>Postage & Modern Collections</i>		
1072 ○	Large Bank Note Used Accumulation Several hundred 1c to 90c used copies, noted shades, cancel interest incl. targets, colors, stars, letters, wedges, etc., inspect for value, mixed condition Est. \$300/500	\$200	1082 ★□	Modern Accumulation N.h., 1930s to 2010 in binders and files in two banker boxes, good selection of sheets and booklets, plate blocks and strips, owners face \$4230 and one book of better items with owners cat. \$2000, generally fine to very fine Est. \$2,200/2,500	\$1,700
1073 ○	1873 3c Cancel Collection <i>Web</i> Mounted on pages, negative number group of a couple hundred or more singles and 41 covers, cancels #1 to 32, well organized and attractive, fine to very fine lot, <i>ex Stewart</i> Est. \$300/500	\$200	1083 ★□	Large Postage Accumulation N.h., four banker boxes full, with a collection in 8 albums with many sheets, plate blocks, singles, one box is full of loose plate blocks and booklets and single lots, noticed 2 Recalled Legends and a Bugs imperf., majority 25c to 39c, huge amount of face value, bring your calculator for this one, generally fine to very fine Est. \$2,200/2,500	\$1,500
1074 ★□	Better Sheet Lot N.h., around 100, most value in Presidentials complete to 25c (also some scrap), also Overrun Countries with dupl., few 3c purples, 2 #906 sheets etc., clean, fine . Est. \$300/400	\$200	1084 ★□	Large Hoard in Boxes N.h., thousands running from #610 to the 41c era, contains sheets and part sheets with some used, huge face value, bring a calculator, generally fine to very fine Est. \$2,000/3,000	\$1,500
1075 ★★□	Plate Block and Block Collection N.h. (some early o.g.) on Minkus pages, 1925 to 1942, 2c reds, Park sets perf and souvenir sheets, etc., generally fine to very fine. Est. \$250/300	\$150	1085 ★□	Accumulation in Boxes N.h., 3 banker boxes with plate blocks singles and sheets, lots of 4c and 5c sheets, and booklets, owners face value \$2905, generally fine to very fine Est. \$1,300/1,500	\$1,100
1076 ○	Classic Group Used, 3c (34) grills (unchecked, with some interesting cancels), #134 (6, plus several faulty not counted), group of 1851 3c (45, unchecked), War Dept. Official set, inspect, mixed condition Est. \$200/300	\$150	1086 ★□	Modern Accumulation N.h., 2 banker boxes of modern running mainly from mid 1990s to 2013, included are sheets, booklet blocks, year sets and etc., most is new issues never mounted in collectors albums, noticed specialty items incl. Recalled Legends of the West, one box is year sets and mint postal cards, huge face value, must inspect, fine to very fine Est. \$1,000/1,200	\$700
1077 ○	1861 to 1867 3c Accumulation 435 used copies, noted shades, grills, cancel interest incl. targets, color, Paid, stars, inspect for value, mixed condition Est. \$200/300	\$150	1087 ★□	Large Sheet Accumulation N.h., collection of sheets from 1935 to 1963, better items incl. #735, scattering of Washington Bicentennials, Army-Navy with duplication, 855, 906, and many 3c purples, must inspect, generally fine to very fine Est. \$800/900	\$650
1078 B★	Small Collection of Better Booklet Panes #375//720b, 14 panes, mostly o.g. incl. 463a, and 502b both n.h., and 583a o.g. some with (h.r.), fine. 2008 Scott \$659 Est. \$140/180	\$100	1088 ★□	Uncut Press Sheets 25 housed in a G&K uncut sheet binder, incl. Stamp Expo 2000 Space Achievement, Scott #3409, a premium sheet (10 sheets), Legends of the West 2869 (2, 1 is signed), Trans-Mississippi 3209-10, Bugs Bunny 3137, Tweety Bird 3204 (2), Daffy Duck 3306 (2), Roadrunner 3391 (2), Mars Pathfinder 3178, Space Discovery 3238-42, Calder 3198-3202, Famous Trains 3333-37, Marilyn Monroe 2967 (1-signed), face is \$837, very fine. Scott \$3,090 Est. \$400/500	\$400

<i>Lot</i>	<i>Description</i>	<i>Start Bid</i>	<i>Lot</i>	<i>Description</i>	<i>Start Bid</i>
1089 ★★	Collector's Accumulation N.h., in 2 banker boxes, loose, pl. blocks in albums, few sheets, mostly lower value pl. blocks, unpicked, fine to very fine Est. \$500/750	\$300	1098 ○✉	Telegraph Accumulation In 6 binders, approx. 750 pieces incl. 100+ envelopes (few ASCC listed), generally 1850s to 1930s, incl. Telegraphs, a signed letter detailing new telegraph invention by Davis (1874), 14x18 inch poster with pricing (1855) etc., interesting lot, inspection recommended, fine Est. \$1,200/1,500	\$600
1090 ★★□	Small Mint Accumulation N.h., in partially filled banker box, incl. early pl. blocks, pad of 100 Hawaii Missionary sheetlet, etc., mostly clean, fine to very fine Est. \$150/250	\$80	1099 →★★✉	Extensive Aerogramme Collection <i>Web</i> #UC16//UC63, hundreds mint and used annotated in order on pages in 2 albums, identified by UPSS, Kessler and/or Scott #'s starting at #UC16, also incl. few V-Mail and "E-Com", incl. various overlappings or missing colors, incl. FDs with various cachets, various overseas usages incl. Tanzania, 1st flights, occasional miscut incl. #UC16a mint, UC16, UC16c-d die cutting reversed, UC32b-c, fine to very fine lot Est. \$750/1,000	\$500
1091 ★★	Famous Americans and Overrun Countries N.h., small box filled with hundreds all never hinged, great for retail or internet sales, fine to very fine Est. \$100/150	\$20			

Back-of-the-Book Collections

1092 →★★✉	Extensive Airmail Stationery Collection #UC1//UC37, hundreds mint and mostly later used to 1967 annotated in order on pages in 6 albums, identified by UPSS, and Scott #'s starting at #UC1/AM-1 and identified by various borders, watermarks, etc. (aerogrammes separate lot), incl. albinos, printing flaws, usages incl. overseas, 1st flights, FD's, Naval, APO, Special Delivery, better incl. #AM4-33 used (Scott cat. \$750 - cert.), AM5-30, 24-a, UC20b (cert.), former AM67a and 67a with inverted overprint"RF" overprints incl. #RM-2 signed, also "AMO" group of 5 used, excellent lot for expansion, mostly clean, fine to very fine ... Est. \$2,500/3,500	<i>Web</i> \$1,800	1100 ★○	Postage Due Collection on Pages About 100, 1879 to 1973 mostly used with few o.g. and modern n.h., better incl. used #J21, J27-28, J30, o.g. J6, plus some multiples, few with faults or misidentified, generally fine. 2004 Scott \$4,650 Est. \$600/800	\$500
1093 ★○	Collection in Album Hinged in a Scott album 1885 to 2008, complete set of mint Airmails incl. #C13-C15 thru 2008, all Special Delivery mint and used with mint E3, Parcel Post 1c-10c mint, complete set of Ducks mint or used thru 2004 all mint from RW6 on incl. some Jr. Ducks and a Tatum book of facsimile Confederates, generally fine to very fine ... Est. \$1,500/2,000	<i>Web</i> \$1,200	1101 ★✉	Dealers Stock of Postal Cards <i>Web</i> About 600 from #UX1 to UX42, majority mint with some early used, better incl. UX1 (3 mint with small faults), UX3 (2 mint), UX5 (2 mint), UX7 (23 teeth, 3 used), UX8 (one mint), UX12 (20 mint), UX29 (4 mint), also group of mint Airmail cards, all identified and sorted by Scott and UPSS#, mostly fine or better Est. \$400/600	\$325
1094 ★○	Back of the Book Collection Several hundred mint and used in Scott album, Special Delivery, Dues, Officials, Newspaper incl. #PR1 and PR2, Parcel Post set used, Telegraphs, value in Revenues incl. reds, greens and Wine issues, noted RY2 (2 on piece), some faults, generally fine Est. \$1,500/1,800	\$1,000	1102 ★○	Food, Drink and Tobacco Seals Labels and Poster Stamps Thousands on sales cards with some duplication, back up stock ready to price and put in inventory, huge retail value, must inspect, fine to very fine appearance, <i>Ex. Connecticut Cinderellas</i> Est. \$475/550	\$300
1095 ★	Newspaper Lot #PR1//PR8, 15 on sales cards, included PR1, PR2, PR2b (2), PR3, PR3b, PR4 (4), PR4a, PR5 (2), PR6 (scratched plate), and PR8, mixed condition. Scott \$7,000 Est. \$1,400/1,500	<i>Web</i> \$1,000	1103 ★✉	Postal Stationery Collection Thousands in 12 banker boxes filled with collectors collection incl. postal cards, mint and used and his duplicates, massive amount of material here, runs to 2010, huge face value and many better items to be found, must inspect, generally fine to very fine Est. \$400/600	\$300
1096 →★★★	Oldtime Airmail Collection O.g. to n.h. on homemade pages with dupl., incl. #C1-C6 o.g., C1-C3 n.h. blocks of 4 (C3, 2 o.g., 2 n.h.), C4-C6 blocks of 4 n.h., C10a n.h., C13-C15 o.g., C18 o.g. and block of 4 n.h., other issues to 1947, plus misc. Foreign at the back, generally fine to very fine Est. \$1,300/1,500	<i>Web</i> \$900	1104 ★	Newspaper Mint Collection On hingeless pages, 30 plus 4 Confederate items, incl. #PR2, 4-6, 9-15, 57, 59-62, 114-125, Confederate #7, 9, 12-13 mint, mixed condition Est. \$400/600	\$250
1097 ★○	Back of the Book Collection Few hundred mint and used, incl. extensive Officials with dupl., few Carriers, some Revenues, perf. freaks and a bit of Possessions, worth a look, generally fine ... Est. \$1,100/1,500	\$750	1105 →★★	Airpost Mint Values N.h. to o.g. with #C1-6 n.h. to o.g. plus dups., C10a, Map multiples, clean, fine to very fine Est. \$350/450	\$250
			1106 →★★★	Airpost Mint Stock Many hundreds early issues o.g., balance n.h. incl. plate blocks and few back of book issues, better items incl. o.g. #C1-3, C5-6, C18, mostly fine to very fine. ... Est. \$300/350	\$250
			1107 ★	Souvenir Card Collector Accumulation Hundreds in 13 binders running from 1960 to 2000 incl. Numismatic Cards, minor duplication, did see at least 3 #SC2, great for retail or internet sales, huge catalog value, must inspect, generally fine to very fine Est. \$300/400	\$200

<i>Lot</i>	<i>Description</i>	<i>Start Bid</i>	<i>Lot</i>	<i>Description</i>	<i>Start Bid</i>
1108 ○	Large Collection of Souvenir Pages Thousands in 24 binders filling 6 banker boxes, from 1970s to 2003, collector appears to have two sets, only appears to be missing a few for that time period, must inspect, generally fine to very fine Est. \$300/400	\$200	1119 ★★	Duck Lot O.g., hinged or never hinged, small group with #RW1 used, mint RW6, RW25 (2), RW26, and \$780 face in different plate blocks, must inspect, generally fine to very fine Est. \$500/600	\$350
1109 ★	Mint Stationery Accumulation Bankers box with hundreds from 1800s to 1970s, also collection in Scott album with mint postal cards, many better items to be found, did notice some Possessions mixed in, worth a look, generally fine to very fine Est. \$300/400	\$200	1120 ★○	Dealers Stock Box with hundreds, most are identified and priced at retail, noticed Tax Paid, State Tax stamps, group of Hawaii revenues, Some New York Stock Exchange essays, State Ducks on license, Playing Card stamps, and much more, retail of items worked up is over \$4200, must inspect, mixed condition, <i>Ex. Connecticut Cinderellas</i> Est. \$450/550	\$300
1110 ★	Christmas Seal Collection Oldtime collection in "Long" album to 1957 mint with many additional postcards and few covers loose, starting #WX1, WX4, WX7 with blocks of 4, WX4a, b, WX9 strip of 4, later progressive proofs, 2nd collection in White Ace album, fine to very fine Est. \$300/500	\$200	1121 ★	Beer Stamp Stock of Post Prohibition <i>Web</i> Over 130 between #REA 152 and REA197a, incl. REA163 (3) and REA182 (2), mixed condition but many nice ones, several with additional state revenue attached, incl. over 100 state tax and distilled spirits, must inspect, otherwise fine Est. \$400/500	\$300
1111 ★	Mint and Used Better Special Delivery, Postage Dues About 100 o.g. some n.h. and used incl. mint #E3-7 (E6 regummed), E11-13, E14 plate block, F1, better Dues with used J18, plus later issues incl. some n.h. plate blocks, better centering than normal, mostly fine or better Est. \$250/350	\$200	1122 ○	Used Duck Collection <i>Web</i> 1934 to 1987 complete except 1976, and incl. extras for 1950, 1953, 1955-60, 1962-63, much cleaner group than normally seen, mostly fine to very fine Est. \$400/500	\$300
1112 ★	Mint Stationery Accumulation Few hundred entires, 1920s to modern in small box, noted nice group of "freak" prints incl. albinos, shifted impressions, overinking, etc., good variety of issues and papers, specimens, few used, needs a close look, generally fine to very fine Est. \$200/300	\$150	1123 ★○	Tobacco Strip Collection 380+ identified on pages, some dupl., unusual offering, inspect, generally fine Est. \$350/450	\$250
1113 ★	Newspaper Forgery Lot 45 items all identified on sales cards, identified by Doc Peppers 2010 handbook, must inspect, mixed condition Est. \$100/150	\$70	1124 ★	1875 to 1902 Beer Stamps <i>Web</i> 50 with many different varieties, oldtime condition, most stamps with faults but contains many usable items, otherwise fine. Scott \$2,006 (Owner's) Est. \$300/400	\$200
			1125 ★	1909 to 1918 Beer Stamps <i>Web</i> 20 representing all issues, mixed condition but contains several nice issues, incl. REA94, 99, 197, 139, and 143 (5), otherwise fine Est. \$300/350	\$200


Revenue Collections

1114 ○	Collection Few thousand mounted in pages, heavy dupl. on issues, noted First issue to \$20, Second issue to \$2, Third issue to \$1, Battleships, etc., excellent for cancels, faulty to fine, inspect Est. \$2,500/3,000	\$1,800	1126	Cigarette Pack Collection 210+ opened packs mounted in album, various brands showing Tax Paid labels on the packs, inspect, fine Est. \$250/350	\$150
1115 ★★	Duck Never Hinged Collection <i>Web</i> N.h., #RW2-6, RW8-20, RW22-23, RW25-32, RW34-38, with a few plate number singles, RW2 just fine, otherwise fine to very fine. 2014 Scott \$4,900 Est. \$1,500/2,000	\$1,100	1127 ★★	Mint Duck Early Group <i>Web</i> N.h., #RW14/RW39, 12 diff., n.h. except o.g. RW14, fine to very fine. Scott \$970 Est. \$250/300	\$150
1116 ★★	Mint Duck Collection In White Ace album, mostly mint, #RW1-9 unused, balance mostly o.g. with scattering of n.h. incl. RW10, RW14, RW17, RW30 and few later issues, mostly fine or better, mostly fine to very fine Est. \$600/800	\$500	1128 ★★	Federal Duck Collection N.h. to no gum on White Ace pages, noted #RW2 plate single unused, RW5 o.g., value in modern \$5 to \$15 issues (face \$325+), generally fine to very fine Est. \$150/200	\$100
1117 ★	Match & Medicine Collection 260+ diff. in specialty album, noted #RO27b, RO134d, RS4b, RS73d, usual mixed condition Est. \$650/750	\$450			
1118 ○	1870 to 1871 Beer Stamps <i>Web</i> Lot of 29 stamps, 8 different varieties incl. REA27, 27B, 29b, oldtime quality, most stamps with faults, otherwise fine Est. \$500/600	\$400			
			1129 ★★	Marshall Islands, Palau, and Micronesia Hoard N.h., banker box filled to the brim with mint never hinged from 1984-2008, booklets, sheets, sets, singles, and specialty items, customer spent thousands on this when issued by new issue dealer, incl. double impression items that he spent over \$300 each, face value is enormous, into the thousands, must inspect, very fine Est. \$1,000/1,500	\$700

Possessions Collections

See Lots 1568-1571 for D.W.I. Collections

<i>Lot</i>	<i>Description</i>	<i>Start Bid</i>	<i>Lot</i>	<i>Description</i>	<i>Start Bid</i>
1130 ★	Collection on Handmade Pages About 100, majority mint incl. Canal Zone with mint #120-135, C15-C20, Puerto Rico and Hawaii with mint 30-34 (no gum), 37-41, 1893 Provisionals, some with gum faults, fine Est. \$550/750	<i>Web</i> \$450	1140 ★☒	Canal Zone Stationery and Cover Group Incl. picture postcards, censored, flight, #U4 used, mixed franking, UX1 mint, etc., also few U.S. stationery items, fine Est. \$100/200	\$50
1131 ★	Marshall Islands, Palau, Micronesia Hinged in 4 Scott albums from 1983-2009 incl. back of book, and souvenir sheets thru 2009, all three are complete with booklets, fine to very fine Est. \$450/550	\$350	<i>Guam</i>		
1132 ★○	Nice Balance Lot Mint and used from Cuba with mint #222A (CUPA), 222 pl. block, 223 pl. block, 225 (CUPA) x3, 225 plate strip of 3, 226 plate strip of 3, E1, Puerto Rico mint #210-214 blocks of 4, 211 (Portu), 214 (Forto) x2, J1-2 blocks and pairs with 36 degree and 25 degree, and some Philippines booklets and singles, must inspect, generally fine to very fine Est. \$500/600	<i>Web</i> \$300	1141 ★	Nice Grouping Mostly mint with a few used, some highlights incl. #1, 2, 5, 10, and 11 in blocks of 4, singles of #12 (2), M1 (2), M2 (2), M3, M4, M7a ("Graud"), mint block of M2, and used 8 and 11, must inspect, generally fine to very fine Est. \$1,100/1,200	<i>Web</i> \$700
1133 ★○	Collection on Pages Mint and used mounted on Scott pages, Hawaii with most mint incl. #30, 31, 33, 40, 53-61, 64, 74-82 mint, Canal Zone mostly mint and Puerto Rico Spanish Dominion and U.S. overprints, worth a look, mixed condition Est. \$300/400	\$200	1142 ★	Guard Mail Extensive Collection Complete with mostly mint on pages, incl. minor dupl., incl. #M3-4 with watermarks, M4 mint pair and block, "Graud" and "MIAL" vars., pl. blocks, M10-11 multiple pl. blocks of 10, etc., fresh throughout, fine to very fine Est. \$1,000/1,300	<i>Web</i> \$700
1134 ★☒	Small Better Stationery Group Envelopes and postal cards, 36 mint, 4 used, used incl. Canal Zone #UX9 from Capiz to U.S., UX22, d, mint incl. UX2c, U15, mint cards D.W.I. incl. U1a, Cuba, etc., clean group, fine Est. \$300/400	\$200	1143 ☒	Extensive Guard Mail Cover Collection 50+ on pages, all issues covered, incl. #M1-2 FDCs (cert.), M8 last day of use, "Miller", "Lockie" correspondences, numerous M3-4 usages incl. 1c pair (2), some commercial, M6 used to Germany with shipboard cancel, "Naval Government of Guam", couple with straightline Inarajan, etc., inspect, fine to very fine overall Est. \$1,000/1,400	<i>Web</i> \$650
1135 ☒	Postal History About 75 covers in a box with some better noted, noticed Philippines with victory overprints and some flights, E1 on cover, couple of Panama Railroad stock receipts, Puerto Rico, Cuba and a few Hawaii, nice lot worth a look, mixed condition Est. \$250/300	\$180	1144 ☒	Extensive Intact U.S. Adhesives Usages Collection Approx. 170, starting with 6 circa 1900-1906 (5 with small Bureau issues), later incl. WWII related to 1970, fine Est. \$600/800	<i>Web</i> \$450
1136 ★☒	Postal Stationery Lot About 150 or more with Philippines, Cuba, and Puerto Rico, Cuba has a big run of Specimen overprints and Philippines has some better postal cards, worth a look, fine to very fine Est. \$150/200	\$50	1145 ★○	Mint and Used Regular Issue Balance On pages, incl. mint #1-2 with 11a, E1, used 1-11, E1, E1 "dots above messenger" (2), small cancel group, 2c pl. block of 6, 5 mint block of 4, etc., fine to very fine overall Est. \$600/800	<i>Web</i> \$450
1137 ★	Canal Zone Balance of Mint Collection On printed pages, starting #2 (certs.) mint and used, Dues complete incl. #J3 (s.e.) with few blocks, pl. blocks, few dups., vars. incl. 91c, 10a, 39c, d, CZSG vars., 60-65 blocks of 4, excellent collection for expansion, fine to very fine overall Est. \$1,500/2,000	<i>Web</i> \$1,000	1146 ☒	U.S. Adhesives Cover Collection 1930s to 1970s, couple hundred annotated and mounted in album, incl. ship, special events, flights, 1976 Bicentennial incl. adhesives, interesting 1944 APO with contents 7/23/1944 (part of 1st mail out of Guam) and incl. 3 pieces of Japanese currency, etc., fine to very fine lot Est. \$200/300	\$140
1138 ★★☐	Canal Zone Plate Block Lot, #38-40, 54, 61 Mostly n.h. as far as we can tell, Plate strips of 20 hinged on pages, otherwise fine to very fine. Scott \$3,815+ Est. \$500/600	<i>Web</i> \$300	<i>Hawaii</i>		
1139 ★○	Canal Zone Collector's Secondary Collection On printed pages, dupl. on pages, #1-3 forgeries, back of the book, etc., generally fine to very fine Est. \$200/300	\$130	1147 ★○	Extensive Collector's Accumulation Many hundreds mint and used accumulated over many years, mostly no gum or used, up to around 100 for some values (1894, 1899 issues few values over 100) disorganized on stockcards, etc., incl. #9 (6 and mint block of 4), 11SA complete sheet, 27, 28 (4), 29 blocks of 4, 50 with pairs, later mint and used blocks of 4 through the Provisionals, #31 three mint blocks of 4, 34 two blocks of 4, block of 6, 45 block of 8, 49 used with killer cancels, many overprint mint blocks, used unchecked for cancels, also Officials up to around 15 of each, also few mint cut squares and Revenues, fine Est. \$4,000/6,000	<i>Web</i> \$2,800

Lot	Description	Start Bid	Lot	Description	Start Bid
					
1148 P	Selection of 27 Proofs #35P//79P, both trial colors, plate proofs on India and/or card, all with margins all round, couple with minute problems, excellent colors, overall very fine. Scott \$9,340 Est. \$3,000/4,000	\$2,400	1156 ★○	Ryukyu Collection Mint and dupl. used on stockpages, incl. #1a-7a n.h., 16-16B, Airs complete, 3 diff. overprint settings for 1959 Air issue, also Revenues, Provisionals, fine to very fine. 2010 Scott \$2,000 Est. \$450/550	\$350
1149 ☒	Group of 65 Covers Mostly pre statehood, many "Hatfield" correspondence with overfrankings from Honolulu 1897 to London, with only a few with receiving marks, some stationery usages, also 1853 morning cover to "Sandwich Island" from U.K., few postcards, modern, interesting group, generally fine Est. \$2,000/3,000	Web \$1,000	1157 ★★	United Nations Collection to 2013 N.h., in 19 White Ace albums to 2004 complete with New York, Vienna, and Geneva, plus a sheet album and banker box full with all issues to 2013, noticed Kosovo collection complete, and appears that there are many better modern items, must inspect, fine to very fine Est. \$1,000/1,500	\$700
1150 ★○	Select Mint and Used Early Group 22 mint or used items through the Numerals with certs and 5 (4 Numerals) with bad certs., incl. o.g. #11, unused 23 (4), used 16 (3), mint 11, used and mint 22, mint 25 (2), etc., all with minor to major faults, high cat., fine to very fine appearing Est. \$1,000/1,500	\$650	1158 ★	United Nations Collection Hinged in 7 Scott albums from 1951 to 2006 incl. back of book, and souvenir sheets, has a copy of specimen overprint with letter of #51, souvenir cards, stationery and imprint blocks (not complete), incl. Geneva and Vienna, they are complete to 2008, fine to very fine Est. \$400/500	\$300
1151 ○	Large Cancel Collector Accumulation Hundreds on cards somewhat identified by Meyer #s by alpha town names, mostly 1800s and later, some on pieces, some purchased on individual basis, very interesting, needs some work but a great lot for expansion, fine Est. \$750/1,000	\$500	1159 ★★	United Nations Collection Mostly n.h., featuring singles, plate blocks, souvenir sheets, etc., incl. first issues singles and plates, #38 sheet, Flag sheets, incl. Geneva and Vienna, fine to very fine Est. \$300/400	\$200
1152 ○	1880s to 1890s Late Letter Mail Cancels on 3 Copies #39, 42, 52C, purple circular handstamp (MH-379), couple trivial flaws, fine to very fine Est. \$250/300	Web \$150	1160 ★★★	United Nations Collection Mint collection on Minkus pages in two albums ranging from 1951 to 2008, incl. first issues, Flag sheets, International Court of Justice, Vienna and Geneva issues as well, fine to very fine Est. \$300/400	\$200
1153 ★☒	Group of 49 Mint Stationery Mostly envs., couple postal reply, few with minor issues, mostly fine to very fine Est. \$200/300	\$100	<h2>U.S. Postal History Collections</h2>		
1154 ★☒	Ryukyus Postal Card Collection Organized in 3 cover binders, value in election issues, some dupl., noted unused and used 1942 forerunner cards for Minister of Agriculture election, #UZE1 (2), UZE5 in red brown, UZE9 (2), UZE10 used (4), UZE11, UZE11A, UZE12 (2), UZE13 and variations, UZE14 (cat. \$450), UZE18, UZE19 used (6), UZE22, UZE29 (cat. \$350), UZE30, UZE31 (2), also postal cards and envelopes incl. UX4, UY1 (cat. \$2000), UY6, UY7, lovely and seldom seen group, fine to very fine Est. \$1,500/2,000	Web \$1,000	1161 ☒	Retail Stock Box of 1100 covers with a marked retail of \$12,000, strongest in modern uses and unusual back of the book, incl. a smattering of Foreign, useful lot, fine Est. \$900/1,200	\$750
1155 ★★	Ryukyus Mint Collection Nice n.h. collection only missing 17 for completion, incl. some Provisionals #3X1-3X4, 3X6-3X13, 3X25, 3X27, 3XR3, 3XR5, 3XR7 and others, some of Provisionals have paper adhesion, and postal cards with a few better, worth a look, otherwise fine to very fine Est. \$800/1,000	Web \$500	1162 ☒	19th Century Accumulation 4 boxes with about 10,000 19th century covers, strongest in stationery, a wide variety of markings and usages, infrequently seen in this quantity any more, generally fine Est. \$1,000/1,500	\$500
			1163 ☒	Large Bank Note Group Nearly 2000 in banker box, 1¢ to 10¢ values, good range of usages and markings, good lot for cancels or study, worth a look, generally fine Est. \$500/750	\$350
			1164 ☒	Trans-Atlantic Stampless Group 36 covers to and from the U.S., mostly 1850s usages, good variety of markings, inspect, fine Est. \$500/700	\$350
			1165 ☒	Dealers Stock Over 3000, from Colorado, priced up to around \$10, only seen at local shows in Colorado and Northern California, good section of Navals, also events, FDs, cancels of mostly Eastern states but with Colorado, Alaska, some commercial, stationery, few #10 size, mostly early to mid 20th Century period, fine to very fine overall Est. \$500/750	\$350

<i>Lot</i>	<i>Description</i>	<i>Start Bid</i>	<i>Lot</i>	<i>Description</i>	<i>Start Bid</i>
1166 ☒	1922 to 1976 Annotated Collection On pages in nine 3-ring binders, many hundreds incl. FD's with various cachets (3 baseball), commercial, mostly complete for period with scattered better, virtually complete from 1930 on, inspect, generally fine to very fine, <i>see adhesive companion lot 1034</i> Est. \$500/750	\$350	1175 ☒	Advertising Lot 31 covers with letterheads, most 1884 to 1914, wide range of topics incl. Pope Mfg. Co. (1906 of auto, bicycle, motorized bicycles), Parry Mfg. Co. (1895 of light vehicles), others incl. boots and shoes, woolen mfg., farm products, many with building illustrations, all are open sleeved for easy viewing, a very attractive lot with potential for the cover/ephemera collector or dealer, generally fine to very fine ... Est. \$300/400	\$200
1167 ☒	Special Delivery Lot #E2//E10, group of 28 either with adhesives or stationery usages, some with auxiliary markings, mostly East Coast usages but incl. other States, fine overall. Scott \$4,000+ Est. \$400/500	\$350	1176 ☒	Accumulation in Boxes 4 banker boxes filled with thousands, incl. local posts, first flights, HPO, first trip and commercial, should be a great lot for a \$1 table or for internet sales, must inspect, mixed condition Est. \$300/400	\$200
1168 ☒	Postal Card 1914 1c Collection On #UX27, around 1200 postal cards in collection in 5 binders, collected and arranged according to rates, cancels and topics, slogans, Expo, FD, last day, meters fancy cancels, destinations, Patriotics, flights, Postage Dues, etc., one whole book of Foreign destinations, retail value stated at over \$3200, a very interesting accumulation, fine to very fine Est. \$500/700	\$325	1177 ☒	Military Group Box of about 2000 mostly WWII era military covers, APOs, FPOs, ships and more, inspect, fine Est. \$300/400	\$200
1169 ☒	Western States Group Covers and cards from CO (17), CA (19), NM (26) and AZ (39), late 19th to early 20th Century, good variety of towns, fine Est. \$450/550	\$300	1178 ☒	Correspondence to Paymaster in Norfolk Mid 1860s Group of three covers with letters and 2 letters without covers, all to Major B.B. Hammond, paymaster in Norfolk VA, one postmarked April 14 1965 (day Lincoln was shot) with letter enclosed from his wife telling him she was ecstatic about Lee's surrender and that she read he was first Paymaster in Richmond to distribute the greenback to our victorious soldiers, one dated Oct 14 1864 from New Bedford and other from New Bedford dated Oct 23 1864 and both with content, must inspect, mixed condition Est. \$300/400	\$200
1170 ☒	About 170, #803/857 Incl. commercial up to \$1, many FD's, oversized, auxiliary markings, reg., Postage Dues, APO, etc., virtually all U.S. destinations, inspect, fine to very fine Est. \$400/600	\$300	1179 ☒	Auxiliary Markings Collection <i>Web</i> Approx. 100+, annotated on pages, late 19th to mostly mid 20th Century, incl. reg., certified, Special Delivery, starts with Bank Note issues and incl. Columbians, Trans-Miss., stationery usages, advert., Due adhesives, few recent but mostly to 1950s, etc., generally fine to very fine Est. \$300/400	\$200
1171 ☒	Wells Fargo Express Group 27 used entires, mostly CA usages, noted Colfax, Petaluma, Los Angeles, San Francisco, Sonora, Virginia City, inspect, fine Est. \$400/500	\$280	1180 ☒	Collector's Accumulation Mostly 1920s to 1940s period, unpicked, incl. postcards, Washington-Franklin issues, Special Delivery adhesives, Official Mail, few 19th Century Bank Note usages, etc., inspect, mixed condition Est. \$300/400	\$200
1172 ☒	Eclectic Balance 50+ covers, 1799 stampless to 1940s, noted advertising, independent mails, 1906 cover to Java, territorial, Forts, #C13 on flight cover, E3 on 1894 cover, couple pieces of currency, worth inspection, generally fine Est. \$400/500	\$250	1181 ☒	USS Arizona 1929 to 1940 Group 35 commercial and cacheted covers, noted 5 diff. cachet types from 1929 to 1940, 12 covers have cachets, generally fine to very fine Est. \$280/350	\$200
1173 ☒	Group of 4 Better <i>Web</i> Consists of circa 1850 Steamer Louis D'Or Cheney Johnson Master double oval packet black hs. on 3c Nesbitt cover to New Orleans, flap torn on back, N.O. & Vicksburg River Route ultramarine waterway route agent with postmark tying 3c, to Natchez, 6c Interior Dept. tied to New Orleans imprinted cover by 1882 New Orleans duplex cancel, has repairs at right and stamp lifted and hinged in pos., 1861 CSA stampless usage from Canton, Miss. to Louisiana, Nov 27 cds in black, PAID 5 at right (CSA Type C), to New Orleans, excellent strike, plus apparent "Fox" forgery steamer cover, nice group, fine Est. \$300/400	\$200	1182 ☒	Texas Group 60 covers or cards, late 19th to early 20th Century, good variety of towns, noted advertising, special delivery usages, auxiliary markings, few with enclosures, inspect, mixed condition Est. \$300/400	\$150
1174 ☒	Nevada Territory Group <i>Web</i> 12 used covers, 2 with #68 both with Virginia City date stamp one May 24th 1862 and the other June 8th 1877 Wells Fargo Co. covers with different postmarks, two with Genoa, 1 Reno and 1 Eureka, others are Virginia City, and a couple of mint stationery items, must inspect, mixed condition Est. \$300/400	\$200	1183 ☒	19th Century Entires Box of a many hundreds mostly 19th Century used envelopes, all identified by Thorp-Bartel numbers, a great lot for a stationery specialist, fine Est. \$250/350	\$150
			1184 ☒	Kansas Accumulation Box of about 500 covers with DPOs, Doanes and small town markings, mainly 1880-1950, interesting group, generally fine Est. \$250/350	\$150

<i>Lot</i>	<i>Description</i>	<i>Start Bid</i>	<i>Lot</i>	<i>Description</i>	<i>Start Bid</i>
1185 ☒	1859 to 1861 Incoming Stampless Trans-Atlantic To Boston via Prussian closed mail by British and American packet ships, from Marienbad, Bohemia and Salzburg, Austria, sent unpaid by Cunard Line RMS Africa via Leipzig-Magdeburg TPO and Aachen, and Inman Line City of Washington via Leipzig-Coeln TPO and Aachen, various rate markings, exhibit pages incl., one with letter, scarce pair, fine	<i>Web</i> \$140 Est. \$200/250	1194 ☒	Accumulation of Christmas Seals 60 mostly postcards, 1907 to 1920s, incl. #WS4 (6, 2 tied with cancels), WS7 (3, all tied) plus a few related seals, fine to very fine	\$100 Est. \$120/150
1186 ➔☒	Airpost Special Delivery 1934, 1936 Collection, #771, CE1-2 Mounted and notated on pages, approx. 75 plus mint incl. sheets, incl. FD's, commercial incl. Canada Dues, advertising, #771 usages, advert., usages with Prexies, Zepp., overseas, numerous with auxiliary markings, plus few modern with "Special Delivery" markings, inspect, fine	\$140 Est. \$200/300	1195 ☒	WWII Hawaii Group Very historical lot of 36 interesting covers, mostly censored, all from people with Japanese surnames living in Hawaii to various Army servicemen, also with Japanese last names at Induction Training Center, APO 957 San Francisco (Schofield Barracks, Hawaii) and 93rd I.T.B., a Nisei outfit at Camp Maxey, TX, fine to very fine	\$80 Est. \$150/200
1187 ☒	1842 to 1993 Missouri Group About 365 in three binders all related to or postmarked in Missouri, there are some stampless and many advertising covers, couple of patriotic, FDs, and postcards, a lot are written up and have letters, many interesting cancels, worth a look, must inspect, mixed condition, <i>Ex Elizabeth Nettles</i>	\$100 Est. \$250/350	1196 ☒	Better Stampless Group 34 covers, nice mix of cities and towns, noted maritime mail, trans-atlantics, turned covers, etc., inspect, generally fine	\$80 Est. \$150/250
1188 ☒	Prominent Americans Accumulation Over 500 covers, vast majority #10 size, various frankings, rates, auxiliary markings, perfins, plus some booklets and plate blocks, great group for study, generally fine to very fine	\$100 Est. \$200/300	1197 ☒	Modern Group Several thousand commercial, in 3 banker boxes, also some first flight and a few FDs all mid to later 20th Century, \$1 box material, fine overall	\$70 Est. \$100/150
1189 ☒	Meters, War Dept. and Military Related Interesting early to mid-20th Century accumulation of hundreds with selection of meters, War Department, commercial, Washington-Franklins, slogan cancels, some Foreign, etc., worth review, generally fine	\$100 Est. \$200/300	1198 ☒	Late 1850s 2 Express Usages 1st Paid Greenhood & Newbauer Northern Express in blue on #U9 to S.F., portion of back flap missing; 2nd Wells Fargo on U165 with purple Messenger Express oval cancel to S.F., clean pair, very fine	<i>Web</i> \$70 Est. \$100/140
1190 ☒	Accumulation in Box About 100 covers and 18 postcards, highlight incl. 3 better Columbian covers, C18 flight, and many other interesting items, generally fine	\$100 Est. \$150/200	1199 ☒	1850-1943 Jefferson Barracks 24 covers, postcards and a few other items related to Jefferson Barracks, with several different postmark types represented incl. 3¢ 1857 tied by Jefferson Barracks postmark (with embossed patriotic design and red & blue piping on reverse), U.S. Christian Commission cover with faint octagonal Jefferson Barracks postmark, two 1880s covers to territorial Arizona and New Mexico, 1890s double-ring and starburst styles, various patriotic and picture postcards (incl. at least one real-photo) and more, mixed condition, <i>Ex Elizabeth Nettles</i>	\$50 Est. \$150/200
1191 ☒	Collectors Accumulation in Box About 150 in a small box, noticed some advertising, U.S.S. Zeppelin postcard, several interesting Postage Dues, and a few ephemera items, must inspect, mixed condition	\$100 Est. \$150/200	<hr/> <i>First Day and Cachet Makers</i> <hr/>		
1192 ☒	Prexie Accumulation About 100 in a box, saw couple bank tags, Special Delivery combos, single rate use, 1½¢ remailed mailer from Canada, and a few advertising items, must inspect, mixed condition	\$100 Est. \$150/200	1200 ☒	Massive F.D. Hoard 13 boxes with approx. 20,000 running from mostly 1960s to 1990s, about 80% are unaddressed and most are cacheted, also incl. some U.N., must inspect, generally fine to very fine	\$1,500 Est. \$2,000/2,500
1193 ☒	USS Submarine "V" Boat Collection Features a handdrawn cover page showing various submarines, 9 covers highlighted by the rare "error" cancel in 1931 which spelled USS Narwhal as USS Harwhal, there are 8 other scarce cancels along with related items in the collection, fine to very fine	<i>Web</i> \$100 Est. \$140/200	1201 ☒	Collector's F.D. Hoard Over 25,000 FDs in over 75 boxes (plus binders of oversize) filling 20 banker boxes from a collector, runs from mid 1930s to 2010 incl. back of the book, Artcraft, Artmaster, Fleetwood and many other cachets mixed throughout, mixed addressed and unaddressed, some duplication incl. some U.N., must inspect, generally fine to very fine	\$1,000 Est. \$1,500/2,000
			1202 ☒	Navy Recovery Ship Collection 85 covers, features cancels from USS Intrepid (2), 5-2-62 (1 Captain's cover), USS NOA 2-20-62 and USS Randolph (3), 2-20-62, plus first 3 Beck space cachets (#77-79) 1962, 44 have Beck cachets and 11 are autographed, incl. recovery ship covers from Mercury, Gemini, Apollo and Skylab missions, also incl. U.S. Space Cover Collecting Handbook (200 pages) autographed by Ray Cartier and 1976 Space ID wheel, worth inspection, very fine	<i>Web</i> \$750 Est. \$1,100/1,500

<i>Lot</i>	<i>Description</i>	<i>Start Bid</i>	<i>Lot</i>	<i>Description</i>	<i>Start Bid</i>
1203 ☒	Bevil Handpainted Collection About 450 from this popular artist running from 1997 to 2011, appear to be all different, noticed around 10 from different cachet makers, must inspect, fine to very fine Est. \$900/1,000	\$600			
1204 ☒	Huge Accumulation Accumulation in 7 banker boxes, thousands of mostly modern FDs from 1940 to 1990, cacheted, some unaddressed, plus events, space and occasional Foreign, good variety, great for \$1 boxes, very fine Est. \$800/1,000	\$600			
1205 ☒	6 Banker Box Lot Huge accumulation of more than 8,000 FDCs, starts with the 2c reds and follow through the Famous Americans, Overrun Countries and forward to the early self-adhesives, these are a mix of cacheted unaddressed and addressed, in addition there are a few stampless, classic covers and general commercial covers from the 1880s onward to modern, groupings of inaugural, HPO and RPO covers, postal and postcards and an almost complete set of the Smithsonian "Milestones of Flight" incl. the very scarce No. 1, generally fine to very fine Est. \$400/600	\$250			
1206 ☒	Naval Accumulation 2 banker boxes filled with many hundreds, needs to be gone thru for finds, noticed some Crosbys, great for dollar table or internet sales, must inspect, mixed condition .. Est. \$200/300	\$150			
1207 ☒	F.D. Hoard 4 banker boxes filled with thousands, many different cachet makers, addressed and unaddressed, cacheted and uncacheted, noticed some U.N. in the lot, must inspect, mixed condition Est. \$200/300	\$150			
1208 ☒	Wilkins-Ellsworth Trans-Arctic Submarine Expedition 2 unique handdrawn covers featuring New York-Longyearbyen and New York-Bergen, plus 3 real photo postcards showing USS 0-12 (the Navy submarine converted to Nautilus in 1930), plus article from the APS magazine in 2005, fine to very fine Est. \$180/250	<i>Web</i> \$120			
1209 ☒	Better F.D. Group Select group incl. #704-715, Famous Americans, 2 baseball, Prexies to \$5, 803-830 electric eye set, fine to very fine Est. \$200/300	\$100			
1210 ☒	Gold Foil Collection 1780 mostly FDs running from 1980s to 2003, mixed addressed and unaddressed, appear to be all different, must inspect, generally fine to very fine Est. \$150/200	\$100			
1211 ☒	Farleys F.D. Group Incl. #77a, 769a (cat. \$250 each), also 1934 Parks FD's, blocks of 4, cross gutters, 766-767, etc., some with wrinkles, fine to very fine lot Est. \$150/200	<i>Web</i> \$100			

Postcards

United States

1212 ☒	Exposition Group Hundreds in banker box, mix of used and mint, noted 1939 Golden Gate, Seattle World's Fair, Alaska-Yukon, 1915 Panama-Pacific, Chicago World's Fair, Panama-California in San Diego, Jamestown, few California festivals, good variety of scenes, good to very good Est. \$400/500	\$300
1213 ☒	Western States Accumulation Thousands mint and used in 4 banker boxes mostly chromes and linens, noticed CA, CO, OR, UT, NM, WY, WA, and MT, must inspect, very good Est. \$300/400	\$200
1214 ☒	San Francisco Collection Hundreds in three binders mint and used from 1900s to 1970s, incl. real photo, linens and chromes, scenic views, street scenes, and earthquake scenes, must inspect, very good to excellent Est. \$300/400	\$200

Worldwide

See Lot 1888

1215 ☒	Foreign Dealer Stock Approx. 30,000 cards with emphasis of U.S. but incl. Foreign with Canada, and Russia, lots of topics, some early 20th Century to mostly chromes and linens, also state/city in same box with topics, very good Est. \$1,500/2,000	\$1,000
1216 ☒	Germany WWI Collection 250 mostly used, military and patriotic related, few comic, good variety, nice group, excellent Est. \$500/700	\$350
1217 ☒	Military Collection Hundreds in 3 binders with military theme, marines, WWI, and Turkish, real photo to modern, largest amount from WWI, must inspect, very good to excellent Est. \$300/400	\$200
1218 ☒	European Lot 8 old vintage postcard albums with early 1900s from Germany, France, and Europe, take a look, fine Est. \$200/300	\$150

Ephemera

United States

1219	Union Civil War Correspondence Consists of 34 multi page letters, dated 1865 to 1865, from various Union soldier pen friends to Jennie Russell of London, TN, all were written from the field, the majority are from Lt. Elijah K. Brown of the 4th Tennessee Infantry Regiment (research file enclosed), virtually all have good military or war related content, inspect, fine Est. \$1,000/1,300	\$500
1220	Oldtime Estate Lot 5 banker boxes stuffed with material, noted cigarette cards, mining, checks, stock certificates, letterheads, valentines, and all kinds of misc. items, worth a look, fine . Est. \$500/600	\$300

<i>Lot</i>	<i>Description</i>	<i>Start Bid</i>	<i>Lot</i>	<i>Description</i>	<i>Start Bid</i>
1221	American Banknote Invitation to Opening of Central Station Invitation to the opening of South Central Station in Boston on Dec. 24 1898, the envelope was sent in dated Dec 24 1898 to S.W. Manning and a mourning announcement for Sam Winkley Manning who was associated with the Railroad in Boston, must inspect, generally fine Est. \$300/400	\$200	1229	Theodore Roosevelt Lot 10 items, the best being, Peace Jubilee 1898 booklet with photos incl. Teddy as Rough Rider, Stereoview card as Rough Rider, and a copy of Civil Service magazine he was the commissioner of, must inspect, mixed condition Est. \$150/200	\$100
1222	Stereoview Cards 3 banker boxes fill with photos of all kinds, most value in Keystone stereoviews incl. Yosemite, California and other U.S. views, very good Est. \$250/300	\$200	1230	Collectibles Reminders 3 banker boxes with collectibles, incl. trading cards, magazines, documents, and 2 full boxes with hundreds of record albums most are "78s", must inspect, mixed condition Est. \$100/200	\$60
1223	WWI and WWII Savings Bond Collection Fascinating album filled with all kinds of memorabilia relating to the Liberty Loan savings drives during World War I and the War Savings Bonds drive during World War II, incl. quite a number of mint War Savings stamps, there is a myriad of labels, up to 50 or so in some cases, promoting the buying of bonds, Sew for Victory, U-2 Buy A Bond, Buy War Bonds and Keep Alive the USA, America Needs Your money-Buy U.S. Savings Bonds, certificates of deposit to the Postal Savings System, pocket sleeves with a photo of Gen. MacArthur, state World War Bonus Bonds, Fourth Liberty Loan Committee Report with elaborate Liberty Loan 1918 Committee badge, stick pins, window signs, etc., a most unusual offering, generally fine to very fine Est. \$250/350	\$180	<i>Worldwide</i>		
1224	Souvenir Expositions Silk Handkerchiefs Four embroidered items for expositions incl., Lewis and Clark (2), Jamestown, and Alaska-Yukon Pacific, some soiling but overall nice condition, must be seen, generally fine Est. \$200/300	<i>Web</i> \$150	1231	Baggage Label Dealers Stock 5 plus binders with a couple thousand, retail priced at \$13,869, most are hotel with a few rail and ship, prices run from \$3 to \$15 and most are \$5 to \$7, small amount of duplication, must inspect, fine to very fine appearance, <i>Ex. Connecticut Cinderellas</i> Est. \$1,400/1,600	\$900
1225	U.S. Navy on Sheet Music Dated 1895 to 1919, 33 colorful pieces, 31 are 10x14 inch, 2 are wartime size of 7x10 inch, all featuring U.S. Naval subjects incl. USS Oregon (2 diff.), New York, Connecticut, Rhode Island, Columbia (2 diff.), Raleigh, plus Adm. Dewey and other colorful patriotic art work, displayed in special document preservation album, fine Est. \$180/250	\$120	1232	Airline Baggage Labels 2 banker boxes with over 1000 with shoebox full of Airmail Etiquettes, some duplication, some priced and on sales sheets, many different airlines present, most retail in the \$10 range, huge retail value, must inspect, fine to very fine appearance, <i>Ex. Connecticut Cinderellas</i> Est. \$1,200/1,500	\$800
1226	1965 BEP Book Complete book for the May 10-15 1965 71st Convention of the International Plate Printers, Die Stammers, and Engravers Union of the United States, with BEP cards, advertisement and other engravings, must inspect, fine to very fine Est. \$150/200	\$100	1233	Ephemera Dealers Stock and Hoard 7 boxes with thousands in various formats, noticed Matchbox labels, German cigarette cards, book of Notgeld, Box of Russian/Baltic travel IDs and Documents, 19th Century maps, Third Reich Propaganda cards, 32nd and 36th Olympic photo cards, large engraved plates (mostly from 19th century British magazines), and so much more, must inspect, mixed condition, <i>Ex. Connecticut Cinderellas</i> Est. \$1,200/1,500	\$800
1227	Ellis Island Work Order "Immigrant Station" signed construction voucher work order for \$1000 work dated Aug 9 1900 for work at Ellis Island, opened in 1892 as a Federal immigration station, millions of newly arrived immigrants passed through the station during that time, generally fine, <i>a purpose it served for more than 60 years (closed in 1954)</i> Est. \$150/200	\$100	1234	Space Button, Pins, Patches and Autograph Collection 4 banker boxes fill with hundreds of all different pins mostly Russian, patches mostly U.S. Space Shuttle missions, Space Shuttle buttons of mostly U.S., 46 pictures with autographs of mostly Russian cosmonauts incl., and 2 with U.S. astronauts Neil Armstrong and Edgar Mitchell, must inspect, fine to very fine appearance Est. \$1,000/2,000	\$500
1228	Political Lot About 40 items incl. 1909 post election postcard with note written by sender on his face, Hoover campaign written listing of voters, Harry Truman Large original sketch cartoon by newspaperman, Democratic National Convention ticket from 1956, and stickers and labels, must inspect, mixed condition Est. \$150/200	\$100	1235	Russia 5 Better Military Medals Order of the Red Banner, type 3, Order of the Red Banner of Labor, Order of the Badge of Honor, Order of the Red Star, and Order of the Patriotic War 2nd Class, mostly fine or better, sold "as is" Est. \$250/300	\$150
			1236	Russia Match Book Covers, Beer Labels <i>Web</i> 200+ pieces on pages, early Soviet period, minor dupl., very unusual offering, fine to very fine Est. \$100/150	\$50

End of Second Session